

Submitted To:

**CADMAC Persistence Subcommittee**

**Pacific Gas and Electric  
San Diego Gas & Electric  
Southern California Edison  
Southern California Gas**

**Negative Technical Degradation Factors  
Supplement to Persistence Studies,  
Final Report  
October 18, 1998**

**CADMAC Report #2031P**

Contributors:  
George Peterson, P.E.  
John Proctor, P.E.

**Proctor Engineering Group**  
818 Fifth Avenue, Suite 208  
San Rafael, California 94901  
(415) 455-5700

# TABLE OF CONTENTS

---

<b>TABLE OF CONTENTS</b> .....	<b>i</b>
TABLES .....	ii
FIGURES.....	ii
<b>EXECUTIVE SUMMARY &amp; INTRODUCTION</b> .....	<b>iii</b>
TDF SUMMARY TABLE .....	iv
<b>1. ANALYSIS OF TECHNICAL DEGRADATION</b> .....	<b>1-1</b>
1.1. RESIDENTIAL D/X AIR CONDITIONERS (PERSISTENCE 1 SECTION 2.1).....	1-1
1.1.1. <i>Design Differences</i> .....	1-1
1.1.2. <i>Degradation Curve</i> .....	1-1
1.1.3. <i>Degradation Limit</i> .....	1-2
1.1.4. <i>Degradation Rate</i> .....	1-2
1.1.5. <i>Calculation of Persistence</i> .....	1-3
1.2. RESIDENTIAL REFRIGERATORS (PERSISTENCE 1 SECTION 2.3) .....	1-4
1.2.1. <i>Design Differences and Degradation</i> .....	1-4
1.2.2. <i>Absolute Performance Degradation - Foam Insulation</i> .....	1-4
1.2.3. <i>Degradation Curve</i> .....	1-4
1.2.4. <i>Calculation of Persistence</i> .....	1-5
1.3. PROCESS ADJUSTABLE SPEED DRIVES -- PUMPS (PERSISTENCE 2 SECTION 2.3) .....	1-6
1.3.1. <i>Absolute Performance Degradation</i> .....	1-6
1.3.2. <i>Relative Performance Degradation</i> .....	1-6
1.3.3. <i>Calculation of Persistence</i> .....	1-7
1.4. AGRICULTURAL PUMPS (PERSISTENCE 2 SECTION 2.7) .....	1-8
1.4.1. <i>Design Differences</i> .....	1-8
1.4.2. <i>Degradation Curve</i> .....	1-8
1.4.3. <i>Calculation of Persistence</i> .....	1-9
<b>2. BACKGROUND RESEARCH AND REFERENCES</b> .....	<b>2-10</b>
2.1. RESIDENTIAL AC .....	2-10
2.2. RESIDENTIAL REFRIGERATORS.....	2-11
2.3. PROCESS ADJUSTABLE SPEED DRIVES -- PUMPS.....	2-12
2.4. AG PUMP .....	2-12
2.5. GENERAL.....	2-14

## **Tables**

TABLE ES-1 MEASURES WITH NEGATIVE TDF ESTIMATES	iii
TABLE ES-2 SUMMARY OF TDFS	iv
TABLE 1-1 TDF — RESIDENTIAL DX AC	1-3
TABLE 1-2 TDF — RESIDENTIAL REFRIGERATORS	1-5
TABLE 1-3 TDF — PROCESS ADJUSTABLE SPEED DRIVES -- PUMPS	1-7
TABLE 1-4 TDF — AG PUMP	1-9

## **Figures**

FIGURE 1-1. IMPACT OF CONDENSER AREA ON SYSTEM EFFICIENCY	1-2
FIGURE 1-2. REFRIGERATOR USAGE INCREASE FROM FOAM R DEGRADATION	1-5
FIGURE 1-3 EFFICIENCY DEGRADATION VS. TIME IN SERVICE	1-9

MAILING ADDRESS  
Mary O'Drain, Project Manager  
Pacific Gas & Electric  
123 Mission Street, H28F  
PO Box 770000  
San Francisco, California 94177

# EXECUTIVE SUMMARY & INTRODUCTION

---

The Statewide Measure Performance Studies (*Persistence 1* — PEG 1996 & *Persistence 2* — PEG 1998) were sponsored by the California DSM Measurement Advisory Committee (CADMAC), Persistence Subcommittee to examine the relative technical degradation of demand side management (DSM) measures compared to standard efficiency equipment. In the original studies, existing information was synthesized into an engineering analysis of technical degradation factors (TDFs). The TDFs are yearly multipliers. By applying these multipliers to first year savings, the savings in subsequent years are estimated. Specifically, the TDF is defined as: “A scalar to account for time and use related change in the energy savings of a high efficiency measure or practice relative to a standard efficiency measure or practice.” (CADMAC 12/17/97) By CADMAC directive, negative degradation rates (TDF>1.0) were set equal to one (1.00) in the original studies.

In this supplemental report, the four negative TDFs from the first two studies are estimated. The four technologies covered and references to the original report are given in Table ES-1.

**Table ES-1 Measures with Negative TDF Estimates**

<b>Efficiency Measure</b>	<b>Original Report</b>	<b>Section #</b>
Air Conditioners D/X - Residential	<i>Persistence 1</i>	2.1
Residential Refrigerators	<i>Persistence 1</i>	2.3
Process adjustable speed drives – waste water pumps	<i>Persistence 2</i>	2.3
Agricultural Pumps	<i>Persistence 2</i>	2.7

Air Conditioners D/X - Residential Residential direct expansion air conditioners have larger coil face areas. These were determined to foul at the same rate as conventional equipment. The same level of air-side fouling results in less efficiency degradation for the efficient unit. A TDF was calculated based on the analysis presented in *Persistence 1*.

Residential Refrigerators PEG determined that compressor and fan motor efficiency improvements were the main approaches to higher refrigerator efficiency. These strategies were deemed to result in no absolute technical degradation. Negative relative degradation was found because of cabinet insulation degradation. A TDF was calculated based on the analysis presented in *Persistence 1*.

Process adjustable speed drives – waste water pumps A TDF of one is estimated for this measure based on adjustable speed drives with pumps of diversified time in service ages.

Agricultural Pumps The baseline and efficient measures are the same pump. The abrasive qualities of well water significantly degrade the efficiency of agricultural pumps over time. In the *Persistence 2* report, PEG analyzed a pump test dataset to derive a time in service versus efficiency curve. A TDF was calculated based on this analysis.

---

*Executive Summary*

**TDF Summary Table**

Technical degradation factors (TDFs) were estimated for each measure. These estimates are displayed in Table ES-2.

**Table ES-2 Summary of TDFs**

YEAR	Resid DX AC	Resid Refrig	ASD Process Pumping	Ag Pumps
1*	1.00	1.00	1.00	1.00
2	1.00	1.04	1.00	1.00
3	1.01	1.06	1.00	1.00
4	1.01	1.07	1.00	1.00
5	1.02	1.08	1.00	1.00
6	1.02	1.08	1.00	1.01
7	1.03	1.09	1.00	1.01
8	1.03	1.09	1.00	1.01
9	1.04	1.09	1.00	1.01
10	1.04	1.09	1.00	1.01
11	1.05	1.10	1.00	1.01
12	1.05	1.10	1.00	1.01
13	1.06	1.10	1.00	1.01
14	1.07	1.10	1.00	1.02
15	1.07	1.10	1.00	1.02
16	1.08	1.10	1.00	1.02
17	1.09	1.10	1.00	1.02
18	1.09	1.10	1.00	1.02
19	1.10	1.10	1.00	1.02
20	1.10	1.10	1.00	1.02

\* First year savings are one (1.00) by definition. The TDF modifies the first year savings for subsequent years.

# 1. ANALYSIS OF TECHNICAL DEGRADATION

---

## 1.1. Residential D/X Air Conditioners (*Persistence 1* Section 2.1)

**PEG concludes that energy savings from high efficiency residential air conditioners are unlikely to degrade over time and may actually increase due to a lower degradation rate than standard efficiency designs.** (*Persistence 1*, page 12)

### 1.1.1. Design Differences

From the *Persistence 1* report, PEG determined that the only design difference subject to differential degradation is the condenser face area. Other design differences, such as a scroll compressor, are not expected to experience relative degradation.

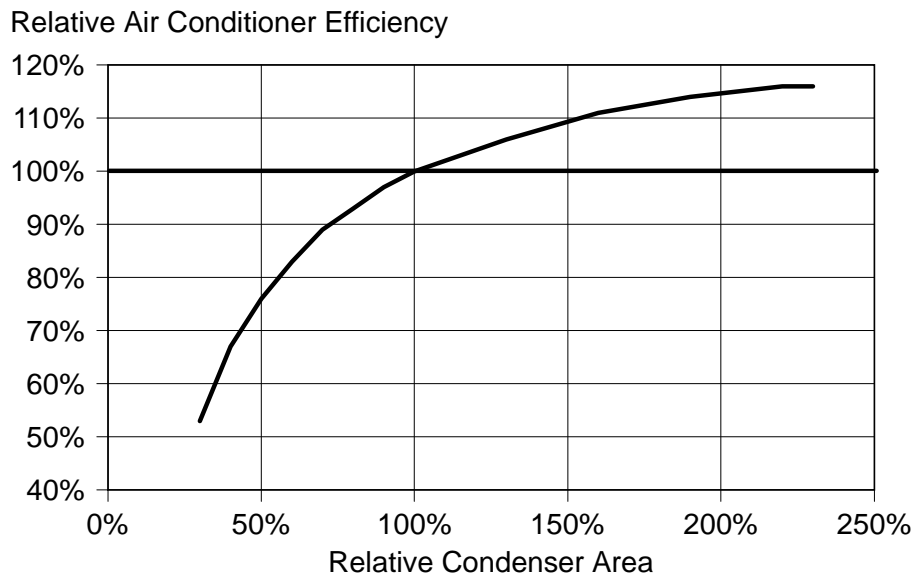
“For residential units, SEER 12 units dominated. The most consistent design modification to achieve high efficiency was a dramatic increase in the condenser face area. This improvement was usually accompanied by slightly increased condenser air flow and reduced fan power. The most popular units coupled this with a scroll compressor. Other units incorporated increased evaporator face area and fins per inch, and used TXV instead of fixed orifice refrigerant metering.” (*Persistence 1*, page 5)

“For condensers in residential systems, the design difference is face area and air flow, not fin geometry or spacing or number of rows. The efficient systems have about twice the face area and 20%-50% greater air flow, leading to 25%-40% lower coil face velocities. There are two reasons why the larger coil units should experience less efficiency degradation than the smaller coil units.” (*Persistence 1*, page 8)

### 1.1.2. Degradation Curve

In the *Persistence 1* report, PEG determined a condenser face area versus EER curve. Because the curve gets flatter at larger face areas, an equal loss in face area affects standard equipment more than high efficiency equipment, Figure 1, (Figure 1, page 9 *Persistence 1*).

“Second, even if the two condensers experienced the same relative reduction in effective surface area and heat rejection capacity, the impact on system efficiency would be smaller for the larger coil. This smaller impact is due to the non-linear relationship between condenser heat transfer capacity and system efficiency. Figure 1 shows the relationship between condenser face area and normalized efficiency (based on air conditioner simulations performed by PEG using the Oak Ridge National Laboratory PUREZ model).” (*Persistence 1*, page 8)



**Figure 1-1. Impact of Condenser Area on System Efficiency**

“The condenser area and efficiency are both normalized in the figure (i.e., expressed as percentages relative to a baseline system). The figure shows that a 60% increase in the effective heat exchange area of the baseline unit improves efficiency by about 11%. A 120% increase in area only improves efficiency by about 5% more. The nature of this relationship has important implications for assessing fouling impacts because fouling may be viewed as a decrease in effective heat exchange area.”  
(*Persistence 1*, page 9)

### 1.1.3. Degradation Limit

PEG estimates that the maximum degradation is 45% condenser face surface loss, resulting in a +10°F condensing temperature increase, and 20% EER decrease in the standard unit. This estimate is based on Jung (1976).

“Likewise, a change in the heat-transfer coefficient because of a dirty condenser is expected to increase the condensing temperature ~ 10°F. If there is airflow blockage, the temperature could rise higher. These estimated temperature limits do not represent the worst possible case but reasonable expected limits because of reduced airflow or heat transfer. Long before the maximum limits are reached and especially during hot weather, the occupants should be complaining about inadequate cooling, or the unit may have malfunctioned.” (Jung, 1976, page 20).

### 1.1.4. Degradation Rate

PEG estimates that the maximum degradation rate is 6.8%/year condenser face surface loss based on Trane (1990) and Braum (1986). Under conditions of accelerated fouling for a multi-row coil, Trane found a 27% efficiency loss. This efficiency loss corresponds to a 54% relative condenser area loss, Figure 1. Since this accelerated fouling is equivalent to 8 years of typical operating conditions, yearly fouling would be 6.8% for commercial coils.

---

## Analysis

“Trane provided data from an experiment performed in the 1970’s where two air conditioners were operated continuously with condensers exposed to a very dirty factory environment for 18 months, equal to perhaps 4-8 years worth of typical operating hours (Trane 1990). Performance measurements at the end of the test indicated that the air conditioner with the standard plate fin coil had lost 17% of its capacity and 27% of its efficiency.” (Persistence 1, 1996)

“An ASHRAE paper noted considerable capacity problems in two 20 ton chillers caused by dirty condensers (Braun 1986). The static pressure across the coils was measured at 2.5 times greater than design after 8 years. Cleaning was not very effective at improving capacity or reducing pressure drop. The author noted that it is extremely difficult to clean a coil more than two rows deep and that coils with tighter fin spacing will tend to foul more quickly.”

This maximum estimate is for commercial multi-row condenser coils. Jung (1976) states that single row condenser coils are less subject to clogging than multi-row coils.

“Single-layered condenser coils, although not filtered, are not prone to get dirty if properly installed. Multilayer condenser coils are more likely to clog because of debris becoming trapped between the coils.” (Jung, 1976).

PEG estimates a diversified degradation rate of 2.5%/year condenser face surface loss for single row residential units, 0.37 of the typical commercial multi-row coils. This estimate is conservative; a higher fouling rate would favor the high efficiency units more. The maximum predicted fouling is not achieved in the estimated 15 year life of the equipment.

### 1.1.5. Calculation of Persistence

Based on engineering estimates of the impact of condenser area on system efficiency, maximum fouling, and fouling rate; the TDF was calculated, Table 1-1.

**Table 1-1 TDF — Residential DX AC**

YEAR	TDF	YEAR	TDF
1*	1.00	11	1.05
2	1.00	12	1.05
3	1.01	13	1.06
4	1.01	14	1.07
5	1.02	15	1.07
6	1.02	16	1.08
7	1.03	17	1.09
8	1.03	18	1.09
9	1.04	19	1.10
10	1.04	20	1.10

\* First year savings are one (1.00) by definition. The TDF modifies the first year savings for subsequent years.



## **1.2 Residential Refrigerators (Persistence 1 Section 2.3)**

**PEG concludes that the energy savings from high efficiency refrigerators will not degrade over time and may actually increase.** (*Persistence 1*, page 22)

### **1.2.1. Design Differences and Degradation**

In the *Persistence 1* report, PEG determined that compressor efficiency improvements were the main approach manufacturers used to boost refrigerator efficiency. Based on an analysis of potential compressor degradation mechanisms and research findings, PEG concluded that there is no evidence to suggest that higher efficiency refrigerator compressors should experience any greater performance degradation than standard compressors..

PEG determined that the second most common efficiency increase mechanism is the use of higher efficiency evaporator and condenser fan motors (if used), and that higher efficiency motors are unlikely to suffer from relative degradation.

Other potential design differences were also considered. Overall, the analysis of design differences between the standard and high efficiency units indicated that there should be no relative performance degradation in any of the higher efficiency components.

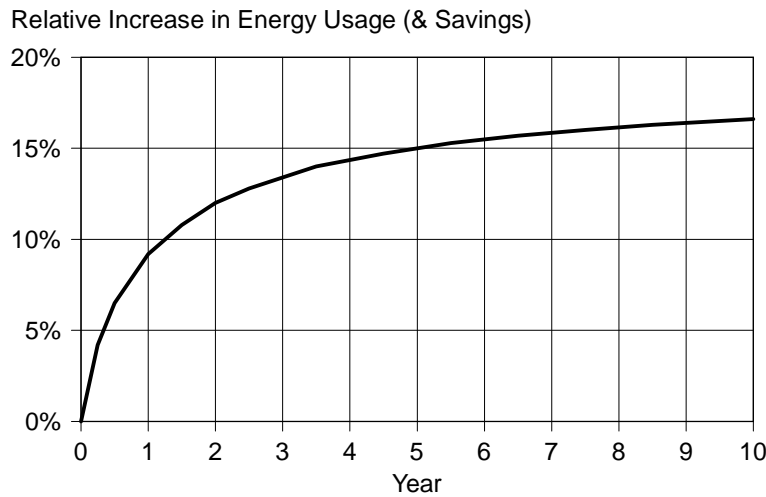
### **1.2.2. Absolute Performance Degradation - Foam Insulation**

PEG analyzed the potential impact of insulation R-value degradation on refrigerator energy usage. It is well known that urethane foam R-value degrades over time due to outgassing of the blowing agent and, more importantly, air components diffusing into the foam. This degradation may reduce the R-value per inch from an initial value of about 7 or 8 (hr·ft<sup>2</sup>·°F/Btu) down to a fully aged value of 5 or 6. To assess the impact of this R-value degradation on the energy savings from the high efficiency unit, PEG performed additional simulations which confirmed that the relative usage impacts of R-value changes are essentially independent of the compressor and motor efficiency.

The increased cabinet loads over time should lead to increased savings (“negative” relative degradation) from the high efficiency units due to their more efficient compressors and motors. The insulation and case of the standard and efficient refrigerator are the same. Both standard and efficient models will experience the same 10% load increase due to the case insulation R-value degradation. However, the standard model will have a larger absolute electrical usage increase due to its using more energy per unit of cooling load. Therefore, absolute energy savings from the high efficiency refrigerator will increase over time as its electrical usage levels increase more slowly than those of the standard unit.

### **1.2.3. Degradation Curve**

The impact of these R-value changes on refrigerator usage was modeled using the EPA’s refrigerator simulation software (EPA 1993). In *Persistence 1*, typical 1993 18 cubic foot top freezer model data were used as a baseline and then a series of simulations were run adjusting the foam R-value incrementally. The results of these runs were fit with a regression model relating foam R-value to energy usage. Energy use impacts by year were calculated by using the R-value degradation function with these simulation results. The resulting performance degradation curve is shown in Figure 2 (Figure 4, page 20 *Persistence 1*).



**Figure 1-2. Refrigerator Usage Increase from Foam R Degradation**

“If initial savings were measured based on data from the entire first year (which includes a significant fraction of initial degradation), the analysis indicates that savings will be understated by about 4% for the second year, 6% for the third year, and eventually reach a 10% underestimate by year 14. All of these values are based on the assumed R-value degradation rates and the assumption that no other factors are changing over time.” (*Persistence 1*, page 20-21)

### 1.2.4. Calculation of Persistence

The calculated foam R-value degradation curve was used to estimate the TDFs, Table 1-2.

**Table 1-2 TDF — Residential Refrigerators**

YEAR	TDF	YEAR	TDF
1*	1.00	11	1.10
2	1.04	12	1.10
3	1.06	13	1.10
4	1.07	14	1.10
5	1.08	15	1.10
6	1.08	16	1.10
7	1.09	17	1.10
8	1.09	18	1.10
9	1.09	19	1.10
10	1.09	20	1.10

\* First year savings are one (1.00) by definition. The TDF modifies the first year savings for subsequent years.

### **1.3. Process Adjustable Speed Drives -- Pumps (Persistence 2 Section 2.3)**

**PEG concludes that savings from Adjustable Speed Drives (ASDs) are unlikely to degrade over time due to changes in measure performance. PEG concludes that savings from ASDs are likely to improve over time due to changes in pump efficiency.**  
(Persistence 2, page 2-10)

#### **1.3.1. Absolute Performance Degradation**

The energy usage of pumping application depends the characteristics of both the prime mover (electric motor and potentially ASD) and the pump.

In *Persistence 1&2*, PEG concluded that the electric motor and ASD were unlikely to experience technical performance degradation.

An ASD runs a pump slower under conditions of lower load. At slower speeds many of the wear characteristics are reduced. Pump wear increases clearances and reduces pump efficiency. By slowing pump wear, the ASD will maintain the pump efficiency longer than a conventional constant speed drive.

#### **1.3.2. Relative Performance Degradation**

Wastewater pumps loose efficiency over their service life due to wear of their internal surface, similar to agricultural pumps. If the pump life is less than the ASD measure life, a negative degradation will result. However, unlike the agricultural pumps which were at known points in the process of wearout and replacement, the wastewater pump could be anywhere in its time-in-service life. If the constant speed and ASD controlled pumps are replaced at exactly the same efficiency, no diversified relative degradation would result due to changes in pump wear. The pump operated by the ASD loses efficiency slower, but is also replaced less often and over time the average efficiencies are equal.

### 1.3.3. Calculation of Persistence

PEG recommends a TDF of one (1.00) for all years for the ASD process pumping applications, Table 1-3.

**Table 1-3 TDF — Process Adjustable Speed Drives -- Pumps**

YEAR	TDF	YEAR	TDF
1*	1.00	11	1.00
2	1.00	12	1.00
3	1.00	13	1.00
4	1.00	14	1.00
5	1.00	15	1.00
6	1.00	16	1.00
7	1.00	17	1.00
8	1.00	18	1.00
9	1.00	19	1.00
10	1.00	20	1.00

\* First year savings are one (1.00) by definition. The TDF modifies the first year savings for subsequent years.

## 1.4. Agricultural Pumps (*Persistence 2* Section 2.7)

**PEG concludes that abrasive qualities of well water significantly degrade the efficiency of agricultural pumps over time.** (*Persistence 2*, page 2-34)

PG&E and SCE have provided agricultural customers with pump testing service for many years. To determine an efficiency versus time in service curve, a number of pumps must have known efficiencies at a minimum of two points in their time in service. Pumps tested more than once in PG&E's Ag. Pump MDSS database were analyzed to develop an estimate of the efficiency versus time in service. This analysis within *Persistence 2* lead to the following conclusion:

**PEG concludes that energy savings from replacement of the bowl and impeller on agricultural deep well turbine pumps is unlikely to degrade over time and may increase.** (*Persistence 2*, page 2-36)

### 1.4.1. Design Differences

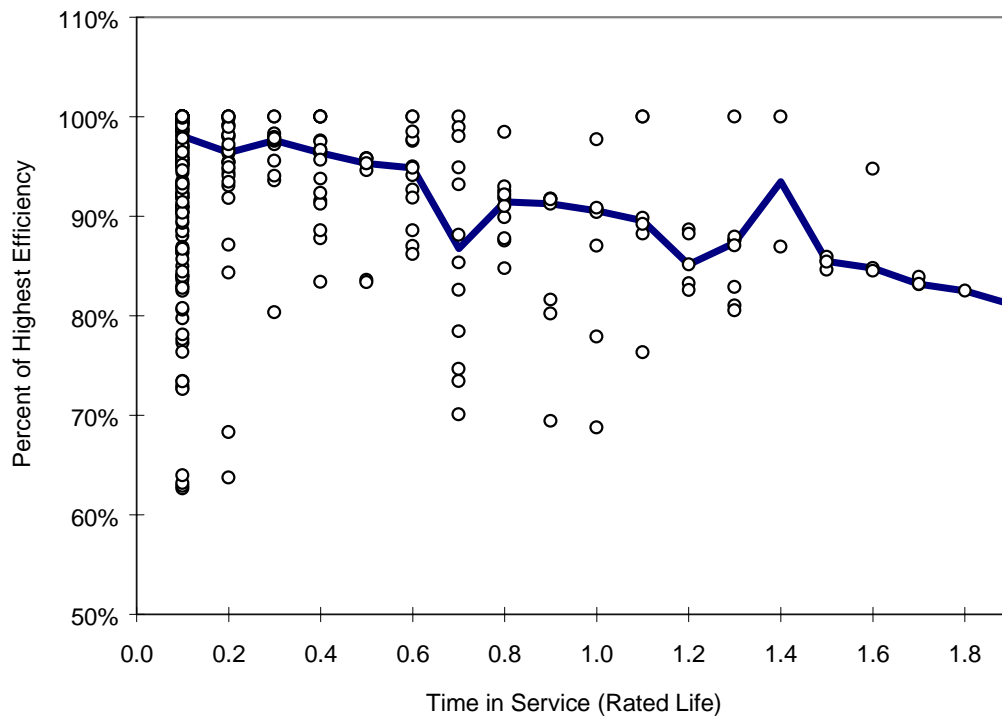
In the *Persistence 2* report, PEG determined that the baseline and efficient measures are the same pump at different points of the time in service versus efficiency curve. The baseline measure is a standard vertical turbine agricultural pump that has worn and is operating at lowered efficiency. The efficient measure is an agricultural pump retrofitted with a new impeller and bowl assembly.

### 1.4.2. Degradation Curve

Replacement of an agricultural pump will result in immediate energy savings due to the improved efficiency of the new bowl and impeller over the old worn bowl and impeller. The lifetime of the measure is determined by when the worn pump would have been replaced without the intervention of the program.

Calculation Methodology The calculation methodology was documented in *Persistence 2*. The resulting curve is presented in Figure 1-3 (Figure 2-6 in *Persistence 2*).

"Pacific Gas and Electric Company's pump test database was cleaned and sorted. One hundred and sixty pumps were identified that were tested at the beginning of their times in service and at other times over their service life. The average initial efficiency was 61.7%. The data are consistent with a linear decay curve for each pump. The overall results can be modeled by a daily linear efficiency decay of .0000328 times the maximum measured pump efficiency. The confidence interval on the decay estimate was  $\pm .0000097$  at 95%. Figures 2-6 and 2-7 show the efficiency decay as a function of the fraction of service life (where service life is estimated to end at 90% of the maximum tested efficiency) based on efficiency at most recent test." (*Persistence 2*, page 2-34)



## 2. BACKGROUND RESEARCH AND REFERENCES

---

### 2.1. Residential AC

- Beseler, Frederick, 1987. " *Scroll Compressor Technology Comes of Age,*" Heating/Piping/ Air Conditioning, Jul/87, pp. 67-70.
- Blasnik, Michael, J. Proctor, T. Downey, J. Sundal, and G. Peterson, 1995. *Assessment of HVAC Installations in New Homes in Southern California Edison's Service Territory*, Proctor Engineering Group.
- Braun, R.H., 1986. " *Problem and Solution to Plugging of a Finned-Tube Cooling Coil in an Air Handler*" , ASHRAE Transactions Vol. 92. Pt. 1 pp.385-398.
- Farzad, M. and D.L. O'Neal, 1993. " *Influence of the Expansion Device on Air-Conditioner System Performance Characteristics Under a Range of Charging Conditions,*" ASHRAE Transactions Vol. 99. Pt. 1.
- Hewett, Martha J., D.L. Bohac, R.W. Landry, T.S. Dunsworth, S.L. Englander, and G.A. Peterson, 1992. " *Measured Energy and Demand Impacts of Efficiency Tune-Ups for Small Commercial Cooling Systems,*" in proceedings of ACEEE 1992 Summer Study on Energy Efficiency in Buildings Vol. 3 pp. 3.131 - 3.145.
- Jung, L., 1987. *Impact of Air-Filter Condition on HVAC Equipment*, Oak Ridge National Laboratory, rpt. ORNL-TM-9894.
- Karger, Henry and C.L. Carpenter, 1978. " *An Analysis of Failure Patterns of 531 Residential Air-Conditioning Units,*" ASHRAE Transactions Vol. 84. Pt. 2 pp. 462-474.
- Krafthefer, B., and U. Bonne, 1986. " *Energy Use Implications of Methods for Maintaining Heat Exchanger Coil Cleanliness*" , ASHRAE Transactions Vol. 92. Pt. 1 pp. 420-431.
- Krafthefer, B. C., D.R. Rask, and U. Bonne, 1987. " *Air Conditioning and Heat Pump Operating Cost Savings by Maintaining Coil Cleanliness,*" ASHRAE Transactions Vol. 93 Pt. 1 pp. 1458-1473.
- Neal, Leon, 1992. *Field Experiences with Central Air Conditioners*, North Carolina Alternative Energy Corporation.
- Palani, Manivannan, D. O'Neal and J. Haberl, 1992. " *The Effect of Reduced Evaporator Air Flow on the Performance of a Residential Central Air Conditioner,*" in proceedings of Symposium on Improving Building Systems in Hot & Humid Climates, Dallas TX.
- Proctor Engineering Group. 1996. *Statewide Measure Performance Study: An Assessment of Relative Technical Degradation Rates (Persistence 1)*. San Rafael, CA: Proctor Engineering Group.
- Proctor, John, B. Davids, F. Jablonski, and G. Peterson, 1990. *Pacific Gas and Electric Heat Pump Efficiency and Super Weatherization Pilot Project Final Report*, Proctor Engineering Group.

---

## References

- Proctor, John, 1991. *Pacific Gas and Electric Appliance Doctor Project Final Report*, Proctor Engineering Group.
- Proctor, John, M. Blasnik, and T. Downey, 1995. *Southern California Edison Coachella Valley Duct and HVAC Retrofit Efficiency Improvement Pilot Project*, Proctor Engineering Group.
- Schwed, Robert L., 1992. "Keep It Clean: Coil Cleaning Tips From a Pro," Air Conditioning, Heating and Refrigeration News, Aug. 3, 1992, pp. 12-13.
- Trane, 1976. *Cooling Performance Testing on a Common Eight Year Old Residential Air Conditioning Unit*, LaCross, WI, May 24, 1976. cited in Farzad, M. and D.L. O'Neal, "An Evaluation of Improper Refrigerant Charge on the Performance of a Split System Air Conditioner with Capillary Tube Expansion," Energy Systems Laboratory, Texas A&M, July 1988.
- Trane, 1990. *Spine Fin™: The Technology of Heat Transfer*, The Trane Company, American Standard Inc. pub #14-4900-1.
- ### 2.2. Residential Refrigerators
- AHAM, 1994. "1994 Directory of Certified Refrigerators and Freezers," Association of Home Appliance Manufacturers, Edition 2 - June 1994.
- EPA, 1993. *EPA Refrigerator Analysis Program (ERA): User's Manual*, U.S. EPA Global Change Division, Office of Atmospheric Programs.
- Glicksman, L.R. and M. Page, 1992. "Long-Term Performance of Closed-Cell Foam Insulation," in proceedings of Thermal Performance of the Exterior Envelopes of Buildings V, pp. 81-90, ASHRAE.
- Meier, A (editor), 1993. "Special Refrigerator Section," Home Energy Magazine, Vol. 10 No.1, pp. 16-41.
- Middleton, Marc G., and R.S. Sauber, 1983. *Research and Development of Energy-Efficient Appliance Motor Compressors, Volume IV -- Production Demonstration and Field Test*, Oak Ridge National Laboratory rpt. ORNL/Sub/78-7229/4.
- Parker, Danny S. and T.C. Stedman, 1992. "Measured Electricity Savings of Refrigerator Replacement: Case Study and Analysis," in proceedings of ACEEE 1992 Summer Study on Energy Efficiency in Buildings Vol. 3 pp. 3.199 - 3.210.
- Proctor Engineering Group. 1996. *Statewide Measure Performance Study: An Assessment of Relative Technical Degradation Rates (Persistence 1)*. San Rafael, CA: Proctor Engineering Group.
- Proctor, John and G. Dutt, 1994. *Pacific Gas and Electric Residential Refrigerator Field Monitoring*, Proctor Engineering Group.
- Sherman, Max H., and D.T. Grimsrud, 1980. *Measurement of Infiltration Using Fan Pressurization and Weather Data*, Lawrence Berkeley Laboratory rpt. LBL-10852, Berkeley, CA.
- Vineyard, E.A., 1991. "The Alternative Refrigerant Dilemma for Refrigerator-Freezers: Truth or Consequences," ASHRAE Transactions Vol. 97 Pt. 2 pp.955-960.



---

## References

### 2.3. Process Adjustable Speed Drives -- Pumps

- Belmans, R., P. Meulemans, D. Saenen, and W. Geysen. "A 3MW A.C. Adjustable Speed Pump Drive for a Boiler Feed Pump-Analysis of the Possible Solutions and Economics of its Applications." *Journal of Electrical and Electronics Engineering, Australia*, Vol 11, No. 1, March 1991. pages 6-12.
- Haberl, J.S., D.E. Claridge, T. Heneghan, R. Sieggreen, and J. Sims, 1995. *An Evaluation of Energy Saving Retrofits from the Texas LoanSTAR Program*, Energy Systems Laboratory, Texas Engineering Experiment Station, Texas A&M University, unpublished 3rd draft.
- Lisk, Ian. "Three Arkansas Wastewater Plants Find Adjustable Speed Drives Improve Process Performance" *Chemical Online*, 2/2/97
- O'Keefe, William. "The Month's Problem: Should we specify lower speeds for centrifugal pumps?" *Power*, September, 1991.
- Peterson, G. and J. Proctor. 1998. *Statewide Measure Performance Study #2: An Assessment of Relative Technical Degradation Rates*. San Rafael, CA: Proctor Engineering Group.
- Waterbury, Robert C. 1995. "Adjustable Speed Drive Offers Pump Flexibility" *Pumps and Systems*.
- Williams, D.J. 1996. "Energy considerations in the selection of centrifugal pumps for use in the waste water industry." *Proceedings of Energy Saving in the Design and Operation of Pumps*. p 1-22. Conference London (United Kingdom), 7 Mar 1996. London, United Kingdom: Mechanical Engineering Publications.

### 2.4. Ag Pump

- Addie, Graeme R.; Pagalthivarathi, Krishnan V.; Visintainer, Robert J. 1996. "Centrifugal slurry pump wear, technology and field experience." *Proceeding of the 1996 ASME Fluids Engineering Division Summer Meeting, Part 1* (of 2) FED vol. 236 p 703-715. New York, NY: American Society of Mechanical Engineers, Fluids Engineering.
- Ahmad, K.; Baker, R.C.; Goulas, A. 1986. "Computation and experimental results of wear in a slurry pump impeller." *Proceedings of the Institution of Mechanical Engineers, Part C: Vol 200* p 439-445. United Kingdom: Mech. Eng. Sc.
- Bouma, Kent G., ACT2 Agricultural Irrigation Pumping Demo, Pacific Gas and Electric Company. *Proceedings of the 1994 ACEEE Summer Study*. Washington, DC: ACEEE.
- Clark, Hector McL., 1993. "Test Methods and Applications for Slurry Erosion – A Review," in *Tribology: Wear Test Selection for Design and Application*, ASTM STP 1199, A.W. Ruff, and Raymond G. Bayer, Eds. Philadelphia, PA: American Society for Testing and Materials.
- DeVore, Steve. 1997. American Turbine, personal communication.
- Engeda, A. 1995. "Correlation and prediction of efficiency of centrifugal pumps due to tip clearance effects." *Proceedings of the Institution of Mechanical Engineers, Part A: Journal of Power and Energy* Vol 209 n 2 p 111-114

---

## References

- Florida Energy Extension Service and Helen H. Whiffen. "Energy Use in Irrigation" *Energy Efficiency & Environmental News*. Florida Cooperative Extension Service, Institute of Food and Agricultural Sciences, University of Florida, November 1991.
- Haman, Dorota Z., Forrest T. Izuno, and Allen G. Smajstrla. *Pumps for Florida Irrigation and Drainage Systems*. Circular 832, Florida Cooperative Extension Service, Institute of Food and Agricultural Sciences, University of Florida, 1989, revised January 1994.
- Ingersoll-Rand Research, Inc. 1983. . *Centrifugal Slurry Pump Wear and Hydraulic Studies: Phase 1 Report: Pilot-Plant Experience and Literature Search*. Department of Energy Report Number: DOE/PC/50035-1 Princeton, NJ: Ingersoll-Rand Research, Inc.
- Marscher, WD. 1987. "The Relationship between Pump Rotor System Tribology and Appropriate Vibration Specifications for Centrifugal Pumps." *Proceedings of the Institution of Mechanical Engineers Third European Congress, Fluid Machinery for the Oil, Petrochemical and Related Industries*. p 157-167 London, England: Institution of Mechanical Engineers.
- Mistry, D.; Cooper, P.; Biswas, C.; Sloteman, D.; Onuschak, A.. 1983. *Centrifugal slurry pump wear and hydraulic studies Phase II Report: Experimental studies*. Department of Energy Report Number: DOE/PC/50035-T1 Princeton, NJ: Ingersoll-Rand Research, Inc.
- O'Keefe, William, "Look at improved help for damage to pump interior surfaces." *Power* February, 1993
- Pagalthivarthi, K.V. and F.W. Helmly. 1992. "Applications of Materials Wear Testing to Solids Transport via Centrifugal Slurry Pumps." *Wear Testing of Advanced Materials, ASTM STP 1167*, Ramesh Divakar and Peter J. Blau, Eds. Philadelphia, PA: American Society for Testing and Materials.
- PG&E. 1995. PG&E Advice Filing 1867-G-A/1481-E-A, January 1995. San Francisco, CA: Pacific Gas and Electric Company.
- PG&E. 1995. PG&E Advice Filing 1867-G/1481-E, October 1995. San Francisco, CA: Pacific Gas and Electric Company.
- PG&E. March 1, 1997. *Impact Evaluation of PG&E's 1995 Agricultural EEI Programs: Pumping and Related End Use, Indoor Lighting End Use*. PG&E Study ID# 329 & 331. Prepared by Quantum Consulting Inc. San Francisco, CA: Pacific Gas and Electric Company.
- PG&E. 1998. [http://www.pge.com/customer\\_services/business/energy/pumptest.html](http://www.pge.com/customer_services/business/energy/pumptest.html).
- Peterson, G. and J. Proctor. 1998. *Statewide Measure Performance Study #2: An Assessment of Relative Technical Degradation Rates*. San Rafael, CA: Proctor Engineering Group.
- Rayan, M.A., and N. Gadelhak. 1985. "An Experimental Study of the Erosion in Dredge Pumps" *FED-Vol 26*. Presented at the 1985 ASME Winter Meeting at Miami, FL. Conf-851125, pages 17-20. New York, NY: American Society of Mechanical Engineers.
- SCE. 1994. *Pumping Productivity*. Southern California Edison
- Smajstrla, A.G.; D.S. Harrison; and J.C. Good. undated. *Performance of Irrigation Pumping Systems in Florida*. Circular #653 Gainesville, FL: Florida Cooperative Extension Service, Institute of Food and Agricultural Sciences, University of Florida.

---

## References

- Solomon, Kenneth H. and David F. Zoldoske. 1994. *"Field Determination of Agricultural Pumping Plant Electric Motor Efficiencies."* Fresno, CA: Center for Irrigation Technology, California State University, Fresno.
- Tucker, Robert C. Jr. 1986. "Coatings for Centrifugal Pump Components." Proceedings of the Third International Pump Symposium, Houston, TX. p 107-110 College Station, TX: Texas A&M Univ.
- Walker, C.I.; P.J. Wells; G.C. Bodkin. 1994. "The Effect of Flow Rate and Solid Particle Size on the Wear of Slurry Pumps" *FED-Vol 189, Liquid-Solid Flows*. Presented at the 1994 ASME Fluids Engineering Division Summer Meeting at Lake Tahoe, Nevada. Conf-94.659, pages 189-195. Fairfield, NJ: American Society of Mechanical Engineers.
- Wiedenroth, W. 1984. "An Experimental Study of Wear of Centrifugal Pumps and Pipeline Components." *Journal of Pipelines, Vol 4 n 3 May 1984* p 223-228.
- Wiedenroth, W.; Rayan, M.A.; Gadelhak, N. 1987. "Friction power approach for the evaluation of wear in centrifugal slurry pumps." *Cavitation and multiphase flow forum - 1987 Series ASME applied mechanics, bioengineering and fluid engineering conference* 14 June 1987 FED-Vol. 50 Houston, TX: Industrial Presentations Inc.
- Williams, Paul. 1998. Personal communication. Southern California Edison

## 2.5. General

- CADMAC. September 21, 1993. *DSM Measure Effective Useful Life Project, Master Tables of Measure Life Estimates and Final Report*. Sacramento, CA: California Public Utilities Commission.
- CADMAC. 1996. *Protocols and Procedures for the Verification of Costs, Benefits, and Shareholder Earnings from Demand-Side Management Programs*. Sacramento, CA: California Public Utilities Commission.
- CADMAC. December 17, 1997. *Proposed Revisions to Protocol Tables 8, 9, & 10: By Persistence Subcommittee*. Sacramento, CA: California Public Utilities Commission.
- (PEG 1996 *Persistence 1*) Proctor Engineering Group, Energy Investment, Inc., Texas A&M University Energy Systems Laboratory, and VaCom Technologies. 4/24/1996. *Statewide Measure Performance Study, Final Report: An Assessment of Relative Technical Degradation Rates*. CADMAC Report #2023P San Francisco, CA: Persistence Subcommittee, California DSM Measurement Advisory Committee.
- (PEG 1998 *Persistence 2*) Peterson, G. and J. Proctor. 5/14/1998. *Statewide Measure Performance Study #2: An Assessment of Relative Technical Degradation Rates, Final Report*. CADMAC Report #2027P San Francisco, CA: Persistence Subcommittee, California DSM Measurement Advisory Committee