



**Pacific Gas and
Electric Company®**

Pacific Gas and Electric Company
Energy Efficiency Program

**Update of California Weather Files for Use in
Utility Energy Efficiency Programs and
Building Energy Standard Compliance Calculations**

Publication Date	March 6, 2020
Prepared by	Joe Huang White Box Technologies 346 Rheem Blvd., Suite 205A Moraga CA 94556
Technical Editor	Kati Pech Pacific Gas and Electric Company San Francisco, California
Project Managers	Brian Arthur Smith Pacific Gas and Electric Company San Francisco, California Richard S. Ridge Ridge and Associates San Rafael, California

LEGAL NOTICE

This report was prepared by Pacific Gas and Electric Company in collaboration with the California Public Utilities Commission, the California Energy Commission, Southern California Edison Company, San Diego Gas & Electric, and Southern California Gas Company. None of these entities nor any of its employees and agents:

- (1) make any written or oral warranty, expressed or implied, including, but not limited to those concerning merchantability or fitness for a particular purpose;
- (2) assume any legal liability or responsibility for the accuracy, completeness, or usefulness of any information, apparatus, product, process, method, or policy contained herein; or represent that its use would not infringe any privately-owned rights, including, but not limited to, patents, trademarks, or copyrights.

Table of Contents

0.0	Executive Summary	3
1.0	PROJECT BACKGROUND	3
2.0	PROJECT OBJECTIVES	4
3.0	DATA	4
4.0	PROCESSING THE RAW DATA	8
5.0	PROGRAMS AND PROCEDURES	16
6.0	WEATHER FILE NAMES	21
7.0	WEATHER FILE FORMATS	21
8.0	SELECTION OF CALIFORNIA LOCATIONS	22
9.0	PRODUCTION OF CZ2018 AND CALEE2018 WEATHER FILES	26
10.0	RESULTS	32
11.0	CONCLUSIONS	41
12.0	RECOMMENDATIONS	41
13.0	REFERENCES	42
A.1	DESCRIPTION OF THE WEATHER FILES IN CSV FORMAT	44

Executive Summary

Accurate and up-to-date weather data is an essential component of building energy efficiency programs. It allows for an objective assessment of energy savings from Energy Efficiency projects carried out by the utilities and provides a firm technical basis for setting building energy efficiency goals for building energy standards and for verifying compliance to the building energy standards.

For nearly a decade, the California Energy Commission (CEC) and the Investor-owned Utilities (IOUs) have relied on the CZ2010 standard weather files for compliance calculations and normalizing energy savings from utility energy programs. The increased public awareness that climate is an ever-changing dynamic system, coupled with perceptions that California has been getting hotter in recent years, has spurred attention on updating the CZ2010 weather files to correspond closer to current weather conditions.

The objectives of this project are to update the CZ2010 weather files with the most recent weather data resources, including newly available satellite-derived solar radiation, and develop two customized versions of “typical year” weather files. One version will be delivered to the CEC for use in developing the next version of the Title-24 Standards and compliance calculations required by Title-24. The other version will be used by PG&E and other IOUs to support their Energy Efficiency programs, including their use in building energy simulations and spreadsheet calculations to determine energy savings from program activities and for normalizing that savings for weather variability. This project will also provide IOU consultants and contractors with historical weather files over the last five years for the same California locations to be covered by the “typical year” weather files. Such weather data are indispensable for engineering assessment of actual building performance.

1. PROJECT BACKGROUND

Detailed and reliable weather data are critical to the California Energy Commission (CEC) for the maintenance and enforcement of the Title 24 building standards and to the California Public Utilities Commission (CPUC) in the assessment of Energy Efficiency (EE) programs being undertaken by the Investor-Owned Utilities (IOUs), although the needs of the two institutions are somewhat different. The CEC needs a benchmark set of “typical year” weather files to rationalize the energy efficiency level of the prescriptive option, which in turn establishes an energy budget for the performance option that a building cannot exceed based on computer simulations done with the benchmark weather files. Although there has been increased concern about future climate change, to date “typical year” weather files are still constructed to replicate the most typical weather conditions of a past period of record, which was originally 30 years but is now as short as 12 years to reflect more recent weather conditions. For almost 30 years, starting from when Title-24 was first enacted in 1982, the CEC used the same set of 16 CTZ (California Thermal Zone) weather files that were created by Crow (1983), and revised using the same data by Augustin (1991). The revised set has been called the CTZXXRV2, where XX refers to the CTZ Climate Zone number.

A set of “typical year” weather files to replace the CTZXXRV2 files was finally created by White Box Technologies (WBT) for the CEC in 2010. These are the CZ2010 weather files (Huang 2010), which will be in use until 2023 when they in turn will be replaced by a set of weather files developed by the current project. Taking advantage of the increased availability of raw weather data from NOAA’s Integrated Surface Database (ISD, Lott and Baldwin 2001), as well as commercial satellite-derived solar radiation (CPR 2019), WBT was able to create CZ2010 files for 86 California locations extracted from 12 years of data from 1998 through 2009. Since the CEC had adopted the use of TDVs (Time Dependent Valuations) as a metric for fuel prices, the CEC requested that the same “typical months” be used for all 86 locations, because TDVs are dependent on utility district-wide demand, that in turn are dependent on state-wide weather conditions,

The CPUC and IOUs need “typical year” weather data to control for interannual weather variations when estimating savings for their energy efficiency programs in a two-step procedure. First, each EE program participant uses the historical data from the most appropriate weather station so that the relationship between weather or temperature and energy use can be more accurately estimated. Additionally, to estimate weather-normalized savings for these EE programs, for the past eight years the IOUs have relied on the CZ2010 weather files. However, the use of the CZ2010s to weather-normalize savings is increasingly suboptimal since (1) the CZ2010s do not reflect the typical weather unique to each weather station but, as noted above, are based on the same typical months for all 86 locations, and (2) the CZ2010s are based on weather conditions from 1998-2009, but California has experienced substantially warmer summers in the eight years from 2010 through 2017.

Both the CEC and the IOUs recognize that temperatures over the last ten years have been among the hottest on record and are expected to increase, and they have agreed that the CZ2010s need to be updated so that it can take these hotter temperatures into account for both the CEC’s development of the next version of Title-24 and the CPUC’s and IOU’s estimations of weather-normalized energy savings and building performance. In recognition of CEC’s needs for supporting Title-24, this project has agreed to create this updated version of CZ2018¹ weather files in accordance to the Commission’s preferences for using state-wide “typical months” and extending the period of record from 12 to 20 years (1998-2017). At the same time, for the IOUs, this represents an opportunity to create an alternate set of CALEE2018 “typical year” weather files based on typical months unique to each location and keep the 12 year time period (2006-2017) as used in the CZ2010s, thus improving the accuracy of their estimates of weather-normalized savings over the next few years. This project report presents the research objectives of the CEC and the IOUs and describes the methods and activities that have been carried out to achieve these objectives.

2. PROJECT OBJECTIVES

There are two sets of research objectives, one to satisfy the needs of stakeholders (e.g., the CPUC, IOUs, and ratepayers) in the evaluation of EE programs in California and one to satisfy the needs of the CEC.

The research objectives for Energy Efficiency stakeholders are:

1. Update the CZ2010 reference files for each of the 86 Integrated Surface Database (ISD) weather stations in California, plus 31 new additions, based on the most recent 12 calendar years of data for each station (2006-2017). For convenience, these updated weather files for EE Evaluation will be referred in this report as the CALEE2018 reference weather files.
2. Provide historical weather files of the last 5 years (2014-2018) for the same 117 weather stations as above.

The research objective for the California Energy Commission is:

Update the CZ2010 reference files for each of the 86 Integrated Surface Database (ISD) weather stations in California, plus 11 new additions, for a total count of 97 locations, based on the most recent 20 calendar years of data for each station (1998-2017). There are fewer locations than for the CALEE2018 files for two reasons: (1) the use of statewide “typical months” meant that all stations had to have usable data for the same year, whereas for the CALEE2018 files a station that lacks monthly data for a certain year would just skip that year in selecting the “typical month”, (2) the longer 20 year period of record reduced the number of available locations. For convenience, these updated weather files for Title-24 compliance calculations will be referred in this document as the CZ2018 reference weather files.

3. DATA

All the raw weather data used in creating the roughly 2,300 weather files (117 locations x 20 years) came from two sources: (1) the weather station data was obtained from the Integrated Surface Database (ISD) maintained by the National Centers for Environmental Information (NCEI), which is a branch of the National Oceanic and Atmospheric Administration (NOAA), (2) the satellite-derived solar radiation data was obtained from the National Solar Radiation Database (NSRDB), maintained by the National Renewable Energy Laboratory in Golden, Colorado. Combining these two sources of data has resulted in weather files of unprecedented reliability and accuracy, especially the solar radiation data, which historically had been the most problematic climate parameter to obtain.

¹ CZ2018 is the name given these by the PI and refers to the year the project was initiated. The CEC has indicated that they will likely change the name to correspond to the next version of the Title-24 Standard for which the files will become the standard weather data, possibly CZ2023.

3.1 The Integrated Surface Database (ISD)

The availability of raw weather data on the Internet has expanded tremendously over the past 15 years. In particular, the US National Centers for Environmental Information (NCEI, formerly known before 2016 as the National Climatic Data Center or NCDC) started in 2006 to make the ISD (Integrated Surface Database) available through the Web. The ISD developed out of the NCDC's role under a 1960's World Meteorological Organization (WMO) resolution as the world's repository for surface observations, i.e., gathering and storing weather station reports from around the world. For several decades these reports were stored on computer tapes, but starting in 1998, the NCDC (NCEI), in partnership with the US Air Force and Navy, converted all the data to a common ASCII format and made them accessible via the Web. Up until 2011, the ISD was free only for US government, academic, and non-profit organizations, but since then it has been free for everyone. This database contains up to 40 years of weather data contributed by over 35,000 weather stations around the world. Of this, the data for over 14,000 stations (roughly 2,600 US and 11,000 non-US) are of sufficient resolution and period-of-record for developing detailed hourly weather files.

Since the ISD is an archive of weather data reported by stations in the participating nations, the data should be the same as that reported by the stations to their national meteorological bureaus. For the US stations in the ISD, they are simply the weather reports contributed by various National Weather Service stations and can be regarded as the standard for data completeness and reliability. A major benefit to the NCEI making the ISD database available on the Web is that, in addition, the reporting format for the data has been unified. The ISD data are reported in a standard DSI-3505 format containing 105 columns in fixed-field format for mandatory data elements, including Wind Speed and Direction, Sky Condition, Visibility, Dry-bulb Temperature, Dew point Temperature, and Atmospheric Pressure, followed by optional data elements in free-field format preceded by a three character alphanumeric code when reported (NCDC 2003).

Although this DSI-3505 format may seem confusing and intimidating at first glance, its implementation by NCEI has proven to be extremely consistent, and once the format has been correctly deciphered and the processing software debugged, the PI has not experienced any problems due to the data format, a situation for which NCEI deserves more recognition and acclaim.

For building energy simulations, the most useful optional data element was Cloud Cover, which is used by many solar models to estimate solar radiation, but this element has become much less important with the advent of satellite-derived solar radiation measurements, which are more complete, accurate, and easier to import into weather files. Other optional data elements that potentially have use in building energy simulations are Liquid Precipitation (or Rainfall) and Present Weather (for estimating rainfall or falling snow), while Visibility and Ceiling Height (reported mainly for use in aviation) are considered mainly for consistency with other weather file formats, such as TMY2, TMY3, or EPW. In addition to the observed data, these recent weather file formats also derive other climatic parameters such as the Extraterrestrial Radiation, Illuminance, Aerosol Optical Depth, Surface Albedo, and Precipitable Moisture.

It should be noted that the ISD is not a unified database, but an archive of weather data from around the world that NCEI has converted to the same data format. As a result, the data quality within the ISD can vary tremendously. The weather reports from major stations in the US, Canada, Europe, East Asia, etc., often have over 20,000 observations per year, i.e., more than three observations every hour. On the other hand, smaller weather stations or stations in less developed nations may provide too little weather data to create a usable weather file.

The data quality of the California weather stations in the ISD is comparatively good. Using 2017 as a benchmark year, the ISD contained data for 174 California locations. Of these, 43 stations were discarded either because the files were blank (2) or lacked Dry-bulb (4) or Dewpoint Temperature (35). The remaining 136 stations all report the four key critical weather parameters of Dry-bulb and Dew point Temperature, Cloud Cover, and Wind Speed, although 14 stations had sizeable data gaps of up to one month during the year. Of the other 121 stations, 114 have complete hourly records and require minimal processing, while one station reported data every six hours and six others reported data only during working hours, i.e., from 9 am to 5 pm.

The PI has had over ten years of experience in processing raw ISD data files, combining them with satellite-derived solar radiation data to create historical weather files, and then using the historical weather files to create "typical year"

weather files for various clients, including ASHRAE in producing the IWEC2 weather files (Huang 2011) and the CEC in producing the CZ2010 weather files. These experiences have led the PI to adhere to two basic principles in processing data into finished weather files.

The first principle is to never alter and clearly identify the raw data throughout the process, except for standard conversions such as from standard pressure to station pressure, cloud cover in octets to tenths, and expanding the liquid precipitation reported by duration (XX mm of rain per YY hours) to hourly values (see Section 4.1f for details). There are many advantages with adhering to this principle: (1) when anomalous values appear, it's easy to determine whether the cause is the raw data or the data filling method, (2) when problems are identified in the data processing or the processing methodology improved, these can often be amended in the processed file without having to go back to the raw ISD data files.

The second principle is to fill all the missing data, especially for elements that are used in building energy simulation programs. In the PI's opinion, the key value of the processed climatic data is that it removes the need for the building energy modeler to process the input weather data, with all the needed climatic information appearing in regular sequence hour-by-hour. Although some may argue that "truth in advertising" requires that missing data elements be shown as such, typically with a flag value such as "999", in most circumstances the creator of the weather files is likely to have more experience in data filling. Additionally, the filled data are always clearly indicated so that users can always override those values. In adherence to this principle, nearly all the climatic data elements in the finished weather file are filled, especially those required by building energy simulation programs, including such stochastic elements as Wind Direction, Cloud Cover, and Present Weather. Users of the weather files should be aware that such filled values have limited reliability and that any analysis, such as calculating their frequency distribution or "wind roses", should be done only with the actual observed values. The only climatic data element for which data filling is not attempted is Liquid Precipitation, or rainfall. Here, only the observed precipitation, after considerable processing, is reported, with missing data assumed to signify no precipitation.

The following Section 4.1 describes the methodologies used in processing the observed climatic data elements, Section 4.2 describes the incorporation of satellite-derived solar radiation, and Section 4.3 covers the methodologies used in calculating the other derived climatic data elements. Section 5 describes step-by-step the programs and procedures that implement the described methodologies starting with the raw ISD data files and ending with the historical year weather files. The selection of the "typical months" and the creation of the CZ2018 and CALEE2018 "typical year" files from the historical weather files are described separately in Section 8 later in the report.

3.2 The National Solar Radiation Data Base (NSRDB)

Until the advent of weather satellites and the development of irradiance models to derive solar radiation from satellite imagery, the solar radiation in standard weather files were all derived using analytical models for clear sky irradiance and empirical models for all sky irradiance based in reported Cloud Cover and other climatic parameters. A good summary of such modelling techniques can be found in Iqbal (1983). Although measured solar data might have been used to calibrate the solar models, such data were too rare for direct use in weather files, and the use of solar models was the only practical solution.

Since solar radiation was the only weather parameter that was calculated rather than directly measured, it was the most contentious and challenging aspect in the creation of weather files. For example, the technical reports for the TMY2, TMY3, IWEC, and IWEC2 weather sets all devoted the lengthiest discussion on deriving the solar radiation (Marion and Urban 1995, Wilcox and Marion 2008, Thevenard and Brunger 2001, Huang. 2011).

There are numerous difficulties in modelling solar radiation due to limitations in both the models and the input data. A review of Iqbal (1983) indicates that modelled solar radiation are generally reliable for the domain (location, time of year, etc.) for which the model was developed but much less so when applied to other locations and times (Dutton 2006). Additionally, the key input value for cloud cover tends to be reported less regularly than temperature, humidity, or wind, and the values are by human observation, which can be subjective.

The use of satellite imagery to calculate solar irradiance has many advantages. The data are comprehensive and uninterrupted, now making solar irradiance the most readily available weather parameter of all. The technology for

deriving the incoming solar radiation at the surface from a satellite image of the cloud cover and reflected surface radiation has been under development in several countries around the world for almost twenty years (see Perez et al. 2002 as an example).

Interest and governmental support for such work is largely derived from its clear benefits to the solar power industry, where accurate estimates of solar resources affect site selection and economic evaluations. Starting in the early 2000's, commercial companies have provided satellite-derived solar and weather data to the solar industry, such as Clean Power Research (CPR 2019) and Solargis (2019). Through collaborative agreements with governmental agencies or financial institutions, these companies have made some of their data public, such as CPR's SolarAnywhere portal providing hourly solar for the US from 1998-2012 (CPR 2019b) or SolarGIS's solar maps showing average annual irradiance anywhere in the world (SolarGIS 2019b). However, their commercial data, e.g., hourly time-series of solar irradiance, generally costs hundreds to over a thousand dollars per site per year. Starting in the early 2010's, several government-supported national or international agencies have also been established to provide satellite-derived solar irradiance for different parts of the world for free or at a low price.

For the 2010 project to develop the CZ2010 weather files, the PI obtained satellite-derived solar radiation data covering all of California from 1998 through 2009 that was purchased from CPR by the CEC and gained insights into working with satellite-derived solar radiation. At the beginning of the current project, the PI had several discussions with PG&E and the CEC about different options to obtain satellite-derived solar radiation data, with the consensus to use the NSRDB instead.

The National Renewable Energy Laboratory (NREL) is a US Department of Energy laboratory that is recognized throughout the world as a leading research center on solar energy. Since the 1990s, NREL has produced several iterations of the National Solar Radiation Data Base (NSRDB) that contained 30 years of solar radiation and related meteorological data. These were used to produce the TMY files that are the de-facto standard "typical year" weather files for the US. Version 1 of the NSRDB NREL (1992) contained 1961-1990 data for 237 US locations, as did the corollary TMY2 weather files (Marion and Urban 1995). Version 2 (Wilcox 2012) contained 1991-2010 data for 1,454 US locations, while the corollary TMY3 weather files contain 1,020 locations (Wilcox and Marion 2008).

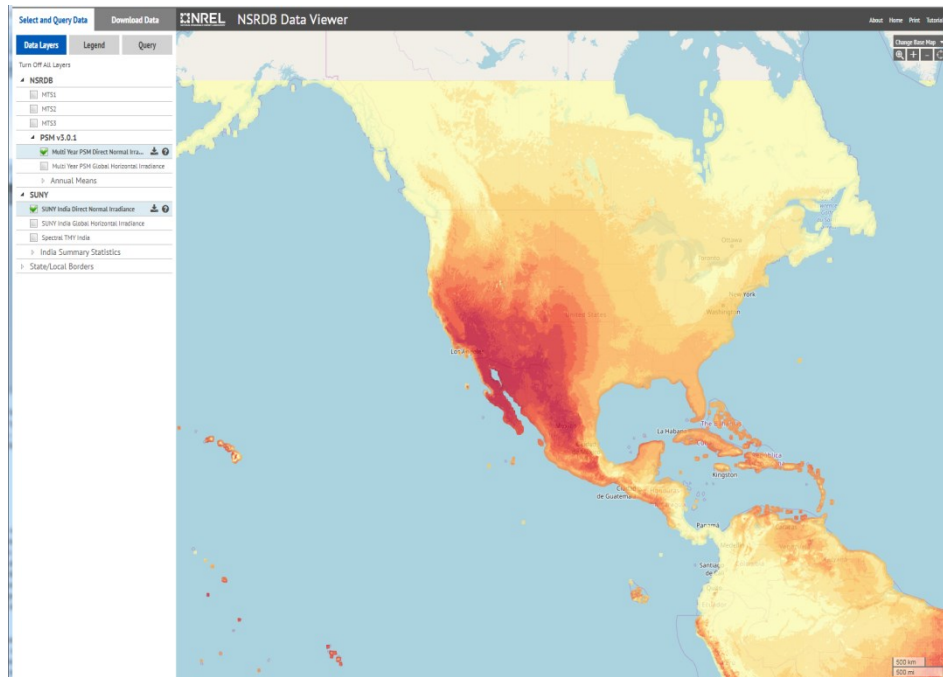
Versions 1 and 2 were both based on standard weather station data (the same as recorded in the ISD) and have been released online as sets of weather files. The hourly solar radiation was modeled using a cloud-based METSTAT model (Marion and Urban 1995).

The current NSRDB is a major change from previous versions because it uses satellite-derived in place of modeled solar radiation and the data is released through an interactive Web-based GIS application called the NSRDB Viewer (NREL 2019a, Habte et al. 2017). The current version (v2.0.0) was developed using the Physical Solar Model (PSM) using satellite imagery from 1998 through 2017. These images contain approximately "2 million 0.038-degree latitude by 0.038-degree longitude surface pixels (nominally 4 km²)", and the area covered "is bordered by longitudes 25° W on the east and 175° W on the west, and by latitudes -20° S on the south and 65° N on the north" (NREL 2019b).

The NSRDB Viewer displays an interactive base map of the world with the areas covered by the NSRDB indicated by isopleth maps of solar radiation (see Figure 1). The user can drag a pointer to a location and select the years, data attributes, and download options, such as using UTC or local time, half hour or hour intervals, etc. Once the data are ready, the user receives an e-mail with a download link.

Although the Viewer is handy for specifying and downloading a handful of solar files, since this project required downloading nearly 3,000 station-years of solar data, the PI received help from NREL staff to use a Python API for batch download of the solar data. Since NREL imposes limits on downloading to preserve bandwidth for other users, obtaining twenty years of solar data for 130 locations took about a week of time, and this had to be repeated at least once within the past year as NREL upgraded from Version 2 to Version 3 of their Physical Solar Model (PSM V3.0.1) (NREL 2019).

Figure 1. NSRDB Data Viewer Selection Screen



While the NSRDB Viewer also provides meteorological data, these are not from observations but from MERRA reanalysis (Roth 2019) and should be regarded with caution. The Viewer can also provide “typical year” data extracted from the time-series, but these should also be regarded with caution for the same reason. Lastly, it should be noted that the solar irradiances are instantaneous values and not aggregated totals as needed for building energy simulations. There is more discussion about this situation in Section 4.2.

4. PROCESSING THE RAW DATA

4.1 Processing ISD climatic data elements

The biggest challenge encountered in processing the observed climatic data is how to deal with missing data elements. This project treats missing data elements in different ways depending on their importance and whether there are any meaningful ways for interpolation. For those elements regarded as stochastic, such as wind direction and present weather, the approach is to use a "step function" that repeats the last available data element for half of the duration and repeats the next available data element for the remaining half of the duration of the missing interval. For those elements regarded as sequential, such as pressure, wind speed, cloud cover, opaque cover, ceiling, and visibility, the approach is to use linear interpolations. A more elaborate interpolation procedure has been developed for dry-bulb and dew point temperatures, partly because of its importance in building energy simulations and partly because diurnal temperature profiles are relatively predictable.

The reporting of liquid precipitation, i.e., rainfall, is rather distinct and requires special treatment. Although the original intent was to simply pass on what was reported, i.e., multiple and often overlapping reports of rainfall amount and duration, this is judged to be not very usable and frequently misleading to users. Hence, an attempt has been made to interpret and reconcile the reported rainfall amounts and durations, that are then reported as simple hourly values. For more information on the processing of liquid precipitation, see Section 4.1f.

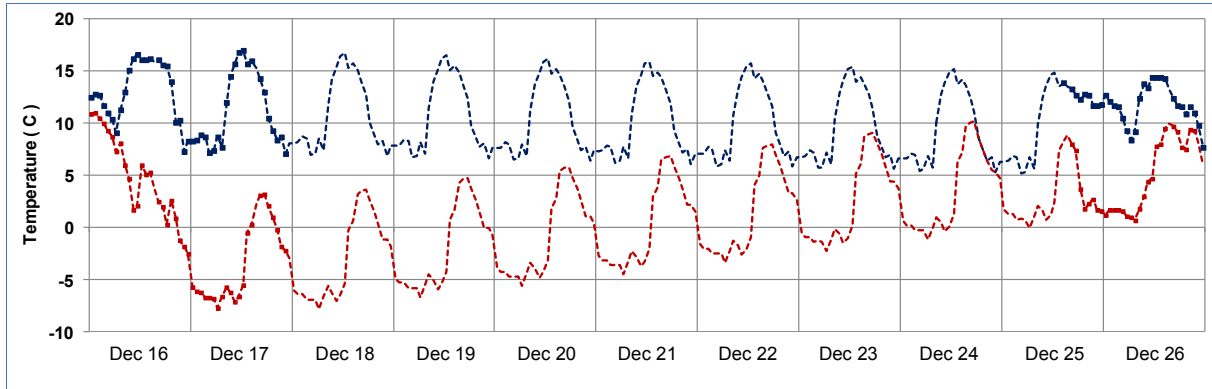
a. Dry-Bulb and Dew Point Temperatures

To interpolate for missing dry-bulb temperatures, a two-step process has been used, with an optional third step added to improve the nighttime temperature profile for the 4 or 5 stations that do not record temperatures at night.

In the first step of the two-step process, missing temperatures are filled using linear interpolation if the gap is less than eight hours. If the gap is greater than eight hours, they are filled by repeating the temperatures at the same hours the previous day, but with the beginning and end hours of the gap linearly interpolated to match the observed value. This is done in the awk script *ncdcfm7.awk* described in Section 5.1b.

Figure 2 shows the application of this technique to repeat the last available daily profile while matching the beginning and end temperatures of the gap, when there is a gap of two days in the data for Monterey Peninsula the week before Christmas in 2017. The filled dry-bulb and dew point temperatures are shown by the dotted lines in blue for dry-bulb and red for dew point temperatures.

Figure 2. Missing temperature data for Monterey WMO 724915 Dec. 16-26, 2017



In the second pass, the interpolated values for the hours from 6 to 19 are recalculated using the following Fourier Series (Equation 1) based on the PI's previous work with Q.Y. Zhang on Chinese weather data (Zhang et al. 2002):

$$\theta(t) = b_0 + \sum \{ b_n \cos(n \frac{\pi}{12} t) + a_n \sin(n \frac{\pi}{12} t) \} \quad (1)$$

where $b_0 = 1/8 \sum_{k=1}^8 \theta(k)$

$$b_n = 1/4 \sum_{k=1}^8 \theta(k) \cos \frac{n\pi k}{4}$$

$$a_n = 1/4 \sum_{k=1}^8 \theta(k) \sin \frac{n\pi k}{4}$$

n = nth term of the Fourier series

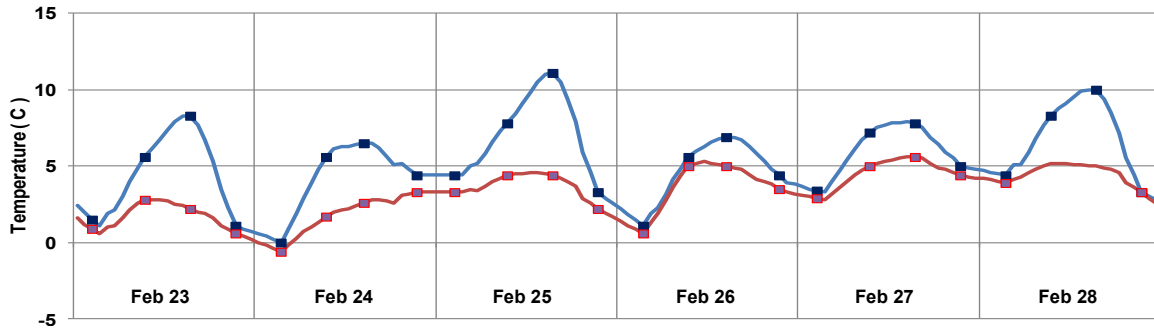
k = sequential number of temperature from hours 1 to 8 at three-hour intervals

$\theta(k)$ = k^{th} observed temperature

t = local standard time

The main purpose for this rather elaborate procedure is to smooth the profile and capture the daily maximum occurring during these hours for stations that do not have hourly data. Among the California stations, there is only one such station, Eureka, which reports data every six hours, at the very bottom of data completeness for creating a weather file (Figure 3). All the other California stations have close at least hourly reports, in which case this Fourier Series technique is not needed. The Fourier interpolation is done in the *fourier7.awk* script, described more fully in Section 5.1

Figure 3. Dry-bulb and dew point temp in Eureka (WMO 725940) Feb. 23-28, 2017



The two-step procedure is applied to both the dry-bulb and dew point temperatures and appears to address two distinct kinds of data gaps, the first being episodes when data are lost for an extended time, and the second being short regularly repeating gaps within a day, e.g., when a station records data at three-hour intervals. However, there is a third type of data gap that is not adequately addressed by the two-step procedure. There are four weather stations out of the 117 (El Monte_747043, San-Clemente-Island-NAAS_722925, Torrance-Muni-AP_722955, and Whiteman-AP_745057) that report weather conditions only during the day, but not at the night. With the two-step procedure, the results are straight line interpolations from the early evening to the early morning hours, thus missing the nighttime minima typically occurring between 3 and 5 a.m.

For these stations, a procedure has been developed that replaces the linearly interpolated values between the last evening and the first morning hours, when the first morning temperature is lower than the last evening temperature, and the interpolation period exceeds 8 hours, by a sine curve so that the nighttime minimum temperatures are also captured.

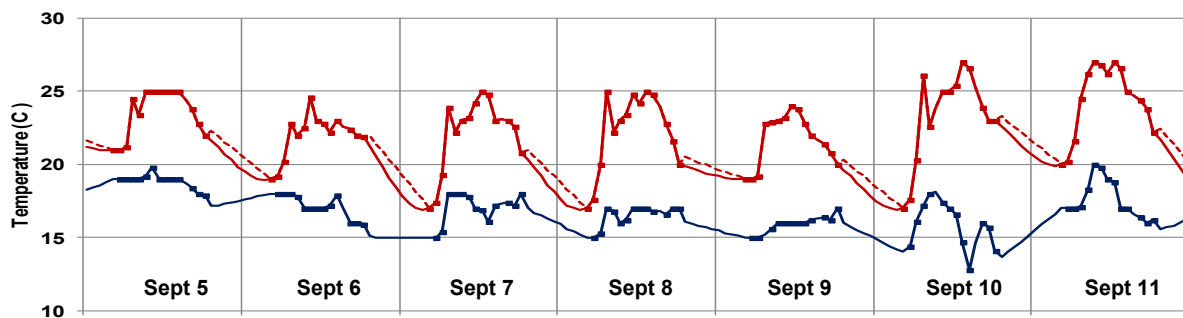
$$\theta(k) = \cos\left(\frac{2\pi*(k+8)}{24}\right)*\text{daily_range} + \text{daily_mean} \quad (2)$$

where θ = interpolated temperature
 k = hour of day for temperature gap
 daily_range = calculated from beginning and end temperatures of gap
 daily_mean = calculated from beginning and end temperatures of gap

Although the procedure was developed for both dry-bulb and dew point temperatures, after testing the decision was made to apply it only to the dry-bulb temperatures, and to use a simple linear interpolation for the dew point temperatures. When the morning (dry-bulb) temperature is higher than the last available nighttime temperature, the dry-bulb temperatures also revert to a simple linear interpolation, instead.

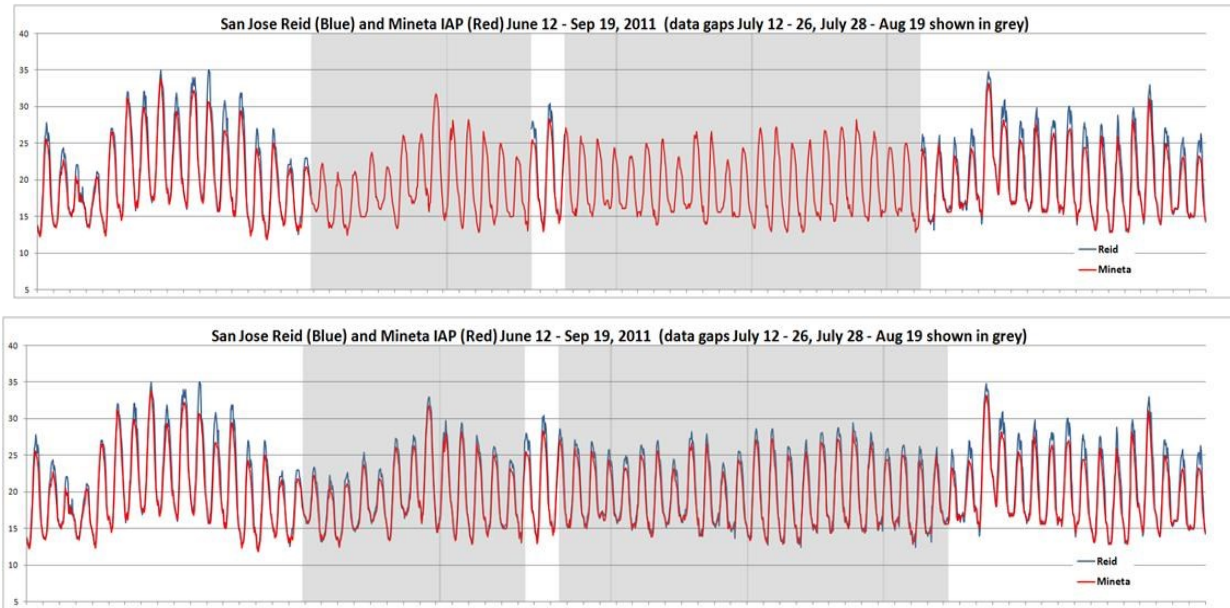
This optional third step is implemented with two brief awk scripts, *dbtsine.awk* and *dptlinear.awk*, and used to modify the missing nighttime dry-bulb and dew point temperatures for these four stations. Figure 4 shows what happens when this optional third step is applied to the Torrance station that did not report between Hours 19 and 5 on all days. The dotted red line shows the linear interpolation from the two-step procedure, with straight lines during the missing hours, while the solid red line shows the results from the sine curve to bring out the putative nighttime minima at Hour 5.

Figure 4. Dry-bulb and dew point temp for Torrance (WMO 722955) Sept. 5-11, 2017



When there are stations in close proximity, spatial interpolation was also used with good results. The top plot in Figure 5 shows that in 2011 San Jose Reid Airport was missing dry-bulb temperatures shown in blue line from July 12 to 26, and from July 28 to August 19, with the two periods indicated by the light grey tint. However, San Jose Mineta Airport had complete temperature records throughout those two periods, as indicated by the red line. The two airports are located within six miles of each other in similar suburban settings, although Reid is twice as far away from the south end of San Francisco Bay and at a slightly higher elevation. Comparing their temperatures in the periods when both were reporting data, it's clear that then temperatures are virtually identical, except for the daytime maxima where Reid consistently showed temperatures that were 2-3° C higher.

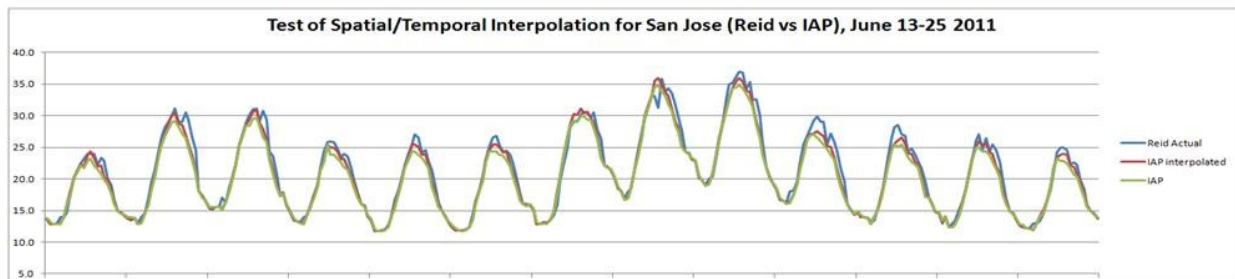
Figure 5. Temperatures at San Jose Reid and Mineta Airports in July and August 2011

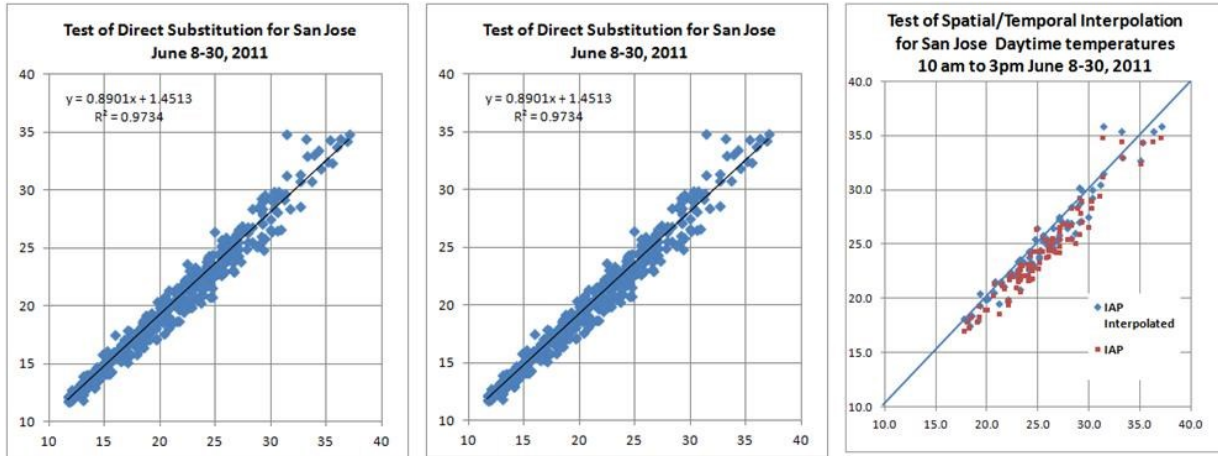


A script was written to track the differences in temperature by time of day and the daily temperature range, since it's apparent that differences in daily maxima was reduced on cool and cloudy days. This script was then used to spatially interpolate the temperatures at Reid Airport during the two data gap periods (see lower plot of Figure 5).

To test the accuracy of this spatial interpolation, it was also applied to the period immediately before the data gaps and the interpolated temperatures compared to the actual temperatures at Reid Airport (see top plot of Figure 6). The X-Y plots (see bottom plot of Figure 6 on the next page) comparing the actual to the interpolated temperature by direct substitution (left) and spatial-temporal interpolation (center) show that the latter has a slightly higher R^2 . Since the temperature differences only appear around the noontime peak, the third X-Y plot on the right compares direct substitution (red dots) to spatial interpolation (blue dots) only for hours between 10 am and 3 pm. This shows that spatial-temporal interpolation is clearly better than direct substitution with a standard deviation of less than 1° C.

Figure 6. Comparison of direct substitution to spatial-temporal interpolation using San Jose Mineta Airport to fill in missing temperature data in San Jose Reid Airport, summer 2011.





This spatial-temporal procedure was applied in several other cases where there were extended time gaps in temperature records.

b. Pressure

The ISD reports standard pressure that has been corrected to sea level. These are calculated back to the actual station pressure using the following equation (Sandhurst 2009):

$$\text{Station Pressure} = \text{Sea Level Pressure} * e^{-\text{elev} / (\text{temp} * 29.263)} \quad (3)$$

where

- Station Pressure = barometric pressure in millibars (hectopascals)
- Sea Level Pressure = reported pressure at sea level in millibars (hectopascals)
- elev = station elevation in meters
- temp = current temperature in Kelvin (K)

Many of the weather files have no or very infrequent recordings of standard pressure. If pressure data are regularly recorded, linear interpolation is used for missing values. If pressure data are infrequent or nonexistent, values from a suitable nearby station with values are substituted. If no suitable station can be found, a constant mean sea level pressure of 1013.25 millibars (29.92 in Hg) is used. This data element is processed by the awk script *ncdcfm7.awk*.

c. Wind Speed

To interpolate for missing wind speed data, linear approximations are used. This data element is processed in the awk script *ncdcfm7.awk*.

d. Wind Direction

To fill in missing wind direction data, a "step function" is used whereby the last observed wind direction is repeated for the first half of the missing hours, and the next observed wind direction is repeated for the second half of the missing hours. These filled wind directions have scant reliability, since there is no credible method to estimate wind direction in the absence of data, and should not be used in any analysis, such as calculating the frequency distribution of wind directions or "wind roses", which should be done only with the actual observed values. This data element is processed in the awk script *ncdcfm7.awk*.

e. Cloud Cover

The ISD data format contains fields for Total Sky Cover and Opaque Sky Cover, but the latter are mostly missing. The Total Sky Cover is read as octets and converted to tenths of Cloud Cover. To interpolate for missing Cloud Cover data, linear approximations are used. Since the Opaque Sky Cover is not used in any building energy simulation program and mostly missing in the ISD, this climatic element is one of the few that has been left as "99", a flag to

indicate missing data. This data element is processed in the awk script *ncdefm7.awk*. Sky Cover records are much less important in this project because of the use of satellite-derived solar.

f. Liquid Precipitation

Liquid Precipitation or rainfall has been included in the TMY3 format for the first time. For building energy simulations, this data element is needed for simulating the performance of green roofs. Unfortunately, the way that rainfall is reported in the ISD is difficult to interpret. There are two fields giving the amount of rainfall in mm and the time period in hours covered by the recording. For example, a recording may indicate there are 20 mm (0.79 in.) of rainfall over the past 12 hours. The difficulty arises when there are multiple recordings for overlapping time periods that may be inconsistent, as when the 24-hour rainfall exceeds the sum of the reported rainfall for the day, or even contradictory, as when the 24-hour rainfall is less than that reported for a shorter period within that day. To reconcile these reports, an algorithm has been developed to convert them to hourly rainfall using the following assumptions:

- 1) forward marching, i.e., never adjust any previous reported value;
- 2) if a report is multi-hour, distribute rainfall equally for the preceding number of hours reported;
- 3) if reports are overlapping, subtract the amounts already reported, and apportion the remaining rainfall equally to the hours following the previous report;
- 4) for reports that are completely overlapping, i.e., multiple reports (this happens most often with a 24-hour report overlaying 6-hour reports), if the overlapping report is less than the sum of already reported amounts, ignore; if more, distribute the unaccounted rainfall equally to hours that are unreported; but if there are no unreported hours, ignore the excess;
- 5) if duration is unreported (99), assume duration is from last report, unless it's over 24 hours in which case assume 24 hours.

This algorithm was first developed by the PI for the ASHRAE IWEC2 weather files and has been tested on over 6,000 ISD files from around the world, including several hundred in the US and Canada. That testing shows that: (a) while only 5.6% of the international stations reported no rainfall (333 out of 5988), 26.8% of the US and Canadian stations did so (425 out of 1585), suggesting that a significant number of North American may be failing to report rainfall at all; (b) the reported rainfall for many station fluctuated greatly depending on the year; and (c) a few locations reported impossibly high rainfall that can be an order of magnitude greater than their reported annual average.

Continued review of the derived liquid precipitation for all 3,012 IWEC2 weather files showed that a small number of isolated reports of excessive rainfall were skewing the total annual precipitation in a quarter of the files. For example, in 263 files a single report of hourly precipitation above 50 mm/hr (spread out over several hours due to the distribution algorithm) made up more than half of the total annual precipitation. To weed out such unusual and possibly spurious liquid precipitation reports, two cutoff limits were added to exclude hourly precipitation values above 50 mm/hour or daily precipitation values above 150 mm/day.

For more discussion of this algorithm and why the cutoff limits were instituted, please refer to Huang et al. 2011, pp. 56-45. This data element is also processed in the awk script *ncdefm7.awk*, to which this algorithm has been incorporated.

g. Present Weather

Present Weather refers to a numerical code by meteorologists to indicate the weather condition, e.g., rain, driving rain, snow, sleet, fog, etc. Although NREL included a 10-digit code for Present Weather in the TMY2 format (Marion and Urban 1995), NREL eliminated Present Weather in their later TMY3 format (Wilcox and Marion 2008). Because of its usefulness for indicating instances of rain or snow fall, the PI extracted the Present Weather code that appears in the ISD and inserted it as an additional field at the end of the TMY3 format. However, the Present Weather code in the ISD is the internationally recognized METAR 2-digit code for rather than the obsolete 10-digit code used in the TMY2 (NCDC 2003). This Present Weather code appears in the CSV and FIN4 formats of the weather files, but not in the EPW or BINM formats. To fill in missing Present Weather data, a "step function" is used whereby the last

observed present weather is repeated for the first half of the missing hours, and the next observed present weather is repeated for the second half of the missing hours. This data element is also processed in the awk script *ncdcfm7.awk*.

4.2 Processing satellite-derived solar from the NSRDB

Importing satellite-derived solar radiation data into a standard weather file can be as simple as a line-by-line insertion or substitution of original modelled radiation, provided that the nomenclature and time conventions are consistent between the two sets of data. Unfortunately, often they are not, making it important to check and make any necessary adjustments to the solar data.

The problem lies with synchronizing the solar data time with that of the weather files. The difficulty of time synchronization is complicated because there are two ways that solar radiation is reported, either as an instantaneous rate or as a total integrated over the time step. In the US, solar radiation on a weather file is the aggregated total over the previous time step. For example, Hour 12 would show the total amount of solar radiation from 11:00 to 12:00. This is also the format needed for building energy simulation programs. However, in most other countries and in satellite-derived solar databases (including the NSRDB), it is the instantaneous rate at the time step, e.g., Hour 12 would show the rate of solar radiation at 12:00. Since the vast majority of weather files are hourly, the units are the same between both types of data, i.e., 1 watt-hour == 1 W/hr, so the only difference arises from half-hour time data.

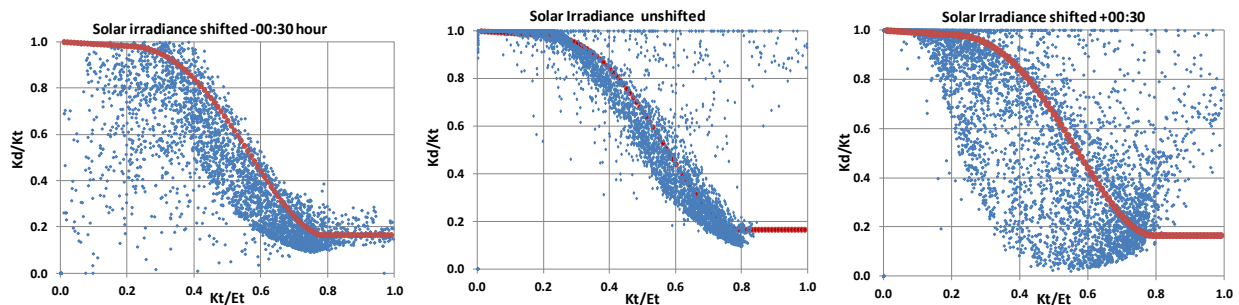
Since the NSRDB provides satellite-derived solar values at the half-hour, a simple way to convert NSRDB solar values to the US convention would be to calculate the hourly solar as

$$0.25*SOL_{-1hr}+0.50*SOL_{-30min}+0.25*SOL_{hr}. \quad (4)$$

Although a 30-minute discrepancy in the solar radiation might seem like a minor difference, it can cause numerous strange effects, especially at sunrise and sunset hours, since the energy simulation program would be computing sun positions that would be off by half an hour.

For years, the PI tried with moderate success various methods to detect synchronization problems, such as counting the number of hours with non-zero sun angles and no solar radiation, i.e., the sun is above the horizon but there is no solar radiation, etc. In 2018, the author learned of a graphical method that proved to be very useful by plotting the ratio between the global and extraterrestrial horizontal irradiance (K_t/E_t) against the ratio between the diffuse and global horizontal irradiance (K_d/K_t). Figure 7 shows the striking difference in the plots when the solar radiation is synchronized (middle) compare to when they're ahead (left) or behind (right) by a half hour. The thick red line shows the theoretical relationship as calculated by the well-known Erbs Model (Erbs, Klein, and Duffy 1982).

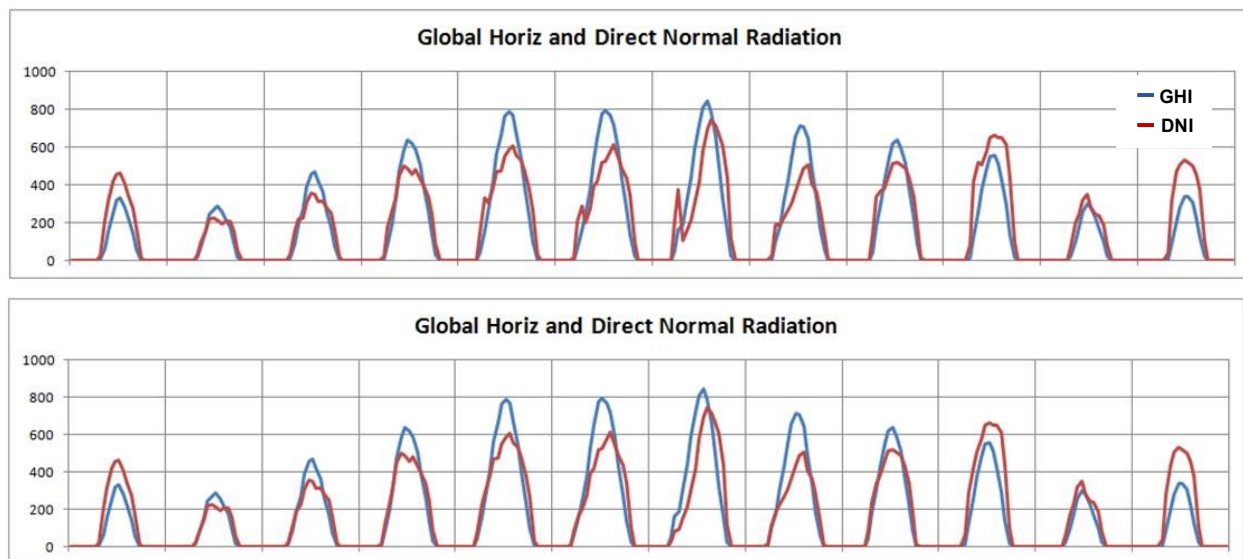
Figure 7. K_d/K_t versus K_t/E_t for Devil's Island WI 2016 with the time stamp for solar irradiance at various shifts



Use of this graphical technique has assured the PI that the possibility of faulty time synchronization of the solar radiation no longer exists.

During the production of the CZ2018 and CALEE2018 files, the PI noticed a sharp morning spike in the solar radiation during the summer months in more than 30 locations, all situated along or near the Pacific coast. The top plot on Figure 8 shows the average daily solar profile by month for Arcata. NREL staff considered the satellite imagery of cloud conditions at sunrise too unreliable due to the very low sun angles, and so the imagery was ignored, and the cloud cover was assumed to be clear. Since there is a high frequency of morning fog along the coast during the summer, this would be detected in the satellite imagery for the second or third hour after sunrise, thus causing the pronounced spikes in the solar hourly profile from May through August. Until NREL decides to modify its model assumptions, a simple correction has been added so that the cosine of the solar angle ($K_t \cdot \cos(Z)$) is the same for hours during the spike and immediately after the spike. The lower plot of Figure 8 shows the average monthly solar profiles after the correction has been added.

Figure 8. Average daily solar profile by month for Arcata



4.3 Calculating other derived climatic data elements

a. Illuminance

The total horizontal, diffuse horizontal, and direct normal illuminances in lux and the zenith illuminance in cd/m^2 are calculated using a luminance efficacy model developed by Perez et al. (1990). The inputs to the model are the global horizontal and direct normal irradiance, solar zenith angle, and the dew point temperature. It is not clear if these illuminances are used in any building energy simulation program.

b. Albedo and Aerosol Optical Depth

These derived values appear in the TMY3 weather file format, probably because they are needed as inputs for the Metstat Model used by NREL to derive solar radiation (NREL 1995). The albedo shown in the TMY3 files refers to the geographical region of the station, not the immediate surroundings for the building (which is of more interest to building energy simulations), and is a monthly value obtained from the Earth Radiation Budget Experiment (ERBE) satellite data base available for a 1° by 1° grid (Wilcox 2009). The Optical Aerosol Depth is also a derived value, the calculation for which is described cursorily in NREL 1995. Since neither of these two values is used for the solar modeling, nor have relevance for building energy simulations, they have not been calculated and a “9900” code inserted in the weather files to indicate missing data.

5. PROGRAMS AND PROCEDURES

5.1 Main procedure for processing weather files

The processing of the historical year weather files is done using a series of awk scripts and a Fortran program, that are called by a MS-DOS batch file *mkncdc3.bat* (see Figure 9 for listing). When *mkncdc3* is called, it requires 11 arguments in sequential order giving (1) output subdirectory name, (2) year, (3) station name, (4) first station (WMO) number, (5) second station number, (6) WMO region, (7) time zone, (8) time zone code, (9) latitude, (10) longitude, (11) elevation (m), and (12) Köppen climate region designation. Figure 10 shows an excerpt from the main *mkallncdc.bat* file invoking a series of test runs repeated for various purposes.

Figure 9. Listing of the *mkncdc3.bat* batch file

```
rem ONE-STEP PROCEDURE FOR GENERATING HISTORICAL WEATHER FILES FROM ISH DATA
rem by Joe Huang Dec. 11, 2005
rem modified Aug 28, 2006 for processing all ISH data files
rem modified Feb 18, 2009 for ASHRAE project
rem modified May 11, 2009 to work with doewthm, fmtwth2m, and wthfmt2m

rem preliminary clean-up if old files exist
erase *.TMP
erase OUT*. *
erase WEATHR.TMP
rem set paths
set ISH=C:\HomeHDJoe\Duplicate\SU_Fenxian_HDD
rem set OutDir=J:\HomeHDJoe\Duplicate\NewLaptopJoe\Wthdat\NCDC\%1
set OutDir=%1
set/a thisyr=%2
set stanam=%3
set filenam=%3"_"%4

rem Step 0: truncate ISH file to needed data, read prev. or following year's files for missing hours
rem and convert to local time
rem
rem erase STATS.OUT
rem erase %3%thisyr%.DAT
erase %4-%5-*
set/a thisyr=%thisyear%-2000
if %thisyr% LSS 0 set/a thisyr=%thisyr%+100
if %thisyr% LSS 10 set thisyr=0%thisyr%
set timezone=%7
set/a lastyear=%thisyear%-1
gunzip < %ISH%\%lastyear%\%4-%5-%lastyear%.gz > scratch.tmp
tail -n 24 scratch.tmp > RAWDATA.TMP
erase scratch.tmp
gunzip < %ISH%\%thisyear%\%4-%5-%thisyear%.gz >> RAWDATA.TMP
pause
set/a nextyear=%thisyear%+1
gunzip < %ISH%\%nextyear%\%4-%5-%nextyear%.gz > scratch.tmp
head -n 24 scratch.tmp >> RAWDATA.TMP
erase scratch.tmp
awk2001 -f UTIL\readfil6.awk staname=%filenam% station=%4 yr=%thisyear% timezone=%7 RAWDATA.TMP
copy OUT.DAT %filenam%_%thisyr%.DAT

rem copy STATS.OUT %filenam%_%thisyr%.STAT
rem ..\UTIL\zip -j %OutDir%\%3DAT.ZIP %filenam%_%thisyr%.DAT
rem zip -j %OutDir%\%3DAT.ZIP %filenam%_%thisyr%.DAT
rem erase RAWDATA.TMP
rem erase %filenam%_%thisyr%.DAT
rem erase STATS.OUT

rem Step 1: get *.DAT file from ZIP file and process to fill in missing values by linear interpolation
rem input = [location][year].DAT, output = OUT.TMP
shift
shift
shift
awk2006 -f UTIL\ncdcfm7.awk loc=%stanam% yr=%thisyear% wmo=%3 tz=%4 tzcode=%5 lat=%6 lon=%7 elev=%8 koeppen=%9 OUT.DAT

rem ..\UTIL\zip -j %OutDir%\%32DAT.ZIP %filenam%_%thisyr%.2DAT
rem erase OUT.DAT

rem Step 2: modify weather file with fourier interpolation for temperatures, and make wyec2 format weather file
rem (don't do this - fourier4.awk has formatting problems, fourier5 has logic problems, i.e., overwrites good data YJH 06_0828)
rem input = OUT.TMP, outputs = OUT2.DAT, WEATHR.TMP (full file in WYEC2 format without solar data)
awk -f UTIL\fourier7.awk OUT.TMP > OUT2.DAT
rem disable until solved YJH 09)0618
rem copy OUT.TMP OUT2.DAT

rem Step 3: use doewthm2 to calculate solar and pack weather into DOE *.BINM
rem inputs = WEATHR.TMP (OUT2.DAT), INPUT.TMP, HEADER.TMP (both created by fix0.awk from stninfo4.txt)
rem outputs = NEWTH.TMP (DOE-2 binary file), OUT3.DAT (fin file), IWEC.TMP (TMY2 format file)
if exist WEATHR.TMP erase WEATHR.TMP
awk -f UTIL\fix0.awk year=%thisyear% OUT2.DAT
rem copy OUT2.DAT %OutDir%\%filenam%"_"%thisyr%.OUT2 >nul
copy OUT2.DAT WEATHR.TMP
```



```

c:\wthdat\UTIL\doewthm2

Rem if exist %OutDir%\%filename% "%thisyr%.BINM erase %OutDir%\%filename% "%thisyr%.BINM
Rem copy NEWTH.TMP %OutDir%\%filename% "%thisyr%.BINM >nul
Rem if exist %OutDir%\%filename% "%thisyr%.IW2 erase %OutDir%\%filename% "%thisyr%.IW2
rem killed for ISHRAE2 runs sed 's/ //' IWEC.TMP > %OutDir%\%filename% "%thisyr%.IW2
Rem if exist %OutDir%\%filename% "%thisyr%.FIN3 erase %OutDir%\%filename% "%thisyr%.FIN3
copy OUT3.DAT %OutDir%\%filename% "%thisyr%.FIN3
erase OUTPUT.

rem Step 4: clean up any left over files, and zip all saved files to [Location][year].ZIP file
erase OUT3.DAT
erase *.TMP
erase WEATHER.*
erase FMTWTH.INP
erase SOLAR.TMP
erase %OutDir%\%filename% "%thisyr%.ZIP
Rem ..\..\UTIL\zip -j %OutDir%\%stanam%DOE2.ZIP %OutDir%\%filename% "%thisyr%.BINM
Rem ..\..\UTIL\zip -j %OutDir%\%stanam%DOE2.ZIP %OutDir%\%filename% "%thisyr%.STA
Rem ..\..\UTIL\zip -j %OutDir%\%stanam%FIN.ZIP %OutDir%\%filename% "%thisyr%.FIN2
Rem erase %OutDir%\%filename% "%thisyr%.BINM
Rem erase %OutDir%\%filename% "%thisyr%.STA
Rem erase %OutDir%\%filename% "%thisyr%.FIN2

```

Figure 10. Excerpt of *mkallncdc.bat* master batch file

```

@rem call mkncdc6 ISH2017\USA 2017 CA_BISHOP-AP 724800 23157 4 -8.0 NAP 37.371 -118.358 1250 Csb 0.97
@rem call mkncdc6 ISH2017\USA 2017 CA_MERCEDE-CASTLE-AFB 724810 23203 4 -8.0 NAP 37.383 -120.567 58 BSk 0.90
@rem call mkncdc6 ISH2017\USA 2017 CA_MERCEDE-MUNI-MACREADY 724815 23257 4 -8.0 NAP 37.285 -120.513 46 BSk 0.87
@rem call mkncdc6 ISH2017\USA 2017 CA_VACAVILLE-NUT-TREE 724828 93241 4 -8.0 NAP 38.378 -121.958 33 Csa 1.09
@rem call mkncdc6 ISH2017\USA 2017 CA_SACRAMENTO-EXECUTIVE-AP 724830 23232 4 -8.0 NAP 38.507 -121.495 4 Csa 1.06
@rem call mkncdc6 ISH2017\USA 2017 CA_SACRAMENTO-MATHER-FL 724833 23206 4 -8.0 NAP 38.567 -121.300 30 Csa 1.11
@rem call mkncdc6 ISH2017\USA 2017 CA_MCCLELLAN-AFB 724836 23208 4 -8.0 NAP 38.667 -121.400 23 Csa
@rem call mkncdc6 ISH2017\USA 2017 CA_BEALE-AFB 724837 93216 4 -8.0 NAP 39.133 -121.433 34 Csa 1.11
@rem call mkncdc6 ISH2017\USA 2017 CA_YUBA-CO 724838 93205 4 -8.0 NAP 39.102 -121.568 18 Csa 1.07
@rem call mkncdc6 ISH2017\USA 2017 CA_SACRAMENTO-METRO-AP 724839 93225 4 -8.0 NAP 38.696 -121.590 7 Csa 1.06
@rem call mkncdc6 ISH2017\USA 2017 NV_NORTH-LAS-VEGAS 724846 53123 4 -8.0 NAP 36.212 -115.196 671 Bwk 1.01
@rem call mkncdc6 ISH2017\USA 2017 CA_MONTEREY-PENINSULA 724915 23259 4 -8.0 NAP 36.588 -121.845 50 Csb 1.08
@rem call mkncdc6 ISH2017\USA 2017 CA_STOCKTON-METRO-AP 724920 23237 4 -8.0 NAP 37.889 -121.226 7 Csa 1.03
@rem call mkncdc6 ISH2017\USA 2017 CA_MODESTO-CITY-CO-AP 724926 23258 4 -8.0 NAP 37.624 -120.951 22 Csa 1.05
@rem call mkncdc6 ISH2017\USA 2017 CA_LIVERMORE-MUNI-AP 724927 23285 4 -8.0 NAP 37.693 -121.814 119 Csb 1.00
@rem call mkncdc6 ISH2017\USA 2017 CA_OAKLAND-METRO-AP 724930 23230 4 -8.0 NAP 37.721 -122.221 1 Csb 1.09
@rem call mkncdc6 ISH2017\USA 2017 CA_PALO-ALTO-AP 724937 23289 4 -8.0 NAP 37.467 -122.117 2 Csb 1.05
@rem call mkncdc6 ISH2017\USA 2017 CA_SAN-CARLOS-AP 724938 93231 4 -8.0 NAP 37.517 -122.250 1 Csb 1.05
@rem call mkncdc6 ISH2017\USA 2017 CA_SAN-FRANCISCO-IAP 724940 23234 4 -8.0 NAP 37.620 -122.365 2 Csb 1.11
@rem call mkncdc6 ISH2017\USA 2017 CA_SAN-JOSE-IAP 724945 23293 4 -8.0 NAP 37.359 -121.924 15 Csb 1.06
@rem call mkncdc6 ISH2017\USA 2017 CA_SAN-JOSE-REID-HILLV 724946 93232 4 -8.0 NAP 37.333 -121.817 40 Csb 1.04

```

Figure 11 is a simplified flow chart showing the steps invoked by *mkncdc3.bat* to go from the raw ISD data files at the top to the completed historical year weather file in three formats at the bottom.² The "main path" shown on the left part of Figure 11 are the procedural steps used to process all the weather files. The items shown on the right with dashed lines indicate additional steps there were used to process a small percentage of the weather files.

The following descriptions of the awk scripts or Fortran program used in the main path shown in Figure 11 explains briefly their functions and capabilities.

5.1a readfil6.awk is an awk script the deciphers the raw ISD file, converts from GMT to local time, and prints out the climatic parameters of interest in a new file. Since the ISD files are stored in GMT, *readfil6.awk* also reads the last 24 records from the previous year and the first 24 records of the following year in order to capture the entire year in local time, as well as to allow data filling for missing hours at the beginning and end of each year. Figure 12 shows the first 24 lines of the intermediate file for Sacramento Executive Airport 2017 generated by *readfil6* from reading the raw ISD file. The data are essentially unchanged but put in a more readable form with blanks as separators, and the time stamp has been changed from GMT to local standard time.

² This batch script does not include the insertion of the satellite-derived solar radiation, nor does it include the selection of the "typical months" and creation of the final CZ2018 or CALEE2018 "typical year" weather files. That is a different procedure which will be described later in Section 6).

Figure 11. Flow chart of processing ISD weather files

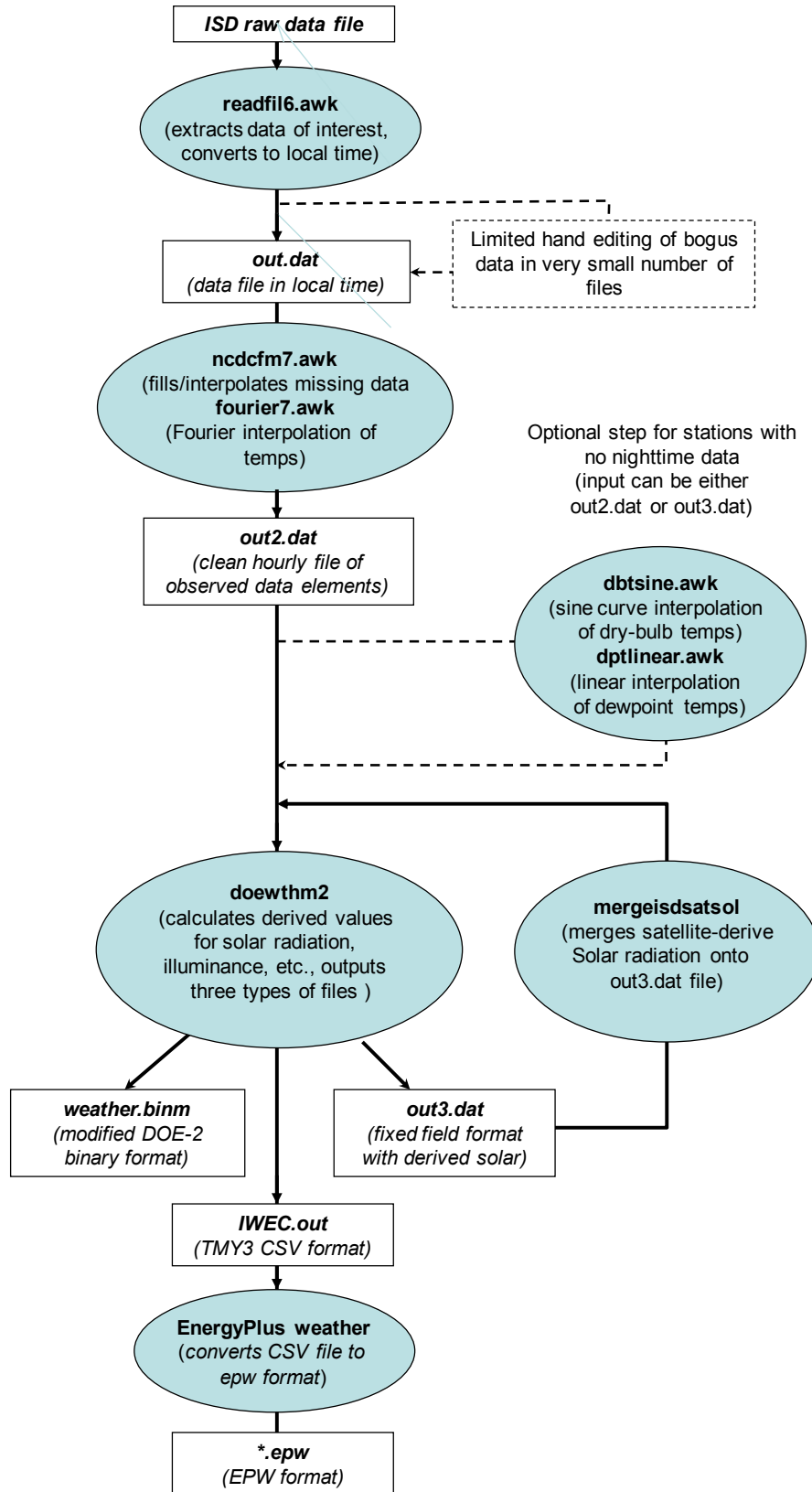


Figure 12. Sample intermediate format file produced by *readfil6.awk* for Sacramento Executive Airport WMO 724830 - first 24 records of 2017

```

724830 201612312353 +0050 +0033 10136 0026 140 99 99 99 016093 22000 9999 999 1 01000095
724830 201701010053 +0056 +0044 10135 0046 140 99 99 99 016093 22000 9999 999 1 01000095
724830 201701010059 +9999 +9999 99999 9999 999 99 99 99 999999 99999 9999 999 1 24000395
724830 201701010153 +0067 +0050 10132 0051 140 99 99 99 016093 00549 9999 999 1 01000095
724830 201701010253 +0067 +0050 10142 0031 150 99 99 99 016093 00549 9999 999 1 01000095
724830 201701010353 +0061 +0050 10136 0041 140 99 99 99 016093 00671 9999 999 2 01000095 2400039
724830 201701010453 +0061 +0044 10127 0036 140 99 99 99 016093 00732 9999 999 1 01000095
724830 201701010553 +0061 +0050 10132 0031 150 99 99 99 016093 00792 9999 999 1 01000095
724830 201701010653 +0061 +0050 10137 0031 140 99 99 99 016093 00853 9999 999 1 01000095
724830 201701010753 +0061 +0050 10138 0026 150 99 99 99 016093 00792 9999 999 1 01000095
724830 201701010853 +0061 +0044 10136 0036 160 99 99 99 016093 00792 9999 999 1 01000095
724830 201701010944 +0067 +0050 99999 0046 150 99 99 99 016093 00945 9999 999 0
724830 201701010951 +0070 +0050 99999 0041 150 99 99 99 016093 00762 9999 999 0
724830 201701010953 +0067 +0050 10143 0041 150 99 99 99 016093 00762 9999 999 1 01000095
724830 201701011017 +0072 +0044 99999 0036 160 99 99 99 016093 00914 9999 999 0
724830 201701011051 +0070 +0050 99999 0036 150 99 99 99 016093 00792 9999 999 0
724830 201701011053 +0072 +0050 10143 0026 160 99 99 99 016093 01006 9999 999 1 01000095
724830 201701011116 +0072 +0050 99999 0031 170 99 99 99 016093 00762 9999 999 0
724830 201701011153 +0083 +0056 10137 0026 999 99 99 99 016093 00762 9999 999 1 01000095
724830 201701011200 +0083 +0056 99999 0041 190 99 99 99 016093 01036 9999 999 0
724830 201701011210 +0083 +0056 99999 0021 210 99 99 99 016093 00488 9999 999 0
724830 201701011253 +0089 +0056 10128 0036 190 99 99 99 016093 00549 9999 999 1 01000095
724830 201701011353 +0094 +0056 10124 0036 190 99 99 99 016093 00762 9999 999 1 01000095
724830 201701011401 +0094 +0056 99999 0031 200 99 99 99 016093 00945 9999 999 0

```

5.1b *ncdcfm7.awk* is the main awk script with over 900 lines that reads the intermediate output file from *readfil6.awk*, and processes all the observed climatic data elements by filling in the missing data, throwing out redundant or sub-hourly data, and adding single-letter flags to each interpolated element. The methodologies for interpolating missing data elements are described previously in Section 4.1. The algorithms used in *ncdcfm7.awk* to process the different climatic data elements are all similar, apart from that for liquid precipitation or rainfall. For the other elements, *ncdcfm7.awk* keeps track of the last available value, the interpolation period, and the current value. Depending on the data filling method chosen for that element, *ncdcfm7.awk* calculates the interpolated value for each missing hour and stores it in an array, along with a single-letter flag appended directly after the value. To illustrate the general method for data-filling, Figure 13 shows how *ncdcfm7.awk* handles wind speed, one of the simplest elements to process.

Figure 13. Excerpt from *ncdcfm7.awk* for processing wind speed

```

# WIND SPEED
if (wspd !~/9999/)
{
  wspd = wspd/10
  if (lastwspd == 999) lastwspd = wspd
  wspdinter = hrofy - lastwspdtime
  wspdrecords = int(hrofy) - int(lastwspdtime)
  if (wspdrecords > 0)
  for (i=1;i<=wspdrecords;i++)
  {
    residual = i + int(lastwspdtime)-lastwspdtime
    iwspd = lastwspd + (wspd - lastwspd)*(residual/wspdinter)
    itime = lastwspdtime + residual
    if (itime > 0 && itime <= tothrs )
    {
      xwspdinter[int(itime)]=wspdinter
      xwspdrecords[int(itime)]=wspdrecords
      xiwspd[int(itime)]=iwspd
    }
  }
  if (itime > 0 && itime <= tothrs )
  {
    if (i < wspdrecords)
      xwspdflag[int(itime)]="L"
    else
      xwspdflag[int(itime)]=" "
  }
}
lastwspd= wspd
lastwspdtime = hrofy
}

```

The output from *ncdcfm7.awk* is another intermediate text file of standard length (either 8760 hours or 8784 hours for leap years) with all climatic parameters filled in, but no solar radiation data. The format of this intermediate text file

is identical to that of the OUT2.DAT and OUT3.DAT files mentioned in the next two steps, which only refine the filled temperature values and add the derived solar. It should be pointed out that *ncdcfm7.awk* and *doewth2* form the core of the weather processing method first developed by the PI in 2006, and which has been continually refined and used in all subsequent projects to create weather files.

5.1c. *fourier7.awk* is an awk script that reads the intermediate output from *ncdcfm7.awk* and replaces any linearly interpolated dry-bulb and dew point temperature between the hours of 6 and 19 with a Fourier Series. The output file is called OUT2.DAT and contains all the information of the final weather file, except for the solar radiation. Figure 14 shows a sample OUT2.DAT file for Sacramento Executive Airport corresponding to the intermediate data shown in Figure 12. Because the raw data is so complete, the only interpolated values in Figure 14 are those for Hour 16 or 4:00 pm. The interpolated values are identified by a single appended letter, L for linear interpolation, F for Fourier interpolation, R for repeat of the last available value, and X for missing value.

Figure 14. Sample OUT2.DAT file produced by *ncdcfm7.awk* and *fourier7.awk* for Sacramento Executive Airport WMO 724830 January 1, 2017

CA_SACRAMENTO-EXECUTIVE-AP				724830	38.507	-121.495	4	4	-8.0	NAP	Csa							
Year	Mo	Dy	Hr	DBT (C)	DPT (C)	Press (mb)	Altim (inHg)	Sky Cov	Opq (m/s)	WSpd Dir	Wnd (W/m2)	TotSol (W/m2)	DirNorm	Pres	Wth	Rain	Visib	Ceill
2017	1	1	1	5.7	4.5	1013.0		5R	99R	4.7	140				05R	0R	16093	22000
2017	1	1	2	6.7	5.0	1012.8		5R	99R	4.9	140				05R	0R	16093	549
2017	1	1	3	6.6	5.0	1013.6		5R	99R	3.2	150				05R	0F	16093	563
2017	1	1	4	6.1	4.9	1013.0		5R	99R	4.0	140				05R	0R	16093	678
2017	1	1	5	6.1	4.5	1012.3		5R	99R	3.5	140				05R	0R	16093	739
2017	1	1	6	6.1	5.0	1012.8		5R	99R	3.1	150				05R	0R	16093	799
2017	1	1	7	6.1	5.0	1013.2		5R	99R	3.0	140				05R	0R	16093	845
2017	1	1	8	6.1	4.9	1013.3		5R	99R	2.7	150				05R	0R	16093	792
2017	1	1	9	6.2	4.5	1013.2		5R	99R	3.7	160				05R	0R	16093	813
2017	1	1	10	6.8	4.8	1013.8		5R	99R	4.0	150				05R	0R	16093	806
2017	1	1	11	7.2	5.0	1013.7		5R	99R	2.8	160				05R	0R	16093	931
2017	1	1	12	8.3	5.6	1013.1		5R	99R	4.1	190				05R	0R	16093	1036
2017	1	1	13	9.0	5.6	1012.3		5R	99R	3.6	190				05R	0R	16093	573
2017	1	1	14	9.4	5.6	1011.9		5	99R	3.2	200				05R	0R	16093	922
2017	1	1	15	9.9	5.4	1011.5		4	99R	3.5	180				05R	0N	16093	22000
2017	1	1	16	9.4L	3.8L	1011.3L		0L	99R	3.0L	200R				05R	0R	16093L	22000R
2017	1	1	17	9.1	3.3	1011.3		0	99R	2.5	160				05R	0R	16093	22000
2017	1	1	18	9.0	2.7	1011.3		0L	99R	2.2	160				05R	0R	16093	22000
2017	1	1	19	9.2	1.8	1011.5		0	99R	3.0	190				05R	0R	16093	2134
2017	1	1	20	7.7	2.9	1011.7		0L	99R	2.8	180				05R	0R	16093	22000
2017	1	1	21	7.1	3.3	1012.5		0L	99R	4.0	200				05R	0R	16093	2303
2017	1	1	22	6.7	3.3	1013.1		0L	99R	3.8	190				05R	0R	16093	2438
2017	1	1	23	6.7	3.3	1013.9		0L	99R	4.9	220				05R	0F	16093	2438
2017	1	1	24	6.6	3.2	1013.9		0	99R	3.4	200				05R	0F	16093	2438

5.1d. *doewthm2* is a heavily modified version of the DOE-2 weather processor, which is written in Fortran 77. It reads the OUT2.DAT file from the previous step, and derives the total global horizontal, direct normal, and diffuse horizontal solar radiation using the Zhang-Huang Model (Zhang, Huang, and Lang 2002), as well as the other derived climatic elements of extraterrestrial solar radiation (total horizontal and direct normal), illuminance (global horizontal, direct, and diffuse), and zenith luminance. If satellite-derived solar radiation is available, these modeled solar radiation values are replaced, and *doewthm2* is rerun to calculate the illuminances and produce the other two output files mentioned below.

doewthm2 produces three outputs files: (1) OUT3.DAT in the same text format as in OUT2.DAT (referred to by the project team as *.FIN4 (meaning “final”) format, (2) IWEC.OUT, another text file in the TMY3 CSV format and (3) WEATHER.BINM, a binary format that is an enhanced version of DOE-2’s *.BIN packed weather file format.³ Figure 15 shows the final OUT3.DAT appearance for the same Sacramento Executive Airport 2017 file shown in Figure 14 where the modeled solar has been replaced by the satellite-derived solar radiation.

³ The BINM format was developed by the PI for the ASHRAE IWEC2 project. It is an extension of the BIN format used by DOE-2. To reduce file size, the BIN format records temperatures in integer F, pressures in inches of mercury to one decimal point, and solar radiation in integer BTU/ft²-hr. The BINM format increases the precision of the following climate variables by one significant place: dry-bulb temperature, wet bulb temperature, pressure, total solar radiation, and direct normal solar. To maintain backwards compatibility, this was done by adding additional integers at the end of each record.

Figure 15. Sample OUT3.DAT file produced by *doewthm2* for Sacramento Executive Airport 24830 January 1, 2017 (same format as OUT2.DAT with satellite-derived solar radiation)

CA_SACRAMENTO-EXECUTIVE-AP				724830S	38.507	-121.495	4	4	-8.0	NAP	Csa							
Year	Mo	Dy	Hr	DBT (C)	DPT (C)	Press (mb)	Altim (inHg)	Sky Cov	Opq Cov	WSpd (m/s)	Wnd Dir	SatGHI (W/m2)	SatDNI (W/m2)	Pres Wth	Rain	Visib	Ceill	SolarZ
2017	1	1	1	5.7	4.5	1013.0		5R	99R	4.7	140	0.0	0.0	5R	0R	16093	22000	0.0000
2017	1	1	2	6.7	5.0	1012.8		5R	99R	4.9	140	0.0	0.0	5R	0R	16093	549	0.0000
2017	1	1	3	6.6	5.0	1013.6		5R	99R	3.2	150	0.0	0.0	5R	0F	16093	563	0.0000
2017	1	1	4	6.1	4.9	1013.0		5R	99R	4.0	140	0.0	0.0	5R	0R	16093	678	0.0000
2017	1	1	5	6.1	4.5	1012.3		5R	99R	3.5	140	0.0	0.0	5R	0R	16093	739	0.0000
2017	1	1	6	6.1	5.0	1012.8		5R	99R	3.1	150	0.0	0.0	5R	0R	16093	799	0.0000
2017	1	1	7	6.1	5.0	1013.2		5R	99R	3.0	140	0.0	0.0	5R	0R	16093	845	0.0000
2017	1	1	8	6.1	4.9	1013.3		5R	99R	2.7	150	15.0	66.0	5R	0R	16093	792	0.0243
2017	1	1	9	6.2	4.5	1013.2		5R	99R	3.7	160	136.0	442.0	5R	0R	16093	813	0.1696
2017	1	1	10	6.8	4.8	1013.8		5R	99R	4.0	150	86.5	148.5	5R	0R	16093	806	0.3059
2017	1	1	11	7.2	5.0	1013.7		5R	99R	2.8	160	59.8	0.0	5R	0R	16093	931	0.4057
2017	1	1	12	8.3	5.6	1013.1		5R	99R	4.1	190	224.3	114.0	5R	0R	16093	1036	0.4616
2017	1	1	13	9.0	5.6	1012.3		5R	99R	3.6	190	148.0	13.0	5R	0R	16093	573	0.4696
2017	1	1	14	9.4	5.6	1011.9		5	99R	3.2	200	109.0	0.0	5R	0R	16093	922	0.4293
2017	1	1	15	9.9	5.4	1011.5		4	99R	3.5	180	131.8	160.8	5R	0N	16093	22000	0.3433
2017	1	1	16	9.6F	4.3F	1011.3L		0L	99R	3.0L	200R	185.5	541.3	5R	0R	16093L	22000R	0.2179
2017	1	1	17	9.1	3.3	1011.3		0	99R	2.5	160	46.3	204.5	5R	0R	16093	22000	0.0697
2017	1	1	18	9.0	2.7	1011.3		0L	99R	2.2	160	0.0	0.0	5R	0R	16093	22000	0.0000
2017	1	1	19	9.2	1.8	1011.5		0	99R	3.0	190	0.0	0.0	5R	0R	16093	2134	0.0000
2017	1	1	20	7.7	2.9	1011.7		0L	99R	2.8	180	0.0	0.0	5R	0R	16093	22000	0.0000
2017	1	1	21	7.1	3.3	1012.5		0L	99R	4.0	200	0.0	0.0	5R	0R	16093	2303	0.0000
2017	1	1	22	6.7	3.3	1013.1		0L	99R	3.8	190	0.0	0.0	5R	0R	16093	2438	0.0000
2017	1	1	23	6.7	3.3	1013.9		0L	99R	4.9	220	0.0	0.0	5R	0F	16093	2438	0.0000
2017	1	1	24	6.6	3.2	1013.9		0	99R	3.4	200	0.0	0.0	5R	0F	16093	2438	0.0000

6. WEATHER FILE NAMES

The ISD, as well as many previous weather data sets, e.g., IWEC and TMY3, used only station WMO numbers as their file names. For example, 724830-23232-2017 is the ISD file for Sacramento Executive Airport, 037760.IW2 is the IWEC file for London Gatwick, and 725033TY.CSV is the TMY3 file for New York Central Park. The weather file names in this project follows previous efforts by the PI to combine legibility with precision. The file names use two underscores ("_") to separate the two-letter state abbreviation adopted by the US Postal Service in 1963 from the location name, the station's WMO number, and finally the last two digits of the year or the name of the "typical year" set, e.g., CZ2018 or CALEE2018. All blank spaces and special characters in the location name are replaced by hyphens, and a period (".") is used only once as the separator to the file extension. For example, the name of the 2017 Sacramento Executive Airport file is CA_SACRAMENTO-EXECUTIVE-AIRPORT_724830_17.[extension]. The extension refers to the format of the file, i.e., *.FIN4, *.CSV, *.epw, or *.BINM.

7. WEATHER FILE FORMATS

The archival versions of the weather files are all in the *.FIN4 format, which the PI prefers because it's a fixed-field format that's easy to read in any text editor, with self-describing column headings and data flags. Line 1 contains the header information on the weather station: Station Name, WMO Station Number, Latitude (N+, S-), Longitude (E+, W-), Elevation (m), WMO region number, Time Zone, ISO-3166 3-letter Country Code, and Köppen climate classification. Lines 2 and 3 contain the column headings, from left to right: Year, Month, Day, Hour, Dry-bulb Temperature (C), Dew Point Temperature (C), Pressure (mb), Sky Cover (tenths), Opaque Cover (tenths), Wind Speed (m/s), Wind Direction (degrees), Global Horizontal (W/m²), Direct Normal (W/m²), Present Weather, Rainfall (0.1mm), Visibility (m), Ceiling Height (m), and SolarZ. For all the recorded parameters, i.e., everything but the solar radiation, there are optional single capital letter flags to indicate that the value is interpolated (L = linear, F = Fourier Series, R = repeat last available value, etc.). The column widths can be found in this following Fortran write statement:

```
WRITE (IOUT3, 5001) KYR, IM, KDOM, KHR, XDB, DBFLAG, XDP,
. DPFLAG, XPRESS, PRSFLAG, KCOV, COVFLAG, KOPQ, OPQFLAG, XWNDSP,
. WSPDFLAG, KWNDIR, WDIRFLAG, KSOL, KDN, IPRSWTH, PWTHFLAG,
. KRAIN, RAINFLAG, IVISIB, VISBFLAG, ICEIL, CEILFLAG, COSZAV
5001 FORMAT (I4, 1X, I2, 1X, I2, 1X, I2, 1X, F5.1, A1, 1X, F6.1, A1, 1X, F6.1,
. A1, 8X, I2, A1, 1X, I2, A1, 1X, F4.1, A1, 1X, I3, A1, 1X, F6.1,
. 2X, F6.1, 1X, I3, A1, 1X, I4, A1, 1X, I6, A1, 1X, I6, A1, 1X, F6.4)
```

There is an Excel template file to import a *.FIN4 file into Excel that correctly parses the data columns between values and the flags available at <http://www.whiteboxtechnologies.com/UTIL/Fin4toExcel.xlsm>. Users who prefer a TMY3-compatible CSV format can obtain them from White Box Technologies by e-mailing support@whiteboxtechnologies.com. This CSV format is described in the Appendix to this report.

For general users, the weather files have been written into *.epw and *.BINM formats and uploaded to the <http://www.calmac.org/weather.asp> website for public download. The *.epw format was developed for the *EnergyPlus* program, but it can also be read by some other programs. Information on the *.epw format can be found in the documentation for *EnergyPlus*. The *.BINM format is compatible with the *.BIN format developed for the *DOE-2* program. The *.BIN and *.BINM are binary file formats that are not directly readable, but there are programs such as Elements (<https://bigladdersoftware.com/projects/elements/downloads.html>) that can convert files to readable txt.

8. SELECTION OF CALIFORNIA LOCATIONS

The period of record and the completeness of the climatic data elements are used as criteria to determine whether a station has enough data for creating a CALEE2018 or CZ2018 weather file. The overall periods of record considered for all stations are the 12 years from 2006 to 2017 for CALEE2018 and the 20 years from 1998 to 2017 for CZ2018. Out of that period of record, a station must have at least seven years of usable data, defined as those years with an average of at least 4 recordings per day for dry-bulb and dew point temperatures, cloud cover, and wind speed. Furthermore, to insure uniformity in the recordings over time, each month must have at least 124 recordings.

A total of 117 weather stations were found to meet these criteria. When the ISD data are inspected in more detail, the stations are found to fall into three distinct types: A) those with hourly or sub-hourly data, B) those with hourly data only during daytime hours, or C) those with data every six hours. Of the 117 weather stations, 107 fall in the “A” category, 9 fall in the “B” category, and only one falls in the “C” category.

Figure 16 is a sketch map of California showing the location of all 117 weather stations. Table 1 lists the 117 stations with their header information (station name, WMO number, latitude, longitude, and elevation) as well as the metadata on their data class (A, B, or C), number of available years, and average number of observations per day for the three key parameters of dry-bulb temperature, dew point temperature, and wind speed. The statistics file also has metadata on cloud cover, but since the files use satellite-derived solar radiation, the metadata on cloud cover are ignored. Since 91% of the weather files have full hourly data, and 90% of these have the complete record of years (12 for CALEE2018 and 20 for CZ2018), the raw data should be considered very complete, with the exception of some anomalies for a few stations and years.

Figure 16. Locations for CALEE2018 and CZ2018 weather files

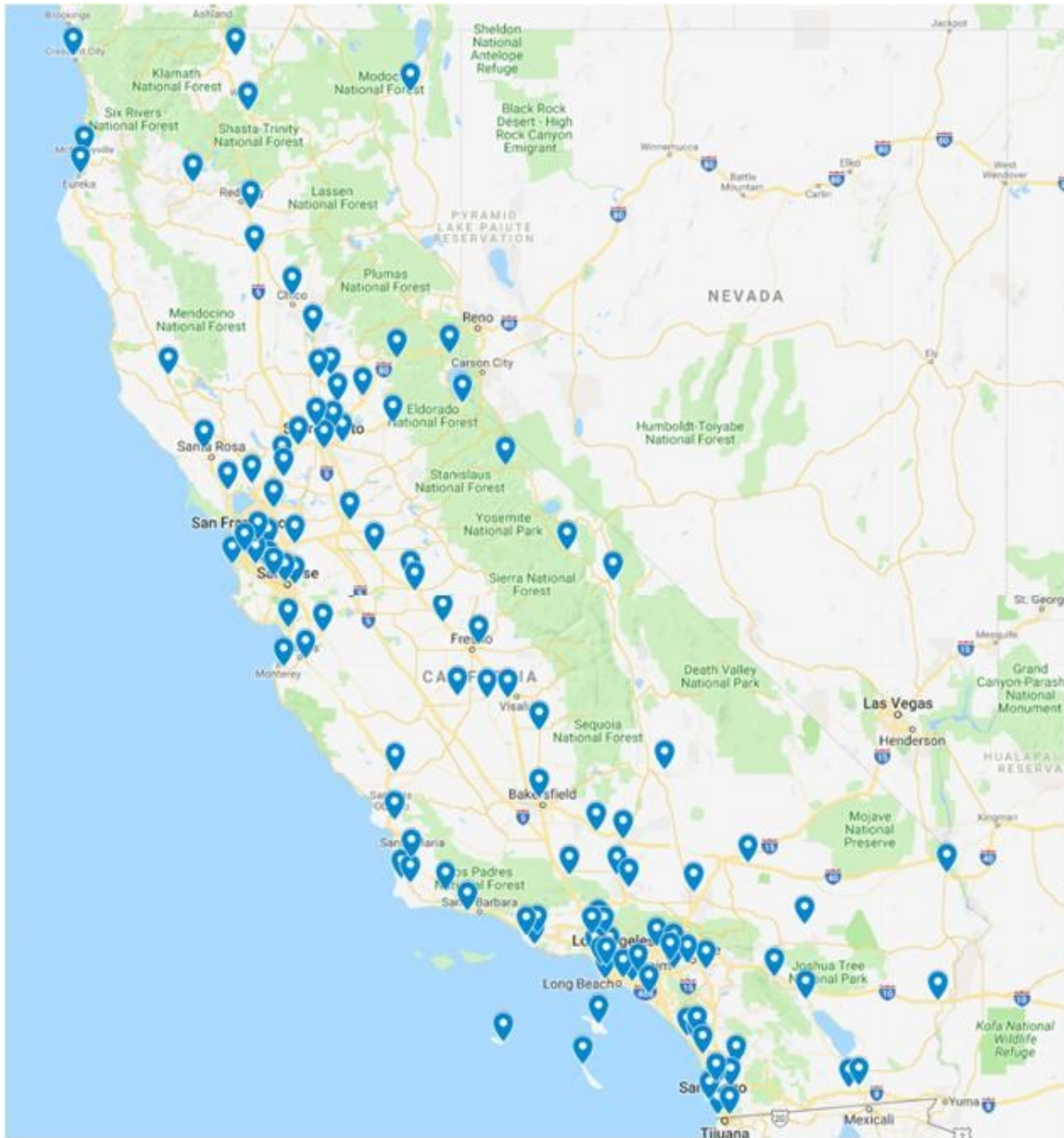


Table 1. List of CALEE2018 and CZ2018 weather files

City	Station name	WMO	Elev			CALEE2018			CZ2018		
			Lat (N)	Lon (W)	(m)	Data Class	No. Years	No. obs/day	Data Class	No. Years	No. obs/day
Alturas	ALTURAS	725958	41.483	120.567	1330	A	12	23.0	A	20	23.6
Arcata-AP	ARCATA-AP	725945	40.978	124.109	64	A	12	22.7	A	20	23.5
Auburn-Muni-AP	AUBURN-MUNI-AP	720267	38.955	121.082	466	A	12	22.4	A	13	23.1
Bakersfield-Meadows-Field	BAKERSFIELD-MEADOWS-FLD	723840	35.434	119.054	149	A	12	23.5	A	20	24.5
Bishop-AP	BISHOP-AP	724800	37.373	118.363	1263	A	12	23.4	A	20	23.7
Blue-Canyon-AP	BLUE-CANYON-AP	725845	39.292	120.708	1610	A	12	22.6	A	20	23.5
Blythe-Riverside-Co-AP	BLYTHE-RIVERSIDE-CO-AP	747188	33.619	114.717	119	A	12	22.7	A	20	23.8
Burbank-Glendale-Pasadena-AP	BURBANK-GLNDLE-PASAD-AP	722880	34.201	118.359	223	A	12	22.4	A	17	23.4
Camarillo-AP	CAMARILLO(AWOS)	723926	34.217	119.083	23	A	12	22.8	A	20	23.8
Camp-Pendleton-MCAS	CAMP-PENDLETON-MCAS	722926	33.300	117.350	23	A	12	21.4	A	20	22.7
Carlsbad-McClellan	CARLSBAD-MCCLELLAN	722927	33.128	117.279	100	A	12	22.6	A	20	23.6
Chico-Muni-AP	CHICO-MUNI-AP	724973	39.795	121.858	72	A	9	21.0			
China-Lake-NAF	CHINA-LAKE-NAF	746120	35.683	117.683	695	A	12	22.1	A	20	19.3
Chino-AP	CHINO-AIRPORT	722899	33.975	117.636	207	A	12	22.4	A	20	23.5
Concord-Buchanan-Field	BUCHANAN-FIELD-AP	724950	37.992	122.055	5	A	12	22.7	A	20	23.5
Corona-Muni-AP	CORONA-MUNI-ARPT	720333	33.900	117.600	163	A	12	21.8			
Crescent-City-Faa-AP	CRESCENT-CITY-FAA-AP	725946	41.780	124.237	16	A	12	22.9	A	18	23.7
Daggett-Barstow-AP	DAGGETT-BARSTOW-DAGGETT-AP	723815	34.854	116.787	588	A	12	22.4	A	20	23.5
Davis-AP	DAVIS	720576	38.533	121.783	21	A	8	22.0			
El-Centro-NAF	EL-CENTRO-NAF	722810	32.817	115.683	-12	A	12	22.4	A	20	19.4
Eureka	EUREKA	725940	40.800	124.150	18	C	12	3.8	C	20	3.8
Fairfield-Travis-AF	TRAVIS-FLD-AFB	745160	38.267	121.933	18	A	12	22.6	A	18	23.6
Fresno-Yosemite-IAP	FRESNO-YOSEMITE-IAP	723890	36.780	119.719	101	A	12	23.6	A	20	24.6
Fullerton-Muni-AP	FULLERTON-MUNI-AP	722976	33.872	117.979	29	A	12	22.6	A	20	23.6
Half-Moon-Bay-AP	HALF-MOON-BAY-AIRPOR	720646	37.517	122.500	20	A	8	21.6			
Hanford-Muni-AP	HANFORD-MUNI-AP	723898	36.319	119.629	75	A	12	22.4	A	18	23.2
Hawthorne-Jack-Northrop-Field	JACK-NORTHROP-FLD-H	722956	33.917	118.333	20	A	12	22.7	A	20	23.6
Hayward-AP	HAYWARD-EXECUTIVE-AI	725850	37.650	122.117	19	A	12	22.6	A	20	23.5
Hollister-Muni	HOLLISTER-MUNI	749179	36.900	121.417	72	A	9	22.6			
Imperial-Beach-Ream-Field	IMPERIAL-BEACH-REAM-FLD	722909	32.567	117.117	7	A	12	20.9	B	20	18.6
Imperial	IMPERIAL	747185	32.834	115.579	-17	A	12	22.7	A	20	23.6
Kern-Co-Edwards-AFB	EDWARDS-AFB	723810	34.933	117.900	705	A	12	21.6	A	20	21.6
Kings-Co-Lemoore-Reeves-NAS	LEMOORE-REEVES-NAS	747020	36.333	119.950	71	A	12	21.6	A	20	20.8
Lincoln-Rgnl	LINCOLN-RGNL	720614	38.909	121.351	37	A	8	22.4			
Lake-Tahoe	LAKE-TAHOE	725847	38.894	119.995	1912	A	12	22.5	A	20	23.3
Lancaster-Wm-Fox-Field	LANCASTER-GEN-WM-FOX-FIELD	723816	34.741	118.219	712	A	12	22.9	A	20	23.8
Livermore-Muni-AP	LIVERMORE-MUNI-AP	724927	37.694	121.817	121	A	12	22.5	A	20	23.6
Lompoc	LOMPOC(AWOS)	722895	34.666	120.467	26	A	12	20.5	A	20	20.4
Long-Beach-Daugherty-Field	LONG-BEACH-DAUGHERTY-FLD	722970	33.828	118.163	12	A	12	23.5	A	20	24.5
Los-Alamitos-AAF	LOS-ALAMITOS-AAF	722975	33.790	118.052	10	A	12	20.9	B	18	18.9
Los-Angeles-Downtown-USC	LOS-ANGELES-DOWNTOWN-USC	722874	34.028	118.296	56	A	12	22.4	A	18	23.5
Los-Angeles-IAP	LOS-ANGELES-INTL-AP	722950	33.938	118.406	99	A	12	23.5	A	18	24.6
Los-Angeles-Whiteman-AP	WHITEMAN-AP	745057	34.259	118.413	305	B	8	9.6			
Madera-Muni-AP	MADERA-MUNI	745046	36.988	120.111	77	A	12	21.9	A	18	22.9
Mammoth-Yosemite	MAMMOTH-YOSEMITE	723894	37.457	118.838	2172	A	12	20.9	B	20	15.8
Marysville-Beale-AFB	BEALE-AFB	724837	39.136	121.436	34	A	12	22.0	A	18	19.3
Merced-Castle-AFB	MERCED-CASTLE-AFB	724810	37.383	120.567	58	A	11	19.8			
Merced-MacReady-Field	MERCED-MACREADY-FLD	724815	37.285	120.514	48	A	12	22.6	A	20	23.2
Modesto-City-Co-AP	MODESTO-CITY-CO-AP	724926	37.624	120.951	22	A	12	22.5	A	20	23.4
Mojave	MOJAVE	722953	35.059	118.152	850	B	11	17.4			
Montague-Siskiyou-Co-AP	MONTAGUE-SISKIYOU-CO-AP	725955	41.781	122.468	805	A	12	22.6	A	20	23.4
Monterey-Peninsula	MONTEREY-PENINSULA	724915	36.588	121.845	67	A	12	22.7	A	18	23.6
Mount-Shasta	MOUNT-SHASTA	725957	41.333	122.333	1077	A	12	22.9	A	18	23.7
Mountain-View-Moffett-Field	MOUNTAIN-VIEW-MOFFETT-FLD	745090	37.415	122.048	10	A	12	22.9	A	13	23.6
Napa-Co	NAPA-CO	724955	38.213	122.280	17	A	12	22.7	A	20	23.6
Needles-AP	NEEDLES-AP	723805	34.766	114.623	278	A	12	22.7	A	20	23.9
Novato-Gnoss-Field-AP	GNOSS-FIELD-AIRPORT	720406	38.150	122.550	1	A	11	21.9			
Oakland-Metro-AP	OAKLAND-METRO-AP	724930	37.755	122.221	26	A	12	22.6	A	18	23.7
Oceanside-Muni-AP	OCEANSIDE-MUNI-AP	722934	33.219	117.349	8	A	12	22.7	A	18	23.3
Ontario-IAP	ONTARIO-INTL-AP	747040	34.050	117.567	287	A	12	22.6	A	17	23.5

Table 1. List of CALEE2018 and CZ2018 weather files (cont.)

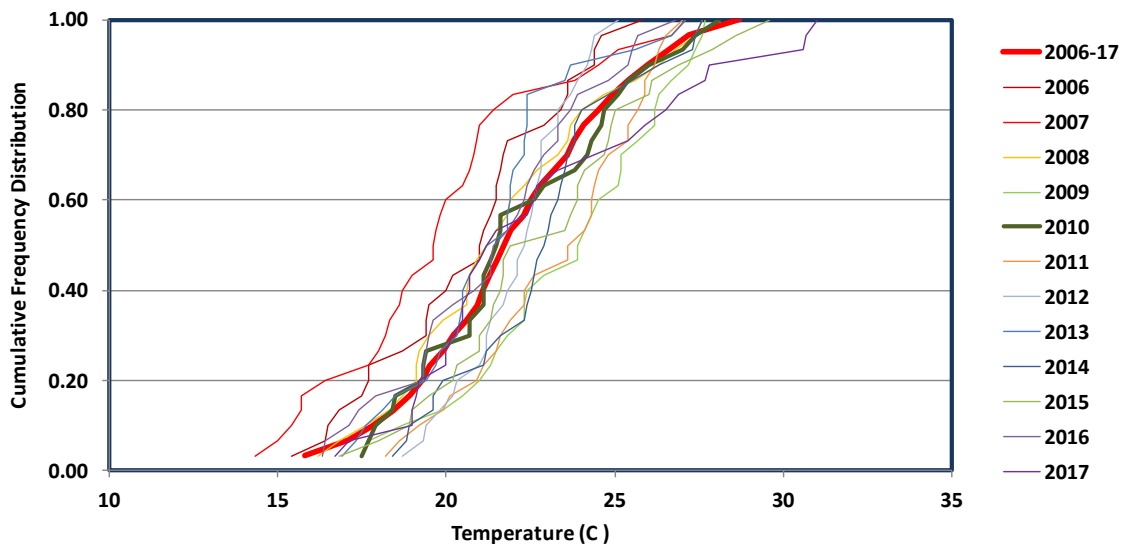
City	Station name	WMO	Elev			CALEE2018			CZ2018		
			Lat (N)	Lon (W)	(m)	Data Class	No. Years	No. obs/day	Data Class	No. Years	No. obs/day
Oroville	OROVILLE	745048	39.490	121.618	58	A	12	22.6	A	18	23.0
Oxnard-AP	OXNARD-AP	723927	34.201	119.206	20	A	12	22.6	A	20	23.5
Palm-Springs-IAP	PALM-SPRINGS-INTL	722868	33.828	116.505	137	A	12	22.4	A	20	23.6
Palm-Springs-Thermal-AP	PALM-SPRINGS-THERMAL-AP	747187	33.628	116.160	-36	A	12	22.7	A	20	23.6
Palmdale-AP	PALMDALE-AP	723820	34.629	118.084	787	A	12	22.4	A	20	23.5
Palo-Alto-AP	PALO-ALTO-AIRPORT	724937	37.461	122.115	1	B	12	12.7	B	20	14.1
Paso-Robles-Muni-AP	PASO-ROBLES-MUNICIPAL-AP	723965	35.673	120.627	249	A	12	22.7	A	20	23.6
Placerville-AP	PLACERVILLE-AIRPORT	720645	38.717	120.750	787	A	8	22.6			
Point-Mugu-Nf	POINT-MUGU-NF	723910	34.117	119.117	3	A	12	21.9	A	20	20.8
Porterville	PORTERVILLE(AWOS)	723895	36.033	119.067	135	A	12	22.6	A	20	23.3
Ramona	RAMONA	745056	33.033	116.917	424	A	12	22.5	A	18	23.4
Red-Bluff-Muni-AP	RED-BLUFF-MUNICIPAL-AP	725910	40.152	122.254	107	A	12	23.5	A	20	24.4
Redding-Muni-AP	REDDING-MUNICIPAL-AP	725920	40.515	122.313	153	A	12	23.4	A	20	24.4
Riverside-March-AFB	RIVERSIDE-MARCH-AFB	722860	33.881	117.259	467	A	12	22.9	A	20	23.6
Riverside-Muni-AP	RIVERSIDE-MUNI	722869	33.952	117.439	253	A	12	22.6	A	20	23.3
Sacramento-Executive-AP	SACRAMENTO-EXECUTIVE-AP	724830	38.513	121.493	7	A	12	22.4	A	20	23.5
Sacramento-Mather-Field	SACRAMENTO-MATHER-FL	724833	38.554	121.285	29	A	12	18.7	A	17	19.3
Sacramento-McClellan-AFB	MCCLELLAN-AFB	724836	38.667	121.400	23	A	7	22.4			
Sacramento-Metro-AP	SACRAMENTO-METRO-AP	724839	38.696	121.590	10	A	12	22.6	A	20	23.4
Salinas-Muni-AP	SALINAS-MUNI	725930	36.650	121.600	24	A	12	22.4	A	19	23.6
San-Carlos-AP	SAN-CARLOS-AP	724938	37.512	122.249	1	A	12	19.2	B	20	17.1
San-Clemente-Is-NAAS	SAN-CLEMENTE-IS-NAAS	722925	33.023	118.588	55	B	12	8.2	B	20	9.3
San-Clemente-San-Mateo-Point	SAN-MATEO-POINT	722928	33.286	117.456	27	A	8	20.4			
San-Diego-Brown-Fld-Muni-AP	BROWN-FLD-MUNI	722904	32.572	116.979	157	A	12	22.5	A	18	23.6
San-Diego-Gillespie	SAN-DIEGO-GILLESPIE	722907	32.826	116.973	118	B	12	11.6	B	15	13.0
San-Diego-IAP	SAN-DIEGO-LINDBERGH-FIELD	722900	32.735	117.169	8	A	12	23.6	A	20	24.6
San-Diego-Miramar-MCAS	MIRAMAR-MCAS	722931	32.867	117.150	146	A	12	22.8	A	15	23.3
San-Diego-Montgomery	SAN-DIEGO-MONTGOMER	722903	32.816	117.139	128	A	12	22.6	A	20	23.6
San-Diego-N-Island-NAS	SAN-DIEGO-NORTH-ISLAND-NAS	722906	32.700	117.200	7	A	12	22.4	A	20	23.1
San-Francisco-IAP	SAN-FRANCISCO-IAP	724940	37.620	122.398	5	A	12	23.6	A	20	24.5
San-Jose-IAP	SAN-JOSE-INTL-AP	724945	37.362	121.928	15	A	12	22.6	A	20	23.5
San-Jose-Reid-Hillview	SAN-JOSE-REID-HILLV	724946	37.333	121.820	40	B	12	13.0	B	20	15.0
San-Luis-Co-Rgnl-AP	SAN-LUIS-CO-RGNL	722897	35.237	120.641	63	A	12	22.7	A	20	23.7
San-Nicholas-Island	SAN-NICHOLAS-ISLAND	722910	33.240	119.458	153	B	12	11.5	B	20	14.1
Sandberg	SANDBERG	723830	34.744	118.724	1378	A	12	23.3	A	18	23.8
Santa-Ana-AP	SANTA-ANA-JOHN-WAYNE-AP	722977	33.680	117.866	16	A	12	22.5	A	20	23.5
Santa-Barbara-Muni-AP	SANTA-BARBARA-MUNICIPAL-AP	723925	34.426	119.844	6	A	12	22.5	A	14	23.6
Santa-Catalina-Catalina-AP	SANTA-CATALINA-CATALINA-AP	722920	33.405	118.416	488	A	12	22.6	A	20	23.4
Santa-Maria-Public-AP	SANTA-MARIA-PUBLIC-AP	723940	34.916	120.465	72	A	12	23.4	A	20	24.5
Santa-Monica-Muni-AP	SANTA-MONICA-MUNI	722885	34.016	118.451	53	A	12	22.6	A	20	23.6
Santa-Rosa-AP	SANTA-ROSA(AWOS)	724957	38.509	122.812	45	A	12	22.5	A	20	23.5
Santa-Ynez	SANTA-YNEZ	723762	34.607	120.076	204	A	9	21.8			
Stockton-Metro-AP	STOCKTON-METRO-AP	724920	37.889	121.226	7	A	12	23.3	A	20	24.0
Tehachapi-Muni	TEHACHAPI-MUNI	749171	35.135	118.439	1219	A	9	22.5			
Torrance-Muni-AP	TORRANCE-MUNI-AP	722955	33.800	118.333	31	B	12	11.0	B	18	12.5
Truckee-Tahoe	TRUCKEE-TAHOE	725846	39.320	120.134	1798	A	12	21.1	A	20	22.0
Twentynine-Palms	TWENTYNINE-PALMS	690150	34.300	116.167	695	A	12	21.3			
Ukiah-Muni-AP	UKIAH-MUNI-AP	725905	39.126	123.201	190	A	12	22.9	A	18	23.6
USMC-Mtn-Warfare-Train	USMC-MTN-WARFARE-TRAIN	720652	38.350	119.517	2067	A	8	21.6			
Vacaville-Nut-Tree	VACAVILLE-NUT-TREE	724828	38.377	121.961	34	A	12	22.5	A	17	23.4
Van-Nuys-AP	VAN-NUYS-AP	722886	34.210	118.489	243	A	12	22.6	A	20	23.5
Vandenberg-AFB	VANDEMBERG-AFB	723930	34.729	120.568	111	A	12	21.9	A	20	20.0
Visalia-Muni-AP	VISALIA-MUNI(AWOS)	723896	36.319	119.384	89	A	12	22.9	A	20	22.3
Victorville-George-AFB	GEORGE-AFB	723825	34.583	117.383	876	B	12	17.5			
Watsonville	WATSONVILLE	745058	36.936	121.789	48	A	12	22.6	A	18	23.6
Weaverville-L-Pool-Field	LONNIE-POOL-FLD-WEAV	720193	40.747	122.922	716	A	8	22.1			
Yuba-County	YUBA-CO	724838	39.098	-121.570	18	A	12	22.6	A	20	23.6

9. PRODUCTION OF CZ2018 AND CALEE2018 WEATHER FILES

Due to the stochastic variations in the weather, climatologists and building scientists have been developing “typical year” weather files for over 25 years with increasing sophistication. The research community has moved from using single representative years to producing synthetic weather years made up of 12 typical months, and selecting these typical months based not only on the averages, but also the cumulative distributions of various climate parameters as compared to those of the long-term multi-year record. The most widely used method of selecting typical months is the one developed by NREL to create the first TMY files in the early 1980s (NCC 1981).

The key parameter in the TMY selection procedure is the Finkelstein-Schafer (FS) statistic, which is a measure of the total difference between the Cumulative Frequency Distribution (CFD) of a climate variable in a candidate month and the long-term CFD for the same calendar months over the period of record. The FS statistics are evaluated for various climate parameters which are then given weights and summed. The month with the smallest cumulative FS is deemed to be the most representative “typical month”. In developing the original TMY, NREL evaluated the following climate parameters: maximum, average, and minimum dry-bulb and dew point temperatures, maximum and average wind speed, and daily global horizontal and direct normal solar radiation. Figure 19 is a representative plot of monthly CFDs for mean daily dry-bulb temperature in September for Sacramento Executive Airport in the 12 years from 2006 through 2017. The thick red line is the long-term CFD for the 12-year period, while the thinner lines are the CFDs for each individual year. The month of year with a CFD closest to the long-term CFD, judged by the area between the two CFDs, is selected as the “typical month”. In this example, September 2010, shown by the thick olive green line, was found to have the smallest FS statistic, and was also the “typical month” selected after all ten climate parameters were evaluated.

Figure 19. CFDs for mean daily dry-bulb temperature in September for Sacramento Executive Airport 2006-2017



Since the original TMY methodology was first developed in 1981, it has been used in subsequent efforts, such as TMY2, TMY3, and IWEC, but with changes in the selection and weighting of different climate parameters. The original TMY weightings can be expressed in simplified form as 4:4:4:12 for dry-bulb, dew point, wind speed, and solar radiation. In comparison, the TMY2 weightings are 4:4:2:10, while the IWEC weightings are 8:2:2:8. During the ASHRAE IWEC12 project (2009-2011), the PI participated in writing two papers to study the impact of different weightings on the “typical year” weather files, and concluded that (1) changing the relative weightings did not have a large effect on the resultant weather file, and (2) there was no weighting found to be clearly superior to the others (Su et al. 2009, Seo et al. 2009).

Based on the findings of these two papers, the PI adopted the fundamental TMY methodology to create “typical year” weather files, but used the same parameters and weightings adopted by NREL for the TMY2 and TMY3 weather files,

i.e., 4:4:2:10 for maximum, mean, and minimum daily dry-bulb and dew point temperature (weight of 1.33 each), maximum and mean daily wind speed (weight of 1.00 each), and total daily global horizontal and direct normal solar radiation (weight of 5.0 each).

Figure 20 shows the procedure developed to analyze the pool of historical weather files and identify the 12 typical months, extract and merge these typical months into a single file, and then process that file into the final “typical year” weather file (either CZ2018 or CALEE2018). In the first step, *dotmm2.awk* processes each historical weather file in the pool and writes the cumulative distribution of the climate parameters for that month and year to one of 120 temporary files. Figure 21 is a sample of one of these files, showing the long-term distribution for the 12 years in the pool and the distributions for each individual year of daily mean dry-bulb temperatures for September in Sacramento Executive Airport 2006-2017 (same data as plotted in Figure 19).

Figure 20. Flow chart for creating “typical year” weather files

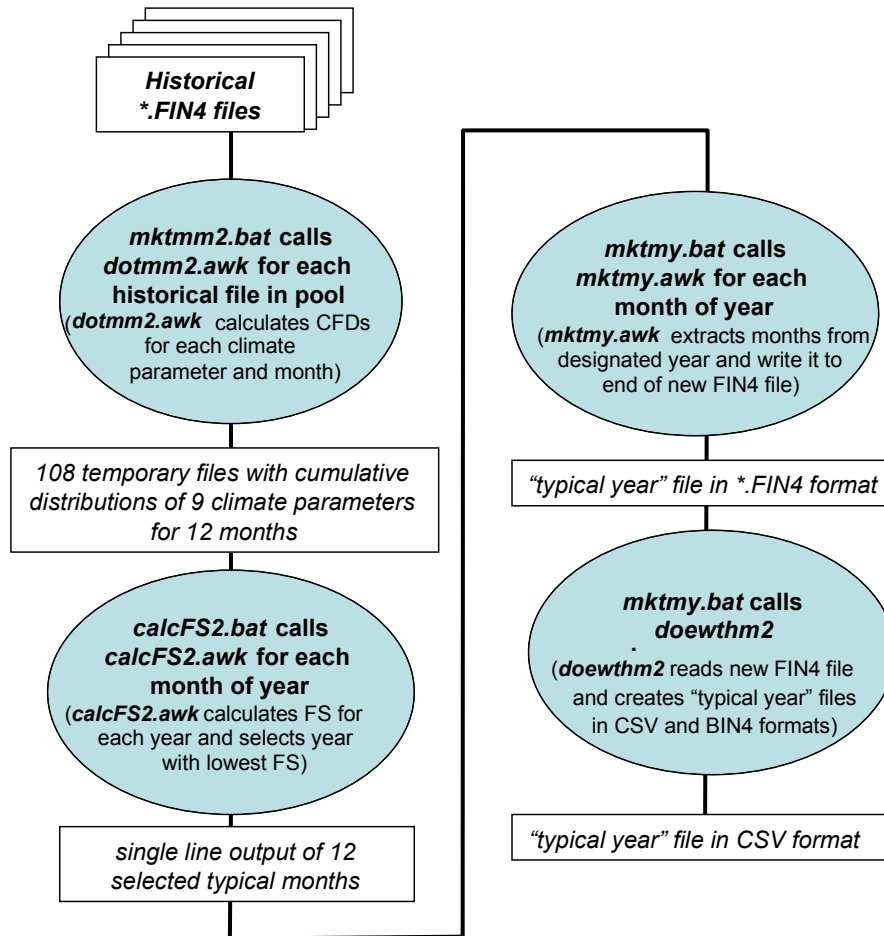


Figure 21. avdb09.FS file (CFDs of daily mean dry-bulb temperatures in September) for Sacramento Executive Airport

Ct	12yrs	06	07	08	09	10	11	12	13	14	15	16	17
1	15.8	15.4	14.3	16.2	17.5	17.5	18.2	18.7	16.9	18.4	16.8	16.3	16.7
2	17.1	16.4	15.0	16.8	17.7	17.7	18.6	19.3	17.3	18.8	18.0	16.4	17.1
3	17.8	16.5	15.4	17.6	18.7	17.9	19.2	19.4	17.6	18.9	18.9	17.1	19.0
4	18.4	16.8	15.7	18.3	19.9	18.4	19.9	19.8	18.1	19.6	19.0	17.4	19.0
5	18.9	17.5	15.7	18.7	20.5	18.5	20.1	20.2	18.5	19.6	19.5	17.9	19.1
6	19.3	17.7	16.4	19.1	21.0	19.3	20.9	20.3	19.4	19.9	20.2	19.3	19.2
7	19.5	17.7	17.7	19.1	21.3	19.3	21.1	21.0	19.7	21.1	20.3	19.3	20.0
8	19.9	18.7	18.0	19.2	21.5	19.4	21.5	21.2	19.8	21.2	21.0	19.4	20.0
9	20.2	19.4	18.2	19.5	21.8	20.7	21.6	21.2	20.3	21.6	21.0	19.5	20.2
10	20.6	19.4	18.3	19.9	22.3	20.7	21.9	21.3	20.4	22.3	21.3	19.6	20.5
11	20.9	19.5	18.6	20.6	22.3	21.1	22.3	21.7	20.5	22.4	21.4	20.2	20.5
12	21.1	20.0	18.7	20.6	22.4	21.1	22.3	21.8	20.5	22.5	21.6	20.8	20.7
13	21.3	20.2	19.0	20.7	22.9	21.1	22.6	22.1	20.7	22.6	21.7	21.3	20.7
14	21.5	21.0	19.6	20.9	23.9	21.3	23.6	22.1	21.0	22.7	21.7	21.3	21.0
15	21.7	21.0	19.6	21.2	23.9	21.5	23.6	22.3	21.2	22.9	21.9	21.4	21.2
16	21.9	21.1	19.7	21.5	24.1	21.6	24.1	22.4	21.8	23.0	23.5	21.8	21.5
17	22.3	21.3	19.8	21.8	24.3	21.6	24.3	22.5	21.8	23.1	23.7	22.1	22.4
18	22.5	21.5	20.0	21.9	24.5	22.6	24.3	22.6	21.9	23.3	23.9	22.3	22.6
19	22.8	21.5	20.5	22.3	25.1	22.9	24.4	22.7	21.9	23.4	23.9	22.4	22.7
20	23.2	21.6	20.7	22.7	25.2	23.8	24.5	22.8	22.0	23.5	24.1	22.6	23.3
21	23.6	21.7	20.8	23.3	25.2	24.2	24.8	22.8	22.3	23.6	24.7	22.9	24.4
22	23.8	21.8	20.9	23.6	25.7	24.3	25.4	22.8	22.3	23.8	24.8	23.3	25.4
23	24.1	22.9	21.0	23.7	26.2	24.6	25.4	23.3	22.4	23.8	24.9	23.3	25.9
24	24.5	23.4	21.4	24.0	26.2	24.7	25.7	23.3	22.4	24.0	25.0	23.7	26.5
25	24.9	23.6	22.0	24.7	26.3	25.1	25.9	23.7	22.4	24.8	26.0	23.9	26.9
26	25.4	23.6	23.8	25.6	26.7	25.4	25.9	23.9	23.5	25.5	26.1	24.8	27.7
27	26.0	24.4	24.5	26.3	27.2	26.0	26.2	24.2	23.7	26.3	26.9	25.4	27.8
28	26.6	24.4	25.1	26.8	27.4	27.0	26.3	24.3	25.6	27.3	27.9	25.5	30.6
29	27.2	24.6	26.7	27.4	27.6	27.4	26.5	24.4	26.7	27.4	28.6	25.7	30.7
30	28.7	25.8	27.1	27.6	27.7	28.1	27.0	25.1	27.1	27.6	29.6	26.8	31.0
cuml data=187.4 weight=0.0833333													
FS	41.3	67.5	12.6	47.4	10.1	41.9	36.6	25.2	27.4	26.2	19.0	28.9	
NrmlzWgt	0.183	0.300	0.056	0.211	0.045	0.186	0.163	0.112	0.122	0.117	0.085	0.129	

In the following step, *calcFS.awk* reads the Finkelstein-Shafer (FS) statistics for each climate parameter by year and month, weights them accordingly, and sums them to produce the overall FS by year for that month. The year with the lowest overall FS is then selected as the typical month. In Figure 22 for September in Sacramento Executive Airport, 2010 has the lowest overall FS and is selected as the “typical month”. As shown in Figure 21, 2010 also has the smallest FS for daily mean dry-bulb temperature. Such agreement between the FS for an individual parameter and the weighted sum FS often does not occur.

Figure 22. Sample table with weighted sum of FS statistics for Sacramento Executive Airport

	06	07	08	09	10	11	12	13	14	15	16	17
mxdb09	0.040	0.131	0.023	0.078	0.027	0.077	0.092	0.070	0.026	0.042	0.028	0.038
avdb09	0.183	0.300	0.056	0.211	0.045	0.186	0.163	0.112	0.122	0.117	0.085	0.129
mndb09	0.146	0.095	0.077	0.092	0.030	0.072	0.085	0.035	0.127	0.068	0.067	0.128
mxdp09	0.082	0.053	0.070	0.053	0.038	0.094	0.098	0.049	0.113	0.039	0.083	0.132
avdp09	0.141	0.054	0.112	0.067	0.097	0.184	0.179	0.089	0.220	0.106	0.129	0.210
mndp09	0.046	0.023	0.052	0.024	0.042	0.088	0.067	0.040	0.067	0.076	0.052	0.067
mxwd09	0.170	0.206	0.103	0.060	0.095	0.156	0.314	0.228	0.140	0.078	0.060	0.199
avwd09	0.218	0.116	0.118	0.103	0.083	0.152	0.264	0.220	0.130	0.119	0.097	0.151
sghi09	0.114	0.175	0.193	0.102	0.144	0.102	0.132	0.151	0.161	0.309	0.226	0.334
sdni09	0.175	0.181	0.228	0.133	0.217	0.074	0.183	0.122	0.172	0.454	0.348	0.449
Sum FSs	1.315	1.334	1.032	0.923	0.818	1.185	1.577	1.116	1.278	1.408	1.175	1.837
CA_SACRAMENTO-EXECUTIVE-AP_724830S Selected year = 10 FS = 0.818												

The next step uses *mktmy.awk* to read the historical weather files, extract the selected typical months, and concatenate them into a single “typical year” file. This is a simple procedure, with the only complication that the temperatures are smoothed between the last four hours of the preceding month and the first four hours of the following month, and between December and January, to avoid large discontinuities in the temperature. The last two steps are to run *doewthm2* to produce the alternate BINM and CSV format files and to convert the CSV file to an epw file. These steps are identical to the final steps in processing the historical files shown in Figure 11.

Exploring various formulations for CZ2018 and CALEE2018 weather files

It should be pointed out that 95% of the work in creating a “typical year” weather file is analysis, and only 5% production. Once the 12 “typical months” have been selected, concatenating them into a “typical year” is very fast and simple. During this project, a great deal of time was spent in investigating different methods for selecting the “typical months”, especially for the CZ2018 weather files for the CEC.

a. Trending

One of the limitations of the TMY selection procedure is that it doesn’t account for time dependence in the climate data. Although the procedure has been found to produce a weather file approximating the average conditions in the long-term data, there’s an implicit assumption that climate conditions are steady-state and that the typical conditions from the past will continue to be typical in the near future. Since the main interest in using “typical year” weather files is to project building energy performance in the future, not the past, it is important to keep the “typical year” weather files as current as possible.

Meteorologists choose to use 30 years to define climate normal in order to smooth out the year-by-year stochastic variations in the weather. However, when such a long period of record is used, it also runs the risk of being outdated when such effects as global climate change or localized urban heat islands have become more apparent. One way to create a more current weather data set is to move the period of record up to the latest year available, or update the weather files from 1998-2009 to 2006-2017.⁴ Even so, given the inevitable time needed for production, review, and approval of the files, and the likelihood they would be used for up to a decade hereafter, there’s still the spectre that the average age of the data would be at least a decade old or more.

To address this problem of creeping data obsolescence, WBT proposed in its original work statement to add a trend analysis in the selection of the “typical months”, which was well-received by both PG&E and the CEC. In the initial effort, WBT tracked changes in the long-term CFD from year to year, i.e., from 1998-2009 to 1999-2010 to 2000-2011, etc., and then projected what the CFD would be for the near future of 2014-2025, which would be centered around today, i.e., 2019/2020.

This approach assumes that the observed changes in the long-term CFD would continue at the same rate over the next six years, which is unverifiable and requires a leap of faith. Following a suggestion from a CEC consultant, WBT then modified the trend analysis to stay completely within the historical data. Instead of calculating the long-term CFD from all the data in the long-term record irrespective of their time, the data from the individual year CFDs are distinguished by their time (year), which then allows linear regressions across time resulting in an average value (which would be the same as the long-term CFD) as well as a time-dependent slope. To illustrate how this works, Figure 21 is a plot of the individual year CFDs where the X-axis is the year and the Y-axis is the CFD value for mean daily dry-bulb temperature in January for Fullerton from 1998 through 2017.

Although the stochastic variations in yearly CFD values may seem chaotic, the values always increase monotonically and never intersect, and doing linear regressions over time (years) result in well-behaved lines that also do not intersect (see Figure 23).

The addition of slopes to each value in the CFD makes it possible to account for trends in the historical data. The final version of the trended “typical year” data set used a 20-year period of record from 1998 to 2017, with the long-term CFD calculated for 2017, the last year of the data set. After review, the CEC decided against using this trended data set. Results from this trended “typical year” weather set are included in the following Section 10 on Results.

⁴ The historical data ends at 2017 instead of 2018 because of the absence of satellite-derived solar radiation. NREL generally releases this data about 10 months after the end of the year, meaning the 2018 solar data will not be available until October 2019. When that data is made available, WBT intends to redo the CALEE2018 weather files, although redoing the CZ2018 will depend on the CEC’s preferences.

Figure 21. Individual Year CFDs for mean daily dry-bulb temperature in January for Fullerton from 1998 through 2017
(lines indicate temperatures of the annual CFDs over the 20 years)

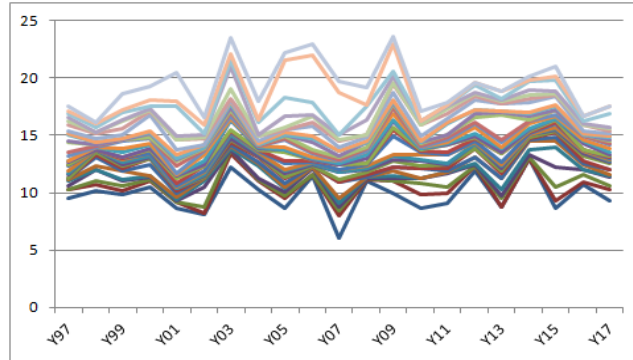
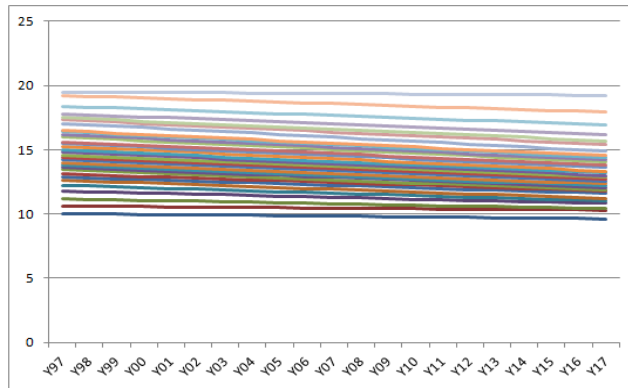


Figure 22. Linear regressions of individual year CFDs for mean daily dry-bulb temperature In January for Fullerton from 1998 through 2017
(lines indicate linear regressions of temperatures of the annual CFDs over the 20 years)



b. Statewide Typical Months

As already mentioned before in this report, the CEC wanted for the CZ2018 files a single statewide “typical year” for all locations to facilitate the calculation of Time-Dependent Valuations (TDVs), which requires knowing the concurrent weather conditions and electricity demand throughout the entire state. These statewide “typical months” were derived by taking the cumulative FS values by year for each individual location in a designated month, weighting the FS value by the population represented by that weather station, and then summing the results for stations in the state. The year with the lowest total cumulative FS value was then selected as the “typical month”.

Figure 23 uses a color-coded grid to illustrate graphically how a state-wide “typical month” is selected for a sample month of July, and the limitations of that selection. Each row contains the FS values for one location for 18 years of the period of record. The color scheme indicates the FS value from the lowest, i.e., the best fit, in dark green, to light green, yellow, orange, and red for the highest, i.e., worst fit to the long-term CFD. The column for 2013 has a black outline to indicate that it has been selected as the statewide “typical month” for July. Although this year has the highest number of dark green grids, there are also three grids shown in red and 11 grids in orange, both indicating that the selected statewide “typical month” was rather atypical for those locations.

Since the FS values are weighted by population, and Southern California contains 2/3 of the state’s population, the selected state-wide “typical months” are skewed in favour of typical climate conditions in that area. The main purpose of the CALEE2018 files is to normalize measured or modeled energy savings for weather variations. For that purpose, PG&E and the PI both agreed to use individual “typical months” that are specific to each location.

Figure 23. Selection of state-wide “typical months” for July



c. Different Periods of Record

After deciding against the use of trending, it was requested that the PI look into different lengths in the period of record from as short as seven years to as long as 20 years (all ending in 2017), with 10 and 12 years also considered. The shorter periods of record may reflect better current weather conditions, while the longer periods of record may better capture the stochastic variations in weather conditions over time. In the end, the CEC decided to use for the CZ2018 a 20-year period of record (1998-2017) with statewide “typical months”. Since the CZ2010s also started in 1998 but ended in 2009, the new CZ2018 weather files are less an update, but an appendix to the CZ2010 weather files.

The CALEE2018 weather files are essentially unchanged from the original work plan. They use location-specific “typical months” and a 12-year period of record, same as what was used for the CZ2010, but beginning in 2006 and ending in 2017. The contractor is still comparing the CALEE2018 to the 20-year trended data set to see how they differ and determine which set provides the best estimate of weather conditions over the next 5-10 years.

10. RESULTS

Based solely on the quality of the raw weather data, i.e., the ISD combined with the NSRDB, the historical weather files developed by this project is very reliable for the 107 stations in the “A” data category. The 9 stations in the “B” data category are less reliable, mainly because of missing data for the nighttime hours. The single station (Eureka) in the “C” data category is the most unreliable because the station data are reported only four times a day. The use of satellite-derived solar radiation also means that the quality of the solar data on all the files are equally accurate, although the PI noticed a significant 20-30% increase in the direct normal (beam) solar radiation in the NSRDB compared to the earlier CPR satellite-derived data used for the CZ2010.

Perhaps the questions of greatest interest about the CZ2018 and CALEE2018 weather files are how they compare to the previous CZ2010 weather set and how they compare to the historical files on which they’re based. To show these differences, climate statistics of Heating Degree Days (Base 65°F), Cooling Degree Days (Base 65°F), Annual Global Horizontal Irradiance, and Annual Direct Normal Irradiance were calculated for all the historical files as well as for the four “typical year” weather files: CZ2010, CZ2018, CZ2018TRD and CALEE2018. The spreadsheet will be available to the public by the author upon request. Figures 24-39 present the plots for the representative locations for the 16 CTZs. Each figure contains four bar charts, one for each climate statistic. The bars show, starting from the left, the value for each historical year followed by the CZ2010, CZ2018 (statewide “typical months” with a 20-year period of record from 1998-2017), CZ2018TRD (same period of record as the CZ2018 but using individual “typical months” as well as incorporating trends), and CALEE2018 (individual “typical months” with a 12-year period of record from 2006-2017).

Figure 24. Climate Statistics for CTZ01 (Arcata)

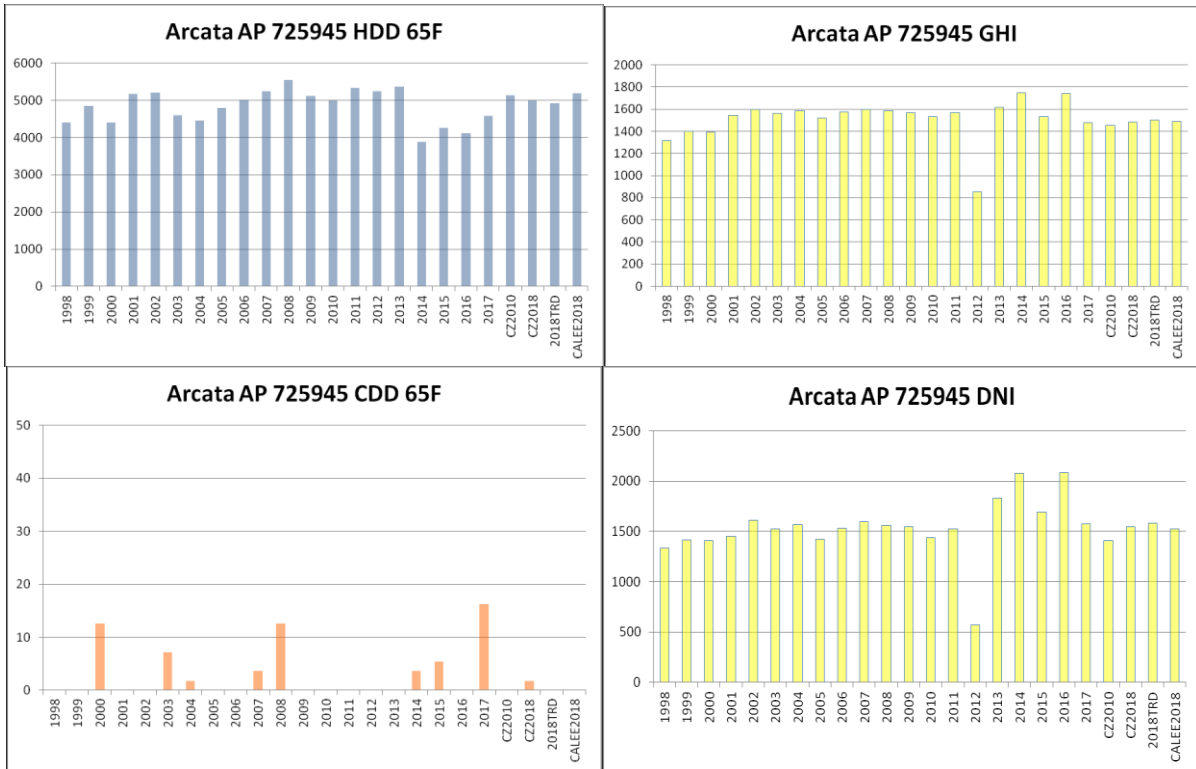


Figure 25. Climate Statistics for CTZ02 (Santa Rosa)

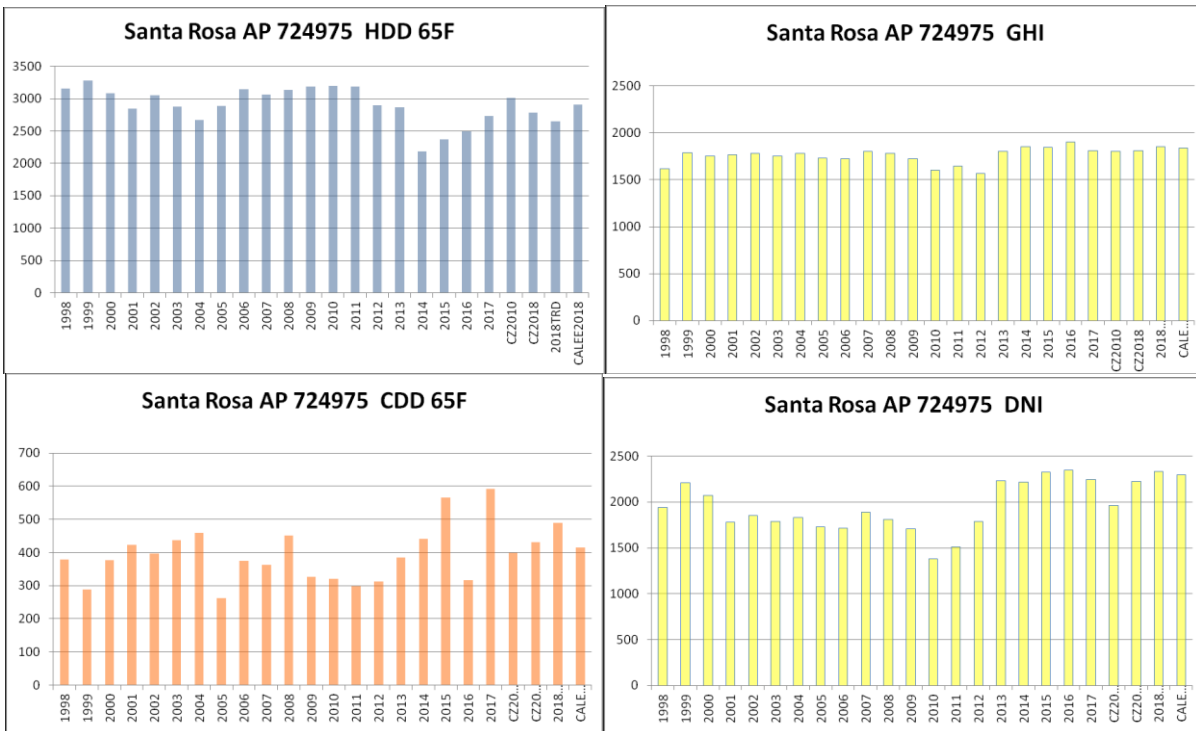


Figure 26. Climate Statistics for CTZ03 (Oakland IAP)

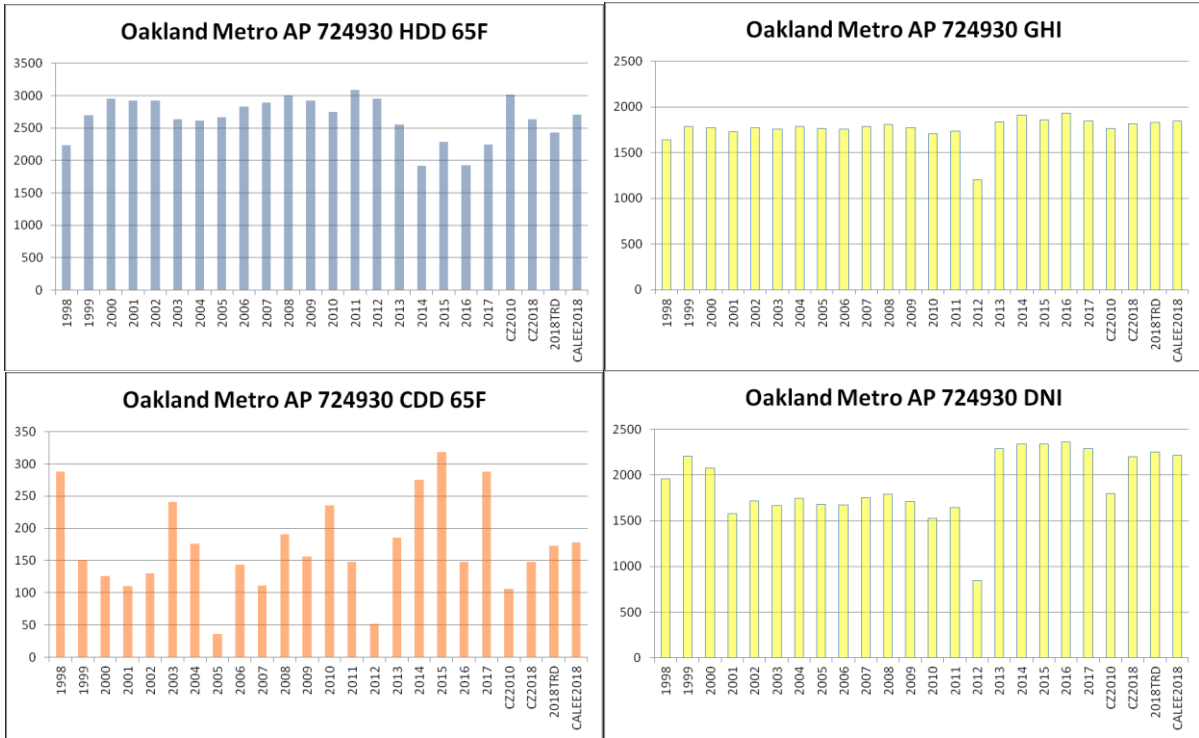


Figure 27. Climate Statistics for CTZ04 (San Jose Reid Hillvale AP)

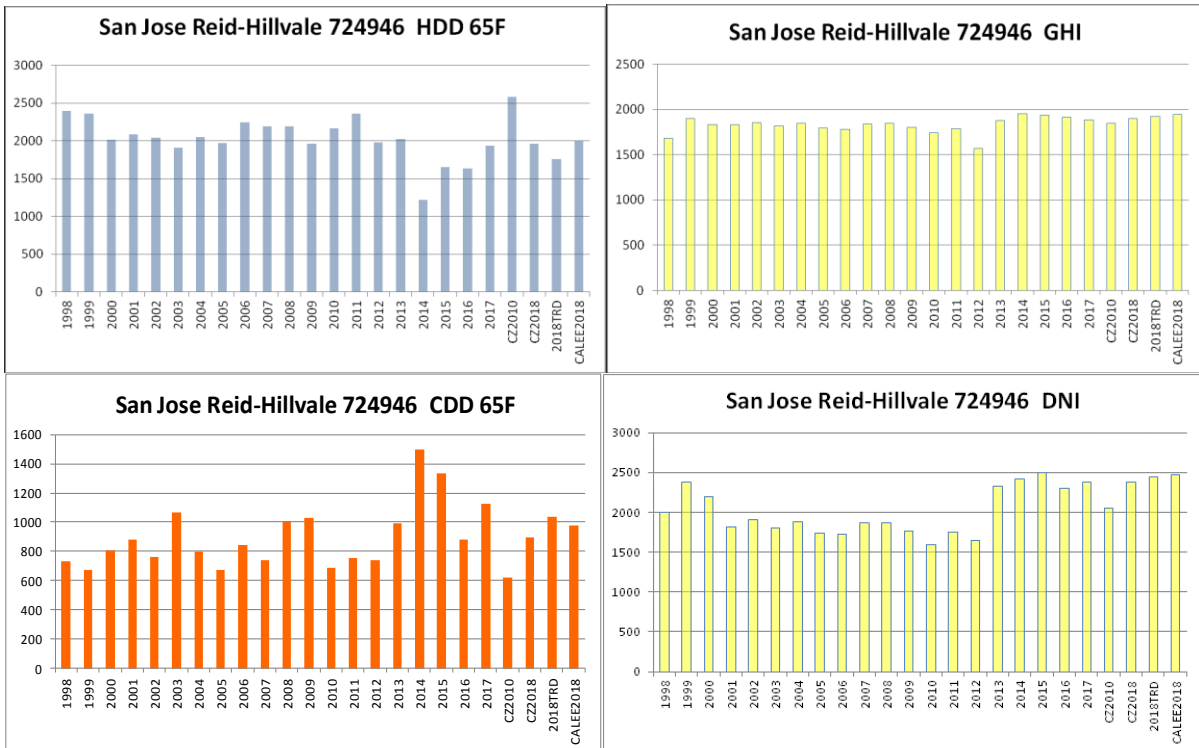


Figure 28. Climate Statistics for CTZ05 (Santa Maria)

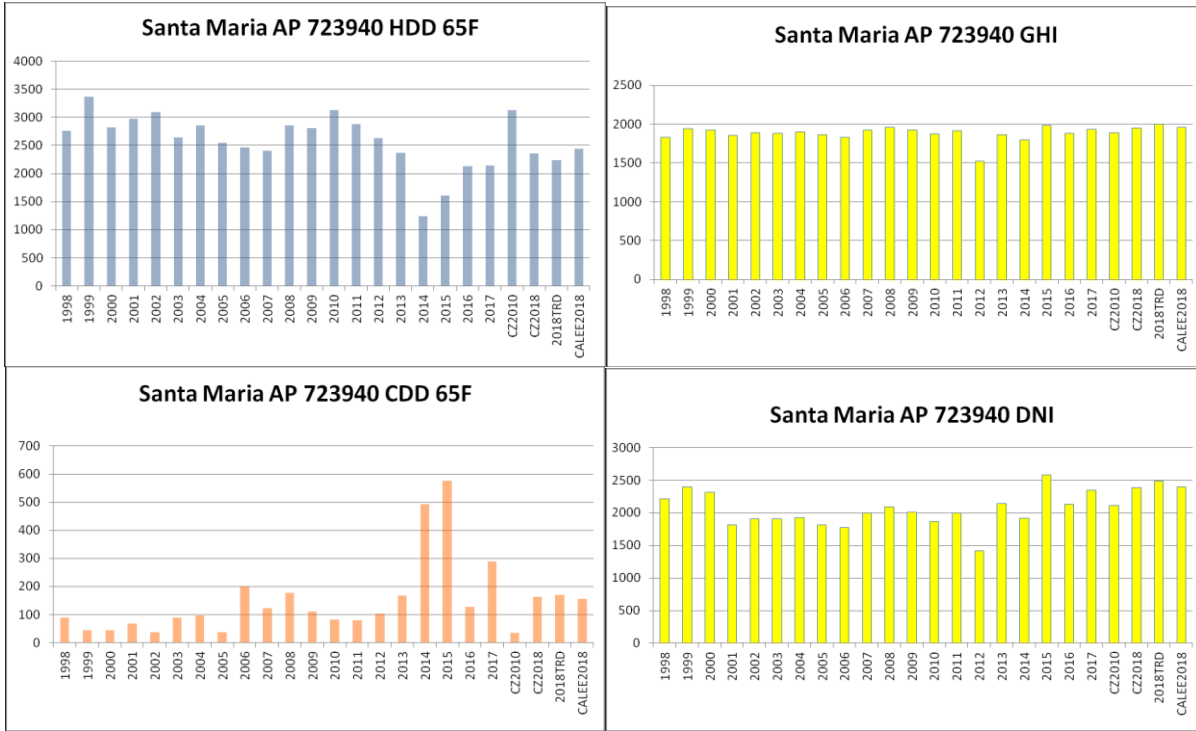


Figure 29. Climate Statistics for CTZ06 (Torrance)

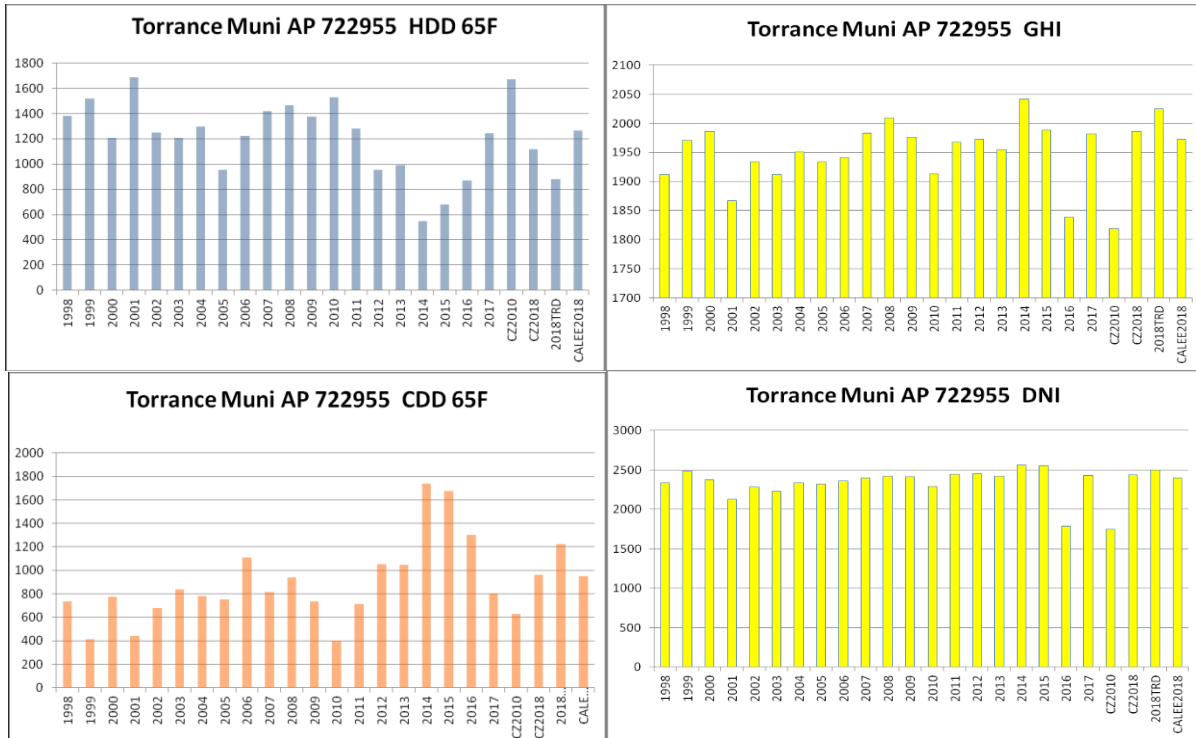


Figure 30. Climate Statistics for CTZ07 (San Diego Lindbergh)

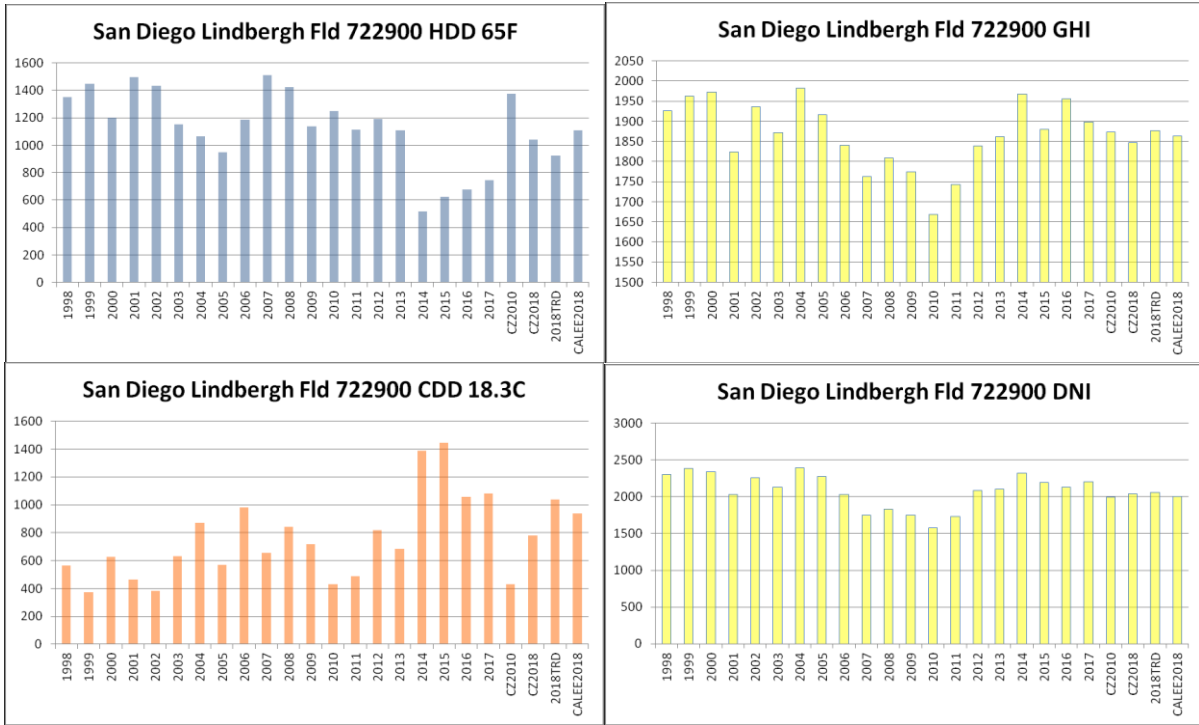


Figure 31. Climate Statistics for CTZ08 (Fullerton)

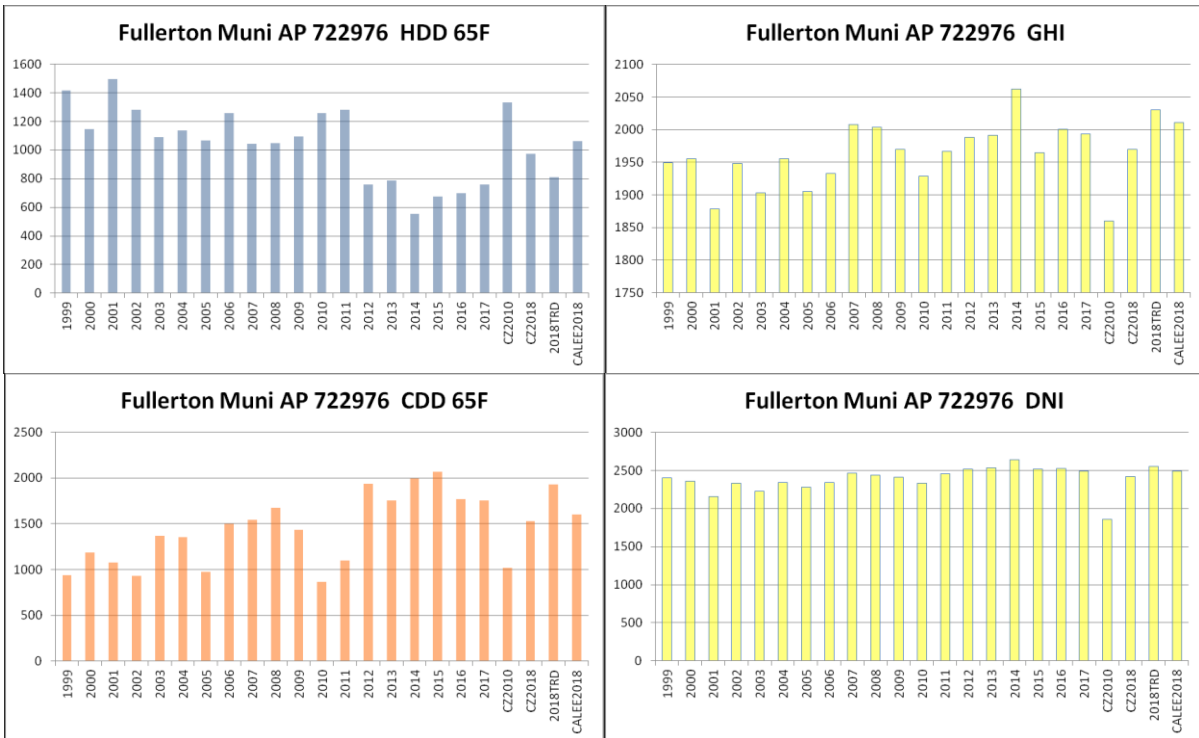


Figure 32. Climate Statistics for CTZ09 (Burbank-Glendale)

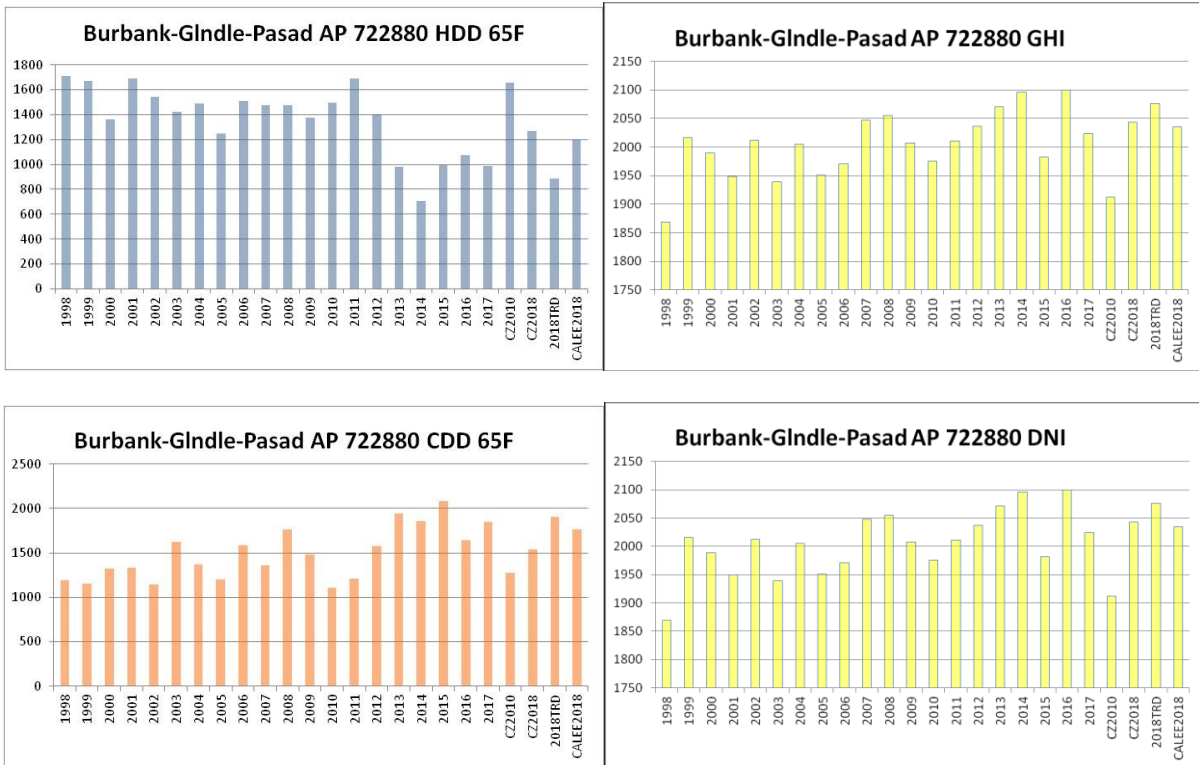


Figure 33. Climate Statistics for CTZ10 (Riverside)

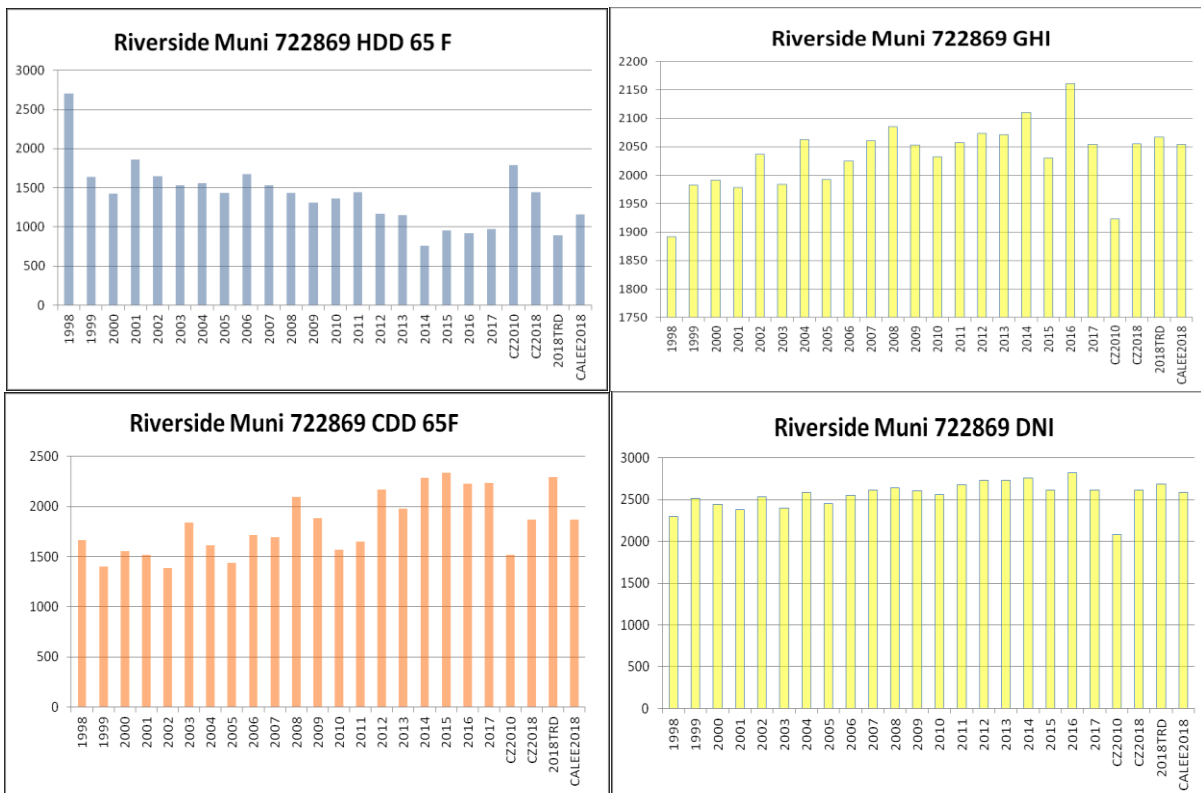


Figure 34. Climate Statistics for CTZ11 (Red Bluff)

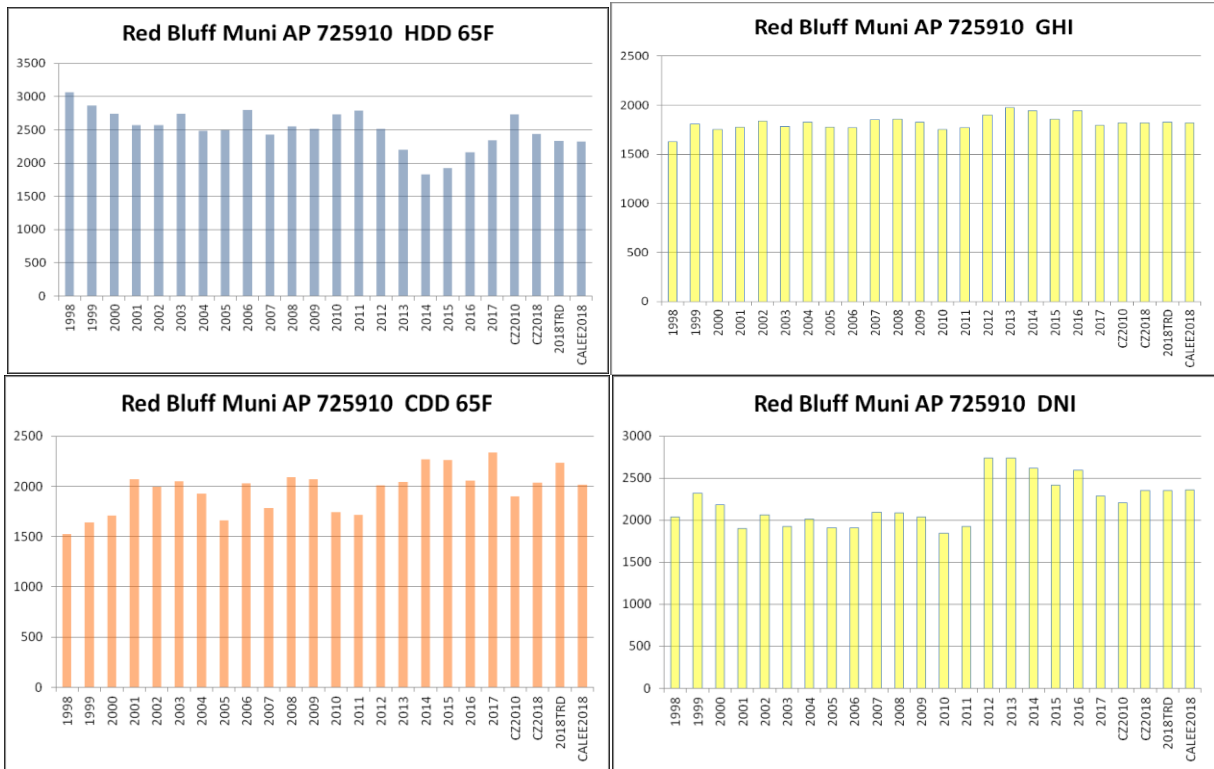


Figure 35. Climate Statistics for CTZ12 (Sacramento Executive AP)

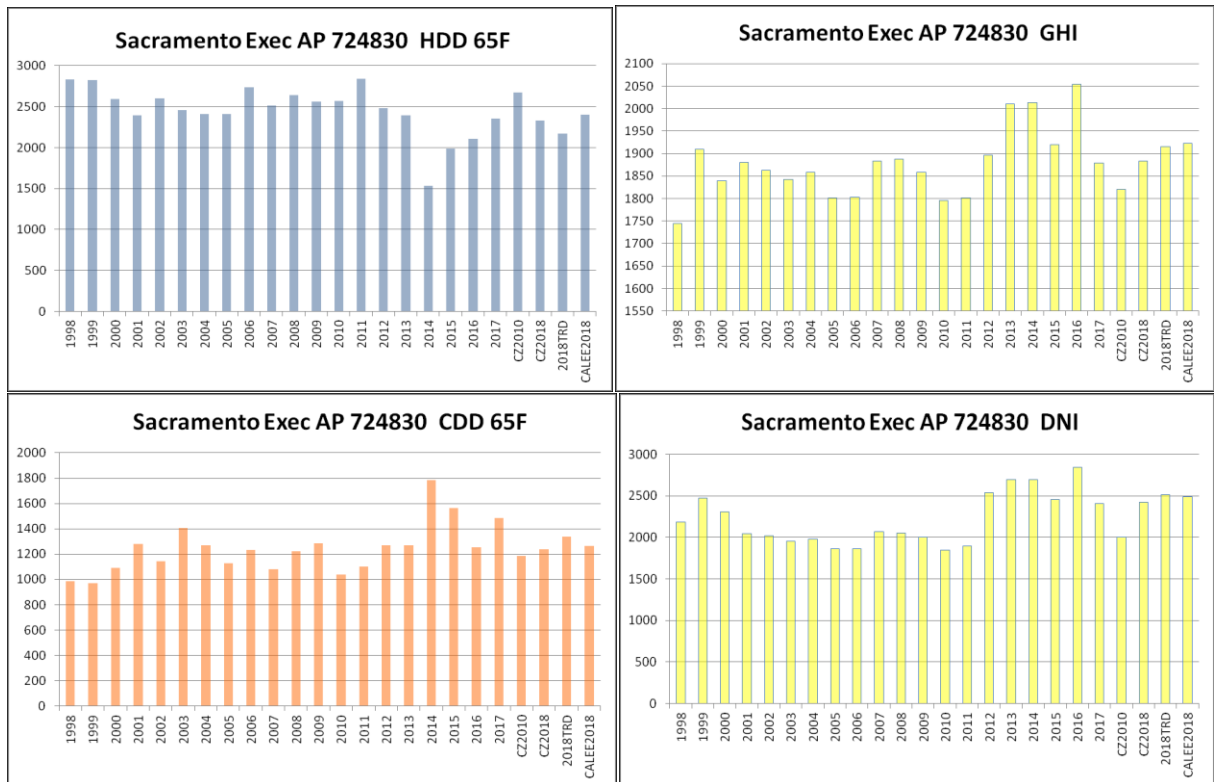


Figure 36. Climate Statistics for CTZ13 (Fresno)

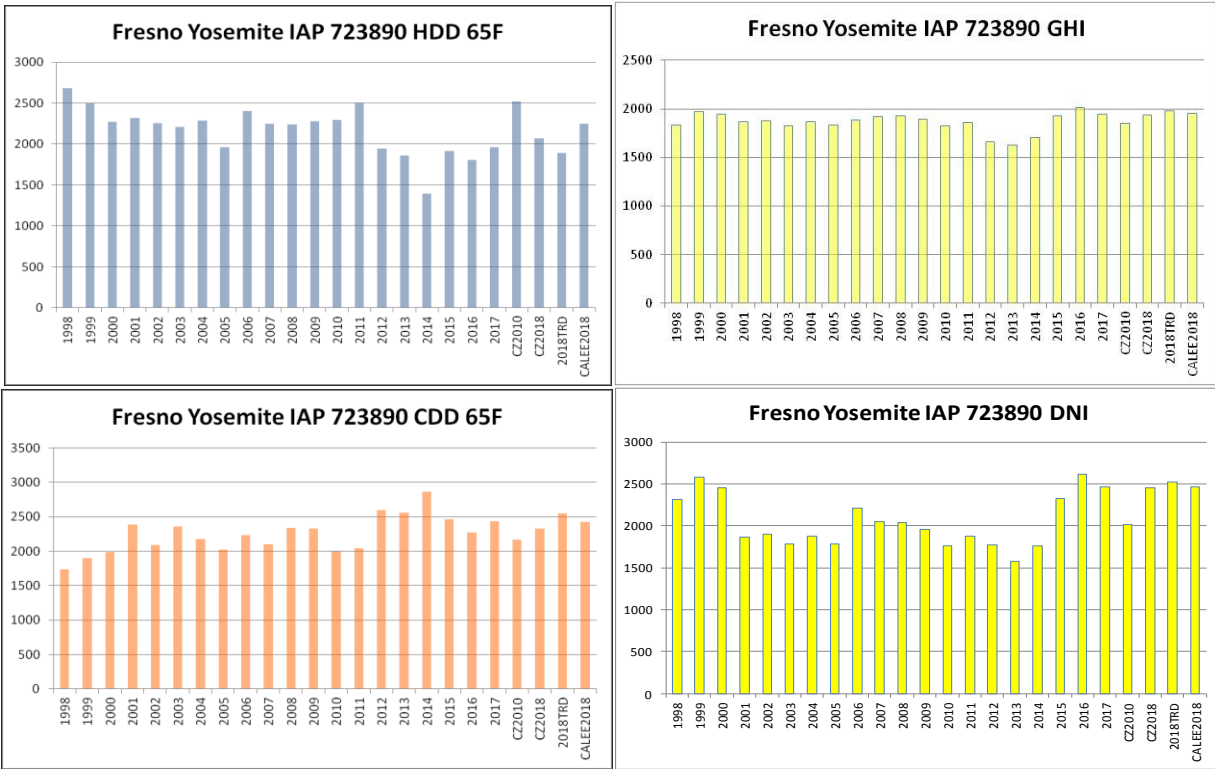


Figure 37. Climate Statistics for CTZ14 (Palmdale)

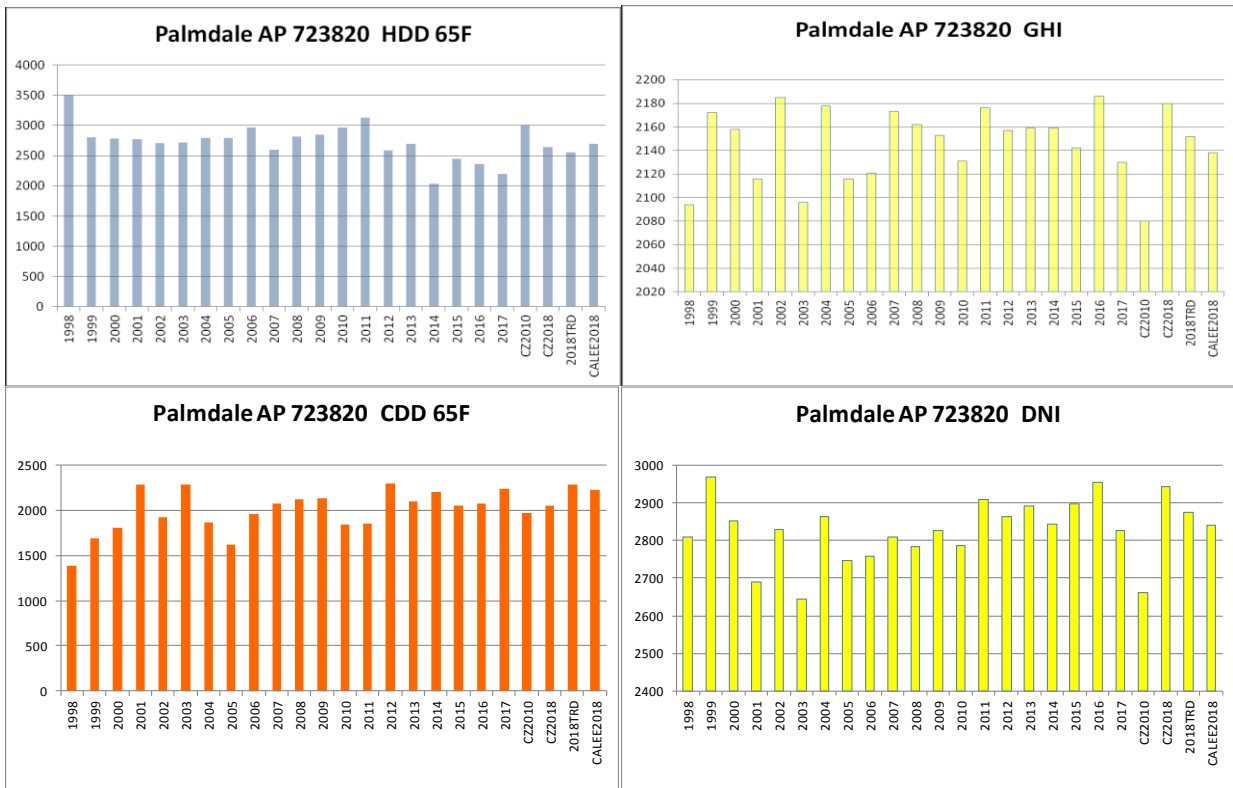


Figure 38. Climate Statistics for CTZ15 (Palm Springs Intl)

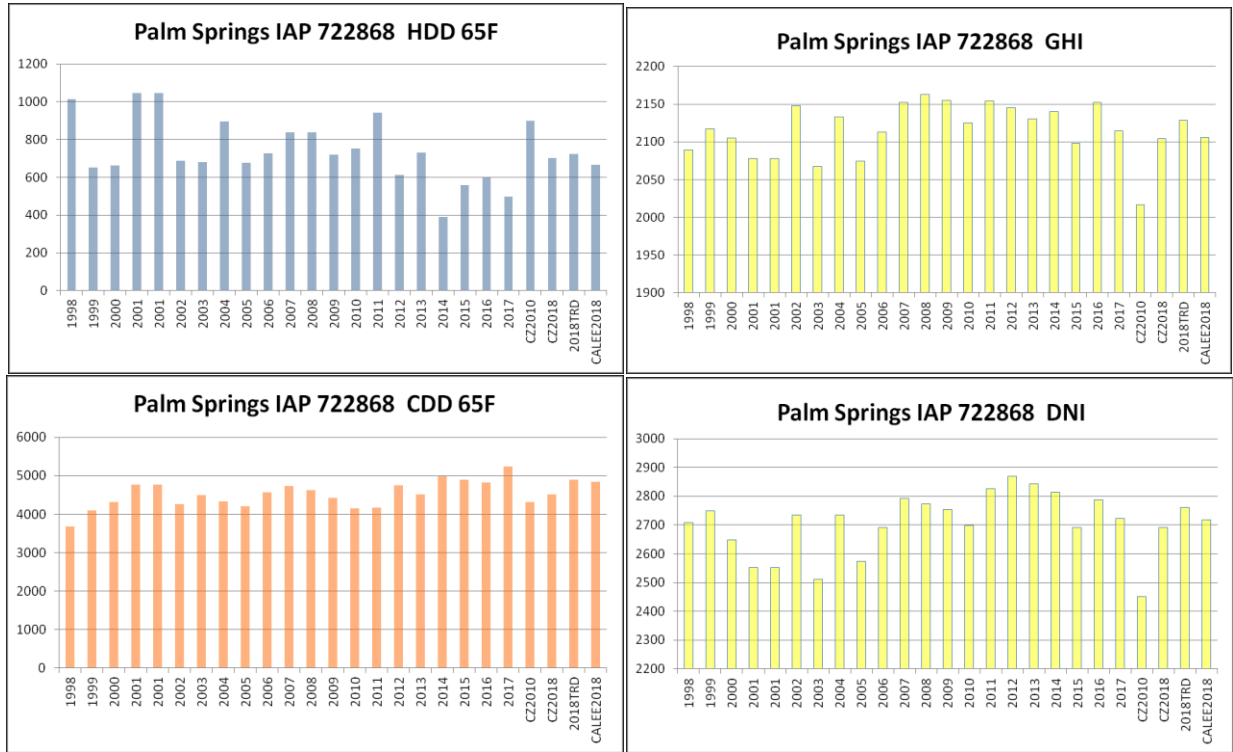
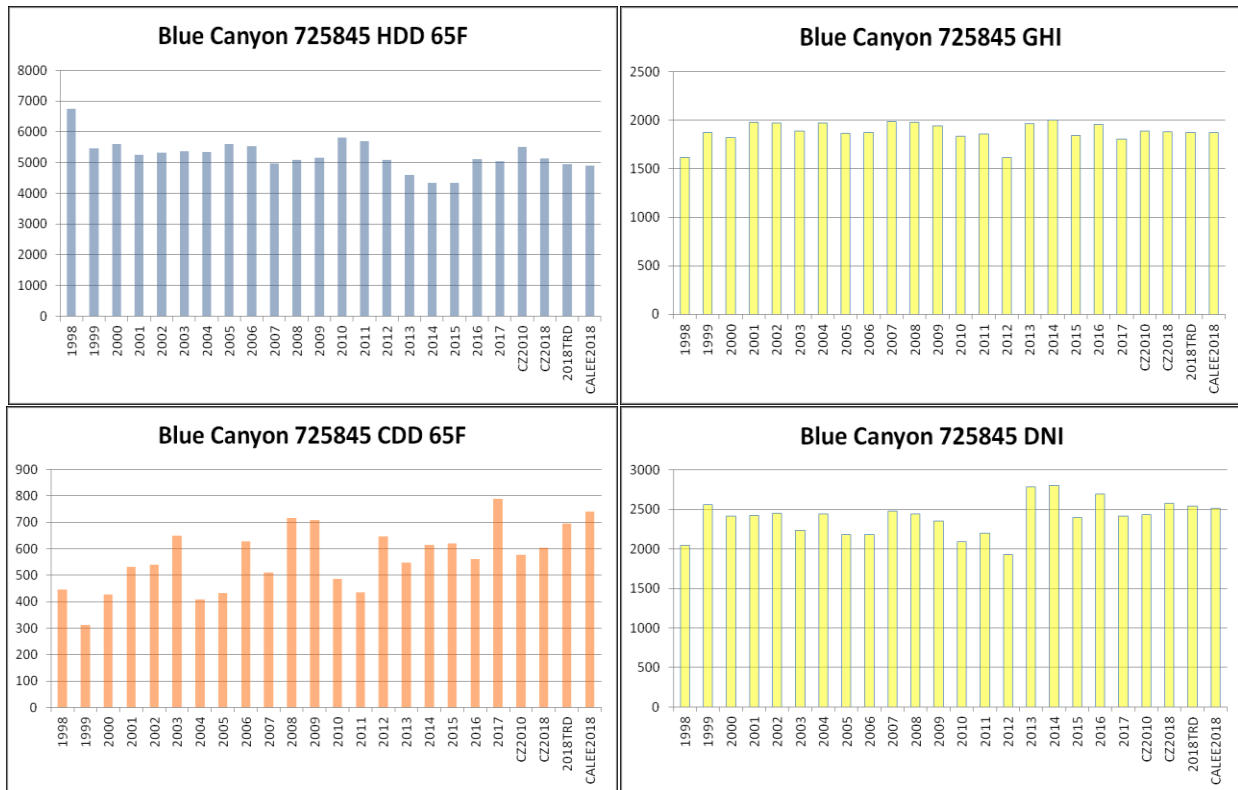


Figure 39. Climate Statistics for CTZ16 (Blue Canyon)



11. CONCLUSIONS

The plots in Figures 24-39 confirm that California did experience a warming spell over the last decade, with 2014 having a particularly warm winter, and both 2014 and 2015 having hot or lengthy summers. All 16 locations had the lowest number of Heating Degree Days in 2014, with the decrease particularly striking in coastal locations, such as Santa Maria (CTZ05) showing a reduction of more than 50% and Southern California locations (Torrance CTZ06, San Diego CTZ07, and Burbank CTZ09) showing reductions of 30-50%, but Northern California locations (Oakland CTZ03 and San Jose CTZ04) only 20-30%. Similarly, the spike in Cooling Degree Days in 2014 and 2015 was also most pronounced in coastal locations, doubling in Oakland, Torrance, and San Diego, and tripling in Santa Maria.

Whether 2014-2015 represented an isolated episode or a warming trend won't be known until another decade or two has passed but judging from the past 20 years of data for the inland climates like Riverside, Sacramento, or Fresno there does seem to be a general warming trend, even in the absence of a spike in 2014-2015 (see Palmdale CTZ14). This warming trend over the past two decades points to the need for frequent updates of the "typical year" weather files. In most California locations, the CZ2010 files are now turning into outlier years, with colder winters and milder summers than seen in the historical record for a decade or more. For example, the Heating Degree Days in the CZ2010s are higher than all 20 past years in San Jose, all but 1 year in Oakland and Fresno, all but 2 years in Fullerton, Burbank, and Riverside, and all but 3 years in Sacramento. The reverse with lower Cooling Degree Days is less clear-cut but can still be striking in coastal locations. For example, the CZ2010 for San Jose has fewer Cooling Degree Days than any of the past 20 years, all but 2 years in Oakland, all but 3 years in San Diego and Torrance, and all but 4 years in Burbank and Fullerton.

Comparing the CZ2010 to the new CZ2018, CZ2018TRD, and CALEE2018, the change in Degree Days with CZ2018 is often half that of the CZ2018TRD or CALEE2018. This is not surprising since the CZ2018 is based on the most recent 20 years, while the CALEE2018 is based on the most recent 12. Since the CZ2018 period of record (1998-2017) overlaps that of the CZ2010 (1998-2009), while that of the CALEE2018 is mostly subsequent to the CZ2010 (2006-2017), the CZ2018 is in effect an average of the two time periods. The CZ2018TRD is interesting because it also uses the same longer period of record (1998-2017), but instead of using the average of the period, it recognizes the trend within that period and applies that trend to the current year (2018). Compared to the CALEE2018, the CZ2018TRD can be either less or more aggressive. For example, in Burbank where the past five winters have been very mild, CALEE2018 had the same number of Cooling Degree Days (CDD) as the average of those years, while CZ2018TRD showed about a third more CDDs and is close to the CZ2018 because the previous 15 years were significantly colder with no obvious trend. On the other hand, in Blue Canyon in the mountains (CTZ16), the CZ2018TRD projects more CDDs than either CZ2018 or CALEE2018 because there was a constant warming trend through the past 20 years.

12. RECOMMENDATIONS

In terms of the reliability of the historical weather files produced by this project, they are much better than what could be developed 10-15 years ago. As for which formulation of "typical year" weather files are the best to use for projecting energy usage in the near future, this is unknowable until the future arrives. However, my personal opinion is that we should regard trends as reality-based evidence of changes in the weather, even if we're unclear about the exact causes of that change. It could be Global Climate Change, some localized warming, or a city-level Urban Heat Island effect. My recommendation is to use the more recent weather data, i.e., use the CZ2018 or CALEE2018 instead of the CZ2010s or TMY3s, and monitor how weather evolves to see whether trending gives a better estimate of future conditions.

13. REFERENCES

- Augustyn + Company 1992. "Climate Zone Weather Data Analysis and Revision Project", Consultant Report P400-92-004, California Energy Commission, Sacramento CA.
- Clean Power Research (CPR) 2019. <https://www.cleanpower.com>
- Clean Power Research (CPR) 2019b. <https://solaranywhere.com>
- Crow, Loren 1983. "Development of Hourly Data for Weather Year for Energy Calculations (WYEC), including solar data, for 24 stations throughout the United States and 5 stations in southern Canada", project report for RP 364, American Society of Heating, Refrigerating, and Air-Conditioning Engineers, Atlanta GA
- Dutton, S. 2006. personal communication.
- Erbs, D., S. Klein, and J. Duffie 1982. "Estimation of the diffuse radiation fraction for hourly, daily and monthly-average global radiation". *Solar Energy*. 1982;28(4):p. 293-302.
- Habte, A., M. Sengupta, and A. Lopez 2017. "Evaluation of the National Solar Radiation Database (NSRDB Version 2): 1998-2015", National Renewable Energy Laboratory, Golden Co. NREL/TP-5D00-67722
- Huang, Y.J. 2014. "Use of satellite-derived solar radiation in updating California Energy Commission's standard weather files", seminar presentation, ASHRAE annual conference, Montreal June 20-11.
- Huang, Y.J. 2011. "ASHRAE Research Project 1477-RP Development of 3,012 typical year weather files for international locations". Final Report, ASHRAE, Atlanta GA.
- Huang, Y.J. 2010. "Draft CTZ2 Weather Files for 87 California Locations". Interim report submitted to the Commission staff and Project Advisory Committee for California Energy Commission Project 500-07-033 .
- Iqbal, M. 1983. *An Introduction to Solar Radiation*. Pergamon Press, Toronto.
- Lott, N. and R. Baldwin 2001. "The FCC Integrated Surface Hourly Database, a New Resource of Global Climate Data", Technical Report, National Climatic Data Center, Asheville NC.
- Marion, W. and Urban, K. 1995. *User Manual for TMY2s - Typical Meteorological Years Derived from the 1961-1990 National Solar Radiation Data Base*, NREL/TP-463-7668, National Renewable Energy Laboratory, Golden CO.
- National Climatic Center (NCC) 1981. "Typical Meteorological Year user's manual TD-9374", National Climatic Center: Asheville NC.
- National Climatic Data Center (NCDC) 2003. "Data documentation for Data Set 3505 (DSI-3505), Integrated Surface Hourly Data", Asheville NC.
- National Renewable Energy Laboratory (NREL) 1995. "National Solar Radiation Data Base (1961-1990) Final Technical Report", NREL, Golden CO.
- National Centers for Environmental Information (NCEI) 2019. www.ncdc.noaa.gov/oa/climate/isd (accessed Jan. 2019)
- National Renewable Energy Laboratory (NREL) 2019a. <https://maps.nrel.gov/nsrdb-viewer>
- National Renewable Energy Laboratory (NREL) 2019b. https://rredc.nrel.gov/solar/old_data/nsrdb
- National Renewable Energy Laboratory (NREL) 1992. "National Solar Radiation Data Base User's manual (1961-1990). National Renewable Energy Laboratory, Golden CO. <https://rredc.nrel.gov/solar/pubs/NSRDB>
- Perez, R., P. Ineichen, K. Moore, M. Kmiecik, C. Chain, R. George, and F. Vignola 2002. "A new operational satellite-to-irradiance model – description and validation", *Solar Energy* 4/2002.
- Perez, R., Ineichen, P., Seals, R, Michalsky, J. and Stewart, R. 1990. "Modeling daylight availability and irradiance components from direct and global irradiance." *Solar Energy*, 44(5), pp. 271-289.
- Sandhurst 2009. equation described on Sandhurst Weather Royal County of Berkshire UK Web site <http://www.sandhurstweather.org.uk/barometric.pdf>

Seo, D.H., Huang, Y.J., and Krarti, M. 2009. "Evaluation of typical weather year selection approaches for energy analysis of buildings", ASHRAE Transactions , accepted for Summer 2009 meeting,

SolarGIS 2019. website: <https://solargis.com>

SolarGIS 2019b. website: <https://solargis.com/maps-and-gis-data/overview>

Su, F.X., Huang, Y.J., Xu, T.F., and Zhang, C.J. 2009. "An evaluation of the effects of various parameter weights on typical meteorological years used for building energy simulation", *Building Simulations*, 2:19-28., Tsinghua University Press, Beijing, China.

Thevenard, D. and Brunger, A. 2001. "ASHRAE Research Project 1015-RP typical weather years for international locations" . Final Report, ASHRAE, Atlanta GA.

Wilcox, S. 2012. "National Solar Radiation Database 1991-2010 Update: User's Manual". National Renewable Energy Laboratory, Golden CO. <https://rredc.nrel.gov/docs/fy12osti/54824.pdf>

Wilcox, S., and W. Marion 2008. "User's Manual for TMY3 Data Sets". National Renewable Energy Laboratory, Golden CO. <https://rredc.nrel.gov/docs/fy12osti/43156.pdf>

Zhang, Q.Y., Huang, Y.J., and Lang, S.W. 2002 "Development of typical year weather data for Chinese locations", LBNL-51436. ASHRAE Transactions, vol. 108, pt. 2, 2002 Annual Meeting, Honolulu HI.

APPENDIX. DESCRIPTION OF THE WEATHER FILES IN CSV FORMAT

To minimize the proliferation of different weather file formats, the TMY3 CSV format was used as the basis for this CSV file format. To maintain compatibility with the existing TMY3 format, no changes have been made to any of the TMY3 data elements, with any modifications inserted as additional data elements at the end of the lines. The following two paragraphs describes the changes in the header line and the data lines:

Differences between TMY3 and this CSV data header (Line 1): The Site Identifier Code (field no. 1) has been changed from the USAF number to the WMO number and the Station Name (field no. 2) from quote delimited to without quotes. Following the seven TMY3 fields, additional fields have been added giving the Station Country, WMO Region, Time Zone, Time Zone Code, and Köppen Climate Region of the station. The Station State (field no. 3) is left blank. The differences from the TMY3 CSV format are shown in italics.

Differences between TMY3 and this CSV format data fields (Lines 3-8762): An additional data element has been added at the end of each data line for Present Weather. The data elements for Aerosol Optical Depth (field nos. 60-62) and Albedo (field nos. 63-64) have been left blank. The data for liquid precipitation (field no. 65) is given in 0.1 mm, instead of 1 mm.

The CSV files have two file header lines and 8,760 lines of data, each with 69 data fields. The format is documented in Tables A-1 through A-6.

Table A-1. CSV data header (line 1)

Field	Element	Unit or Description
1	Site identifier code	6-digit official WMO number for station
2	Station name	Name based on ISH station list with non-alphanumeric characters deleted and spaces substituted by hyphens (max 25 characters), no quotes.
3	Station state	<i>blank</i>
4	Site time zone	Hours from Greenwich, negative west
5	Site latitude	Decimal degree
6	Site longitude	Decimal degree
7	Site elevation	Meter
8	<i>Station country or political unit</i>	<i>3-character code according to ISO 3166</i>
9	<i>Time zone</i>	<i>Number of decimal hours by which local standard time is ahead of or behind Universal Time (+ if ahead, - if behind)</i>
10	<i>Time zone code</i>	<i>3-character code</i>
11	<i>Köppen climate zone</i>	<i>3-character Köppen climate region based on Kottek et al. 2006</i>

Table A-2. CSV data header (line 2)

Field	Element
1-69	Data field name and units (abbreviation or mnemonic)

Table A-3. CSV data fields (lines 3-8762 or 3-8786 for leap years)

Field	Element	Unit or Range	Resolution	Description
1	Date	MM/DD/YYYY		Date of data record
2	Time	HH:MM		Time of data record (local standard time)
3	Hourly extraterrestrial radiation on a horizontal surface	Watt-hour per square meter	1 Wh/m ²	Amount of solar radiation received on a horizontal surface at the top of the atmosphere during the 60-minute period ending at the timestamp
4	Hourly extraterrestrial radiation normal to the sun	Watt-hour per square meter	1 Wh/m ²	Amount of solar radiation received on a surface normal to the sun at the top of the atmosphere during the 60-minute period ending at the timestamp
5	Global horizontal irradiance	Watt-hour per square meter	1 Wh/m ²	Total amount of direct and diffuse solar radiation received on a horizontal surface during the 60-minute period ending at the timestamp
6	Global horizontal irradiance source flag			See Table A-4
7	Global horizontal irradiance uncertainty	Percent	1%	Uncertainty based on random and bias error estimates compared to measured data for subset of stations
8	Direct normal irradiance	Watt-hour per square meter	1 Wh/m ²	Amount of solar radiation (modeled or satellite-derived) received in a collimated beam on a surface normal to the sun during the 60-minute period ending at the timestamp
9	Direct normal irradiance source flag			See Table A-4
10	Direct normal irradiance uncertainty	Percent	1%	Uncertainty based on random and bias error estimates compared to measured data for subset of stations
11	Diffuse horizontal irradiance	Watt-hour per square meter	1 Wh/m ²	Amount of solar radiation received from the sky (excluding the solar disk) on a horizontal surface during the 60-minute period ending at the timestamp
12	Diffuse horizontal irradiance source flag			See Table A-4
13	Diffuse horizontal irradiance uncertainty	Percent	1%	Uncertainty based on random and bias error estimates compared to measured data for subset of stations
14	Global horizontal illuminance	Lux	100 lx	Average total amount of direct and diffuse illuminance received on a horizontal surface during the 60-minute period ending at the timestamp
15	Global horizontal illuminance source flag			See Table A-4
16	Global horizontal illuminance uncertainty	Percent	1%	Uncertainty based on random and bias error estimates
17	Direct normal illuminance	Lux	100 lx	Average amount of direct normal illuminance received within a 5.7° field of view centered on the sun during 60-minute period ending at the timestamp
18	Direct normal illuminance source flag			See Table A-4
19	Direct normal illuminance uncertainty	Percent	1%	Uncertainty based on random and bias error estimates

20	Diffuse horizontal illuminance	Lux	100 lx	Average amount of illuminance received from the sky (excluding the solar disk) on a horizontal surface during the 60-minute period ending at the timestamp
21	Diffuse horizontal illuminance source flag			See Table A-4
22	Diffuse horizontal illuminance uncertainty	Percent	1%	Uncertainty based on random and bias error estimates
23	Zenith luminance	Candela per square meter	10 cd/m ²	Average amount of luminance at the sky's zenith during the 60-minute period ending at the timestamp
24	Zenith luminance source flag			See Table A-4
25	Zenith luminance uncertainty	Percent	1%	Uncertainty based on random and bias error estimates.
26	Total sky cover	Tenths of sky	1 tenth	Amount of sky dome covered by clouds or obscuring phenomena at the time indicated
27	Total sky cover flag (source)			See Table A-5
28	Total sky cover flag (uncertainty)			See Table A-6
29	Opaque sky cover	Tenths of sky	1 tenth	Amount of sky dome covered by clouds or obscuring phenomena that prevent observing the sky or higher cloud layers at the time indicated
30	Opaque sky cover flag (source)			See Table A-5
31	Opaque sky cover flag (uncertainty)			See Table A-6
32	Dry-bulb temperature	Degree C	0.1°	Dry-bulb temperature at the time indicated
33	Dry-bulb temperature flag (source)			See Table A-5
34	Dry-bulb temperature flag (uncertainty)			See Table A-6
35	Dew point temperature	Degree C	0.1°	Dew point temperature at the time indicated
36	Dew point temperature flag (source)			See Table A-5
37	Dew point temperature flag (uncertainty)			See Table A-6
38	Relative humidity	Percent	1%	Relative humidity at the time indicated
39	Relative humidity flag (source)			See Table A-5
40	Relative humidity flag (uncertainty)			See Table A-6
41	Station pressure	Millibar	1 mbar	Station pressure at the time indicated
42	Station pressure flag (source)			See Table A-5
43	Station pressure flag (uncertainty)			See Table A-6
44	Wind direction	Degrees from north (360° = north; 0° = undefined, calm)	10°	Wind direction at the time indicated
45	Wind direction flag (source)			See Table A-5

46	Wind direction flag (uncertainty)			See Table A-6
47	Wind speed	Meter/second	0.1 m/s	Wind speed at the time indicated
48	Wind speed flag (source)			See Table A-5
49	Wind speed flag (uncertainty)			See Table A-6
50	Horizontal visibility	Meter*	1 m	Distance to discernable remote objects at the time indicated (77777 = unlimited, not used)
51	Horizontal visibility flag (source)			See Table A-5
52	Horizontal visibility flag (uncertainty)			
53	Ceiling height	Meter*	1 m	Height of the cloud base above local terrain (7777 = unlimited)
54	Ceiling height flag (source)			See Table A-5
55	Ceiling height flag (uncertainty)			See Table A-6
56	Precipitable water	Centimeter	0.1 cm	The total precipitable water contained in a column of unit cross section extending from the earth's surface to the top of the atmosphere
57	Precipitable water flag (source)			See Table A-5
58	Precipitable water flag (uncertainty)			See Table A-6
59	Aerosol optical depth, broadband	[unitless]	0.001	The broadband aerosol optical depth per unit of air mass due to extinction by the aerosol component of the atmosphere (<i>left blank</i>)
60	Aerosol optical depth, broadband flag (source)			See Table A-5 (<i>left blank</i>)
61	Aerosol optical depth, broadband flag (uncertainty)			See Table A-6 (<i>left blank</i>)
62	Albedo	[unitless]	0.01	The ratio of reflected solar irradiance to global horizontal irradiance (<i>left blank</i>)
63	Albedo flag (source)			See Table A-5 (<i>left blank</i>)
64	Albedo flag (uncertainty)			See Table A-6 (<i>left blank</i>)
65	Liquid precipitation depth	Millimeter*	0.1 mm	The amount of liquid precipitation over the hour, interpolated from observed recordings indicating depth and time period for recording (multiple recordings possible for time periods up to 24 hours).
66	Liquid precipitation quantity	Hour*	1 hr	The period of accumulation for the liquid precipitation depth field (<i>always 1 hr</i>)
67	Liquid precipitation depth flag (source)			See Table A-5
68	Liquid precipitation depth flag (uncertainty)			See Table A-6
69	Present Weather			Present weather conditions denoted by 2-digit METAR code number

* Value of -9900 indicates the measurement is missing.

Table A-4. Solar radiation and illuminance source flags

Flag	Definition
A*	Post-1976 measured solar radiation data as received from NCDC or other sources
B*	Same as "A" except the global horizontal data underwent a calibration correction
C*	Pre-1976 measured global horizontal data (direct and diffuse were not measured before 1976), adjusted from solar to local time, usually with a calibration correction
D*	Data derived from the other two elements of solar radiation using the relationship, global = diffuse + direct x cosine(zenith)
E*	Modeled solar radiation data using inputs of <i>observed</i> sky cover (cloud amount) and aerosol optical depths derived from direct normal data collected at the same location
F*	Modeled solar radiation data using <i>interpolated</i> sky cover and aerosol optical depths derived from direct normal data collected at the same location
G	Modeled solar radiation data using <i>observed</i> sky cover, temperature change over the past three hours, relative humidity, and wind speed
H	Modeled solar radiation data using <i>interpolated</i> sky cover and estimated aerosol optical depth
I	Modeled illuminance or luminance data derived from measured or modeled solar radiation data
?	Source does not fit any of the above categories. Used for nighttime values and missing data

*Flags A through F and H are not used but included here for consistency and completeness.

Table A-5. Meteorological source flags

Flag	Definition
A	Data as received from NCDC, converted to SI units
B	Linearly interpolated
C	<i>Non-linearly interpolated using Fourier Series for daytime hours and sine curve approximation for nighttime hours, done only for dry-bulb temperatures</i>
D	<i>Step function repeating last available value for the first half of missing hours, and the next available value for the second half of missing hours, done for wind direction, present weather, and visibility when one of the values is unlimited (77777)</i>
E	Modeled or estimated, except relative humidity calculated from dry-bulb temperature and dew point temperature
F	Precipitable water, calculated from dew point temperature using Muneer Equation
G	<i>Data smoothed between the fourth hour before the end of a month and the fourth hour at the beginning of the following month, done only when adjoining months are from different historical years</i>
?	Source does not fit any of the above. Used mostly for missing data by repeating last observed data condition.

Table A-6. Meteorological uncertainty flags

Flag	Definition
1-6	Not used
7	Uncertainty consistent with NWS practices and the instrument or observation used to obtain the data
8	Greater uncertainty than 7 because values were interpolated or estimated
9	Greater uncertainty than 8 or unknown
0	Not definable